

Super Manifold

A new era of water control

REGAL JOINT CO., LTD.
1-9-49 Onodai Minami-ku Sagami-hara-shi
Kanagawa Japan 252 0331
Tel: +81-42 756 7411 Fax: +81-42 752 2004
URL: <http://www.rgl.co.jp>



With the diversification of the process, cooling water line branch a lot. Manifold new appearance that can correspond to the cooling water line of multi-system.



(Reference photograph)

POINT 1 A large bore



Main pipe 1 inch. I will be available to the cooling water line of a multi-branch system.

POINT 2 Up to 10 consolidated

Improved structure for connecting the manifold block. This product, you can concatenate the manifold block of up to 10.

POINT 3 Free flow path design



The use of the seal ring / seal disk and various adapter, you can design a variety of flow paths.

A rich variation of water control equipment

POINT 4 Compatibility



Through pipe

I passed through the fluid to the straight. I can be used as a dummy of the sensor.

Stop plug

Do not empty the fluid in the flow path.

Ball valve

It can open and close the flow path, the fluid can be adjusted.



Solenoid valve

Air cylinder valve



Impeller flowmeter Series

FS-S / FS-AR
FS-N / FS-C

Karman vortex flowmeter Series

KSL 5L/30L

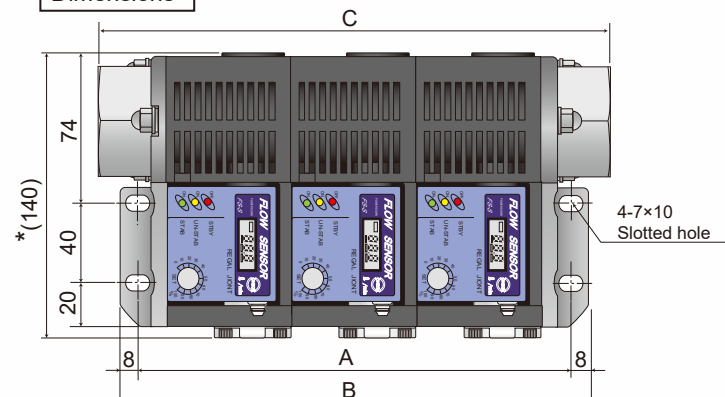
Solenoid valve

RSV

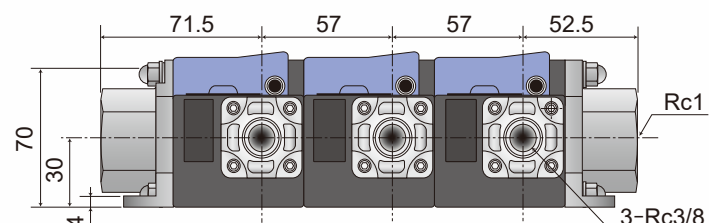
Specification

Applicable fluid	Industrial water, water
Max. operating pressure	0.97MPa
Fluid temperature	0-60°C (No freezing)
Pipe diameter	Rc 1" (Mother tube)
Material of liquid contacting par	Stainless steel / PPS / nylon
Number of stations	10 stations 1 station to a maximum of minimum

Dimensions

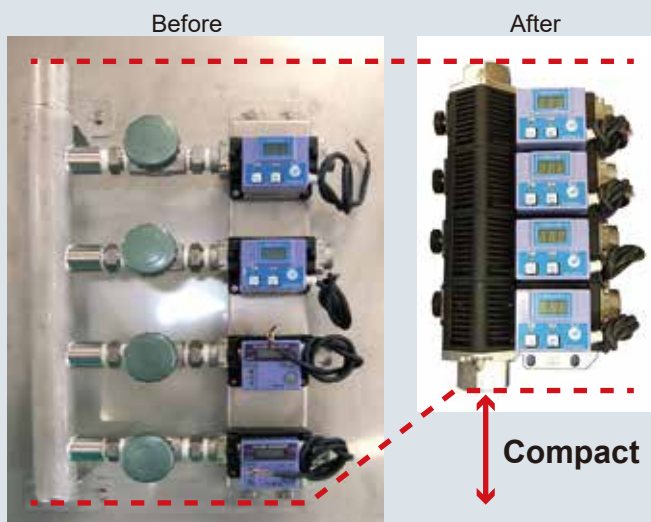


* Dimensions of the value depends on the type of adapter.
A=27+(57×n) B=43+(57×n) C=67+(57×n)
n=Number of stations



* Please note that for performance improvement, that it may be subject to change without notice the shape and specifications.

Achieve a compact piping without welding



- Footprint by pipeless
- Reducing design arrangement man hours
- Reducing air leakage