

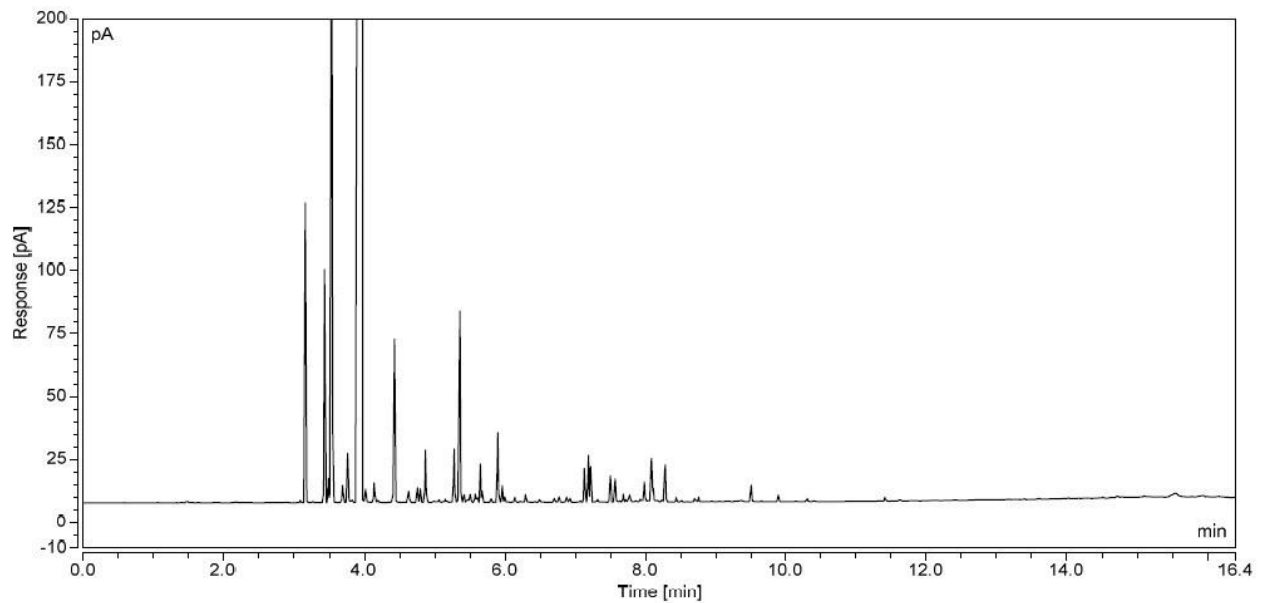
Orange Sweet Essential Oil

GCMS ANALYSIS REPORT

1. INJECTION DETAILS

Sample ID	40850-1021262-19812-S2
Sample Name	Orange (Sweet) Essential Oil
Column	Silicone-DB1
Carrier Gas	Hydrogen
Injection Date/Time	24/Mar/23 15:41

2. CHROMATOGRAM



3. PEAK RESULTS

No.	Retention Time (min)	Area (pA*min)	GC Area (%)	Peak Name
1	3.161	1.746	0.51	Alpha-pinene
2	3.434	1.404	0.41	Sabinene
3	3.489	0.149	0.04	Beta-pinene
4	3.534	6.827	1.98	3-Octanal + Myrcene
5	3.69	0.127	0.04	Alpha-phellandrene
6	3.763	0.346	0.1	Delta-3-carene
7	3.821	0.022	0.01	Alpha-terpinene
8	3.961	327.407	94.79	Limonene
9	4.018	0.075	0.02	Trans-beta-ocimene
10	4.139	0.144	0.04	Gamma-terpinene
12	4.431	1.123	0.33	Nonanal + Terpinolene + Linalool
14	4.758	0.11	0.03	Cis-limonene oxide
15	4.798	0.085	0.02	Trans-limonene oxide
16	4.869	0.317	0.09	Citronellal
18	5.278	0.343	0.1	Alpha-terpineol
19	5.359	1.22	0.35	Decanal (aka Aldehyde C10)
21	5.502	0.045	0.01	Cis-carveol
22	5.578	0.085	0.02	Citronellol + Nerol
23	5.608	0.025	0.01	Trans-carveol
24	5.65	0.246	0.07	Neral
25	5.676	0.074	0.02	Carvone
26	5.808	0.025	0.01	Geraniol

27	5.899	0.449	0.13	Geranial
28	5.964	0.108	0.03	Perillaldehyde
39	7.189	0.292	0.08	Dodecanal
48	8.088	0.325	0.09	Valencene
55	9.507	0.11	0.03	Beta-sinensal
56	9.893	0.046	0.01	Alpha-sinensal
57	10.306	0.021	0.01	Nootkatone
		343.296	99.38	