

# KIWAYA

since 1919

## UKULELE CATALOG 2024

*for your  
colorful life*

### INDEX

About KIWAYA	P 02-03
Eco Series	P 04-07
Strummer Series	P 08-09
Artist Series	P 10-12
Student Model	P 13
Shop Information	P 14-15





## About KIWAYA



**KIWAYA**  
UKULELES  
SINCE 1919

**For your colorful life.**  
Quality of Made in Japan, as your lifetime partner.

"Ukulele" is a handy size instrument with pleasant tone.  
This lovely instrument has been fascinating players,  
but it was like an endangered species back in the old days.

Japan in the mid 50's.  
Beginning of the Rock music era turned over the Hawaiian boom.  
Over 30 companies were forced to withdraw from the ukulele business.

**"We must leave this wonderful instrument for posterity."**

In 1955, KIWAYA's first brand "Famous" was born.  
Wished to be played by many people.  
Ukulele is an instrument that brings us "happiness",  
"enjoyable" and "relaxation" feelings,  
like a lifetime partner that colors your life.

Therefore, KIWAYA sticks on "Made in Japan" quality.  
To offer ukuleles that is "easy to play", and with reliable quality.  
With our long time knowledge and experience of manufacturing ukuleles,  
we wish to be your partner for your colorful life.

## About KIWAYA



**Made in Japan, by KIWAYA.**  
**We offer high playability ukulele, with reliable quality.**

### Eco Series

Known as the brand name called "Famous" in Japan. For more than half a century, this long seller brand has been improving the playability, tone, and structure. From ukulele beginners to lovers, Eco Series has been used by many players around the world.

### Strummer Series

The Strummer Series was first introduced as KIWAYA's overseas brand. We focused on supporting a variety of play styles for recent ukulele players. Since the domestic sales in 2015, it became one of our typical brand.

### Artist Series

"Luna" the popular domestic brand in 1950's was handed over to KIWAYA in 1993, and reprinted as a modern vintage ukulele. Slim neck, light body, and with comfortable sustain reminds the style and the sound of traditional ukulele.



**One by one, with our hand.**  
**For your best partner.**

Thinking about our ukuleles to be your best partner, KIWAYA's quality check has been done "one by one" with our own hands. There are more than 30 checklist items, and ukuleles that has passed this check will be brought to your hands.



# The "Eco Series"

## The best selling brand in Japan.

The "Eco Series" known as "Famous"(in Japan) is KIWAYA's oldest company brand since 1955. We use materials that are managed or made in Japan, and manufactured at the factory in our country.

"Layered tonewood" is used on the body. (Triple layered on top and back, double layered on side) From our long history, knowledge, and development, the character of the body (volume and the tone) are made in good balance. And that makes our Eco Series different from other ukuleles with same price range.

## 3 comitted points of the Eco Series

### 1 Playability

For ballanced string action that everyone would feel easy to play.  
The neck shape and thickness, adjustment of the nut and saddle are checked carefully.

### 2 Tone

Round back body with our long time knowledge is also a proof of "Made in Japan" product.  
"Light tension strings" are set up for warm tone, with optimal vibration through the body.

### 3 Triple layered structure

This structure has been adopt continuously, since the birth in 1955. Due to the "strength" of layered wood and the "thickness" not inferior to solid wood, both quality and cost performance are achieved.



#### Eco Series Common specification

Body: Triple Layered  
Neck: Mahogany  
Bridge: Walnut  
Nut/Saddle: ABS Resin  
Strings: KIWAYA KFC  
(Clear Fluoro Carbon)  
Made in Japan



#### Soprano size

Length : 545mm  
Scale : 350mm  
Nut width : 35mm

Two models representing the ECO Series, that walked together the Japanese ukulele culture.

#### Top seller!!

Loud volume with crispy tone.  
KIWAYA's standard Hawaiian Koa model.

### KS-5G

Body : Hawaiian Koa  
Frets : 12f/15f  
Fingerboard : Rosewood  
Gotoh Geared tuner



Trial movie



#### No.2 seller!!

Standard Mahogany model with good cost performance.  
Clear sound with sustain.

### KS-1G

Body : Mahogany  
Frets : 12f/15f  
Fingerboard : Walnut  
Gotoh Geared tuner



Trial movie







Pinapple body shape with  
Hawaiian Koa.

**KS-4PG**

Body : Hawaiian Koa  
Frets : 12f/15f  
Fingerboard : Rosewood  
Gotoh Geared tuner



**KS-S10/BL**

Body : Satinwood  
Frets : 12f/15f  
Fingerboard : Pau Ferro  
Bridge : Pau Ferro  
Gotoh Geared tuner



**KS-S10/BK**

Body : Satinwood  
Frets : 12f/15f  
Fingerboard : Pau Ferro  
Bridge : Pau Ferro  
Gotoh Geared tuner



**KS-5**

Body : Hawaiian Koa  
Frets : 12f/15f  
Fingerboard : Rosewood  
Gotoh Friction tuner



**KS-1**

Body : Mahogany  
Frets : 12f/15f  
Fingerboard : Walnut  
Gotoh Friction tuner

Soprano  
Extended  
neck  
Length : 580mm  
Scale : 380mm  
Nut width : 35mm

Soprano body with Concert scale neck. It provides correct pitch and higher tention compared to soprano scale ukulele. If you like the sound of soprano ukulele but willing to learn more technical skills, this is the one.



Warm and clear sound with  
quality Hawaiian Koa.

**KLS-2G**

Body : Hawaiian Koa  
Frets : 14f/20f  
Fingerboard : Rosewood  
Gotoh Geared tuner



Reasonable price  
extended neck soprano.

**KLS-3G**

Body : Mahogany  
Frets : 14f/17f  
Fingerboard : Walnut  
Gotoh Geared tuner

Concert  
size  
Length : 615mm  
Scale : 380mm  
Nut width : 35mm

Concert size ukulele sounds more powerful on low range. For "solo players" or "high fret position strummers".



Mild tone with good volume.

**KC-1G**

Body : Mahogany  
Frets : 14f/17f  
Fingerboard : Walnut  
Gotoh Geared tuner



Crispy and ringing tone.

**KC-5G**

Body : Hawaiian Koa  
Frets : 14f/17f  
Fingerboard : Walnut  
Gotoh Geared tuner



# The "Strummer Series"

Strummer series, the latest modern design ukulele of KIWAYA first started as an export model. Compatible with various playing styles. And has been highly praised by many ukulele players around the world.

"Large original fret wire" and "D-shape neck" is for good gripping and finger control of your left hand. Wide, shallow body produces quick response with comfortable sustain.



## 3 comitted points of the Strummer Series

### 1 Pursuing the strum

Designed for smooth strumming experience with exquisitely thick neck grip, and slightly thin body. Original jumbo-frets are adopted for clear sound and sustainability.

### 2 Powerful sound

Selected tonewoods are used for this slim body, and its maximized vibration brings out the volume than you imagine. Original fluorocarbon strings "K BM" (joint development with Worth Strings) are set up to give you even more powerful sound.

### 3 Pursuit of perfection through division of labor

Pursuing a high degree of perfection through a unique method of dividing the production process. Each professional has taken advantage of their unique characteristics to achieve total weight balance, ease of holding, and comfortable playing experience.



Strummer Series  
Common specification

Body : All Solid  
Neck : African Mahogany  
Nut & Saddle : Bone  
Fingerboard & Bridge : Rosewood  
(Tenor:Ebony)  
Strings : KIWAYA K BM  
(Brown Fluoro Carbon)  
Strap pin installed  
Gloss Finish  
Made in Japan

Strummer  
Series



#### Hawaiian Koa Model

Clear and crispy ringing tone.

KPS-1K	Size : Soprano Frets : 14f/17f Length : 560mm Scale : 345mm Nut width : 37mm
KPC-1K	Size : Concert Frets : 14f/18f Length : 615mm Scale : 380mm Nut width : 37mm
KPT-1K/E	Size : Tenor Frets : 14f/18f Length : 690mm Scale : 430mm Nut width : 37mm



#### Mahogany Model

Strong low end sound with volume.

KPS-1M	Size : Soprano Frets : 14f/17f Length : 560mm Scale : 345mm Nut width : 37mm
KPC-1M	Size : Concert Frets : 14f/18f Length : 615mm Scale : 380mm Nut width : 37mm
KPT-1M/E	Size : Tenor Frets : 14f/18f Length : 690mm Scale : 430mm Nut width : 37mm

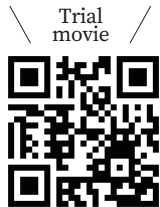


Limited!!

## Master Grade Hawaiian Koa Model

Made by selected Master grade Hawaiian Koa.

KPS-5K/E	Size : Soprano   Frets : 14f/17f Length : 560mm   Scale : 345mm   Nut width : 37mm
KPC-5K/E	Size : Concert   Frets : 14f/18f Length : 615mm   Scale : 380mm   Nut width : 37mm
KPT-5K/E	Size : Tenor   Frets : 14f/18f Length : 690mm   Scale : 430mm   Nut width : 37mm



Master Grade Hawaiian Koa Model  
Common specification

Body : Master Grade Hawaiian Koa  
Fingerboard & Bridge : Ebony  
Binding : Curly Maple  
Head Plate : Hawaiian Koa  
Tuner : Gotoh UPT Planetary  
with Case  
Made in Japan





# The "Artist Series"

"Light as a feather". It was a recommendation that someone spoke when this series was sold outside Japan. "Luna" ukulele, the domestic brand of this Artist Series was a well known brand back in 50's during the Hawaiian boom. Reborn in 2003, as a high quality vintage style ukulele.

Once you start playing, you can feel how wonderful this ukulele sounds. And how really fun to strum.

## 3 comitted points of the Artist Series

### 1 Precisely calculated structure

Manufactured by a small team of skilled craftsmen with extensive experience. Designed and manufactured with careful attention to the internal structure and details to maximize the original sound of the tonewood.

### 2 Weight balance

Not only light, but also has a weight balance that makes it easy to hold. Slim body, matching with the slightly thin neck shape and low string height set up, offers you an unstressful playability.

### 3 The sound

Retaining the ukulele sound of the good old days, the crispness and core of the sound create a pleasant reverberation. Based on this, we design the sound for each model by taking advantage of the characteristics of the tonewood.



Artist Series Common specification

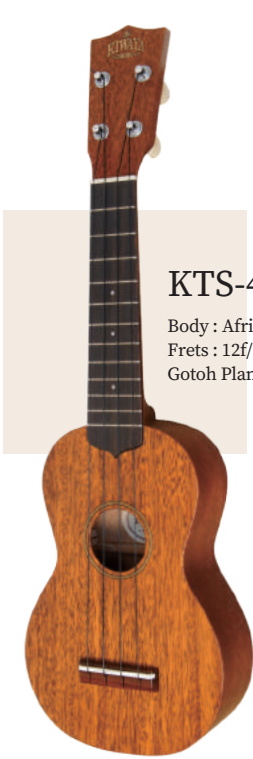
Body : All Solid  
Neck : African Mahogany  
Nut & Saddle : Bone  
Fingerboard : Rosewood  
Bridge : Pau Ferro  
Strings : KIWAYA KFC  
(Clear Fluoro Carbon)  
Satin Finish  
Made in Japan

Artist Series



### Soprano size

Length : 530mm  
Scale : 350mm  
Nut width : 36mm



KTS-4

Body : African Mahogany  
Frets : 12f/12f  
Gotoh Planetary tuner



KTS-5

Body : African Mahogany  
Frets : 12f/17f  
Gotoh Planetary tuner



KTS-7

Body : Honduras Mahogany  
Frets : 12f/17f  
Gotoh Planetary tuner

### Concert size



KTC-1

Body : African Mahogany  
Frets : 12f/12f  
Gotoh Planetary tuner  
Length : 590mm  
Scale : 385mm  
Nut width : 36mm



KTC-2

Body : African Mahogany  
Frets : 14f/19f  
Gotoh Planetary tuner  
Length : 610mm  
Scale : 385mm  
Nut width : 36mm



KIWAYA Artist Series
*Made in Japan*

Tenor size

Length : 680mm  
Scale : 435mm  
Nut width : 36mm



KTT-2S

Body : African Mahogany  
Frets : 14f/19f  
Tuner : Gotoh Geared tuner

KTT-2

Body : African Mahogany  
Frets : 14f/19f  
Tuner : Gotoh Geared tuner  
※Non slotted head  
※No image



KTT-2KS

Body : Hawaiian Koa  
Frets : 14f/19f  
Tuner : Gotoh Geared tuner

KTT-2K

Body : Hawaiian Koa  
Frets : 14f/19f  
Tuner : Gotoh Geared tuner  
※Non slotted head  
※No image

KIWAYA Student Model

KSU series

Low price, but with sure quality. Under the supervision of KIWAYA, the Student model teaches beginners how it is fun and easy to play ukulele.



KSU Series  
Common specification

Body : Layered Mahogany  
Neck : Mahogany  
Bridge : Black Walnut  
Nut & Saddle : Bone  
Head Plate : Black walnut  
Softcase included  
Strings : Clear Fluoro Carbon  
Satin Finish  
Made in China



Strap pin installed  
(Except for U-trip series)



KSU-1

Size : Soprano  
Frets : 12f/12f  
Length : 550mm  
Scale : 345mm  
Nut width : 35mm



KSU-1L

Size : Soprano  
Extended Neck Size  
Frets : 14f/18f  
Length : 580mm  
Scale : 380mm  
Nut width : 37mm



KCU-1

Size : Concert  
Frets : 14f/18f  
Length : 620mm  
Scale : 380mm  
Nut width : 37mm

U-trip series

“Ukulele to go on a trip together!!”  
Baby size ukulele for traveling,or for kids.

U-trip Series  
Common specification

Body : Layered Mahogany  
Neck : Mahogany  
Frets : 12f/12f  
Bridge : Black Walnut  
Nut & Saddle : Bone  
Head Plate : Black walnut  
Softcase included  
Strings : Clear Fluoro Carbon  
Satin Finish  
Length : 480mm  
Scale : 290mm  
Nut width : 35mm  
Made in China



KTU-1

Size : Tenor  
Frets : 14f/18f  
Length : 675mm  
Scale : 430mm  
Nut width : 38mm



KBU-1

Size : Baritone  
Frets : 14f/18f  
Length : 788mm  
Scale : 512mm  
Nut width : 38mm



U-trip01



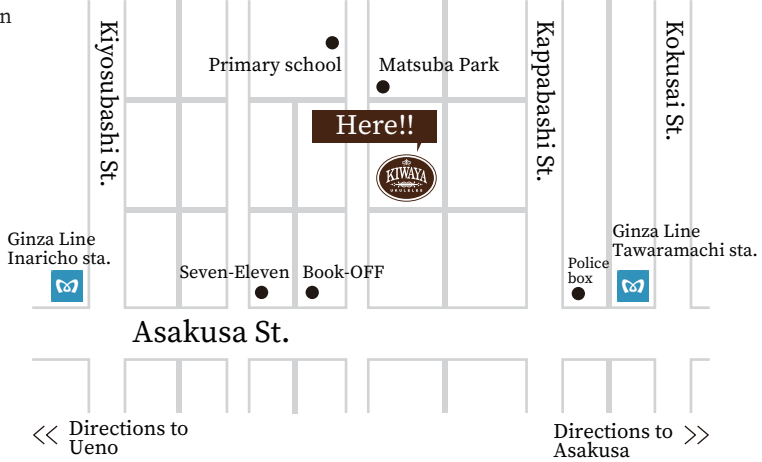
U-trip02

# Shop Information



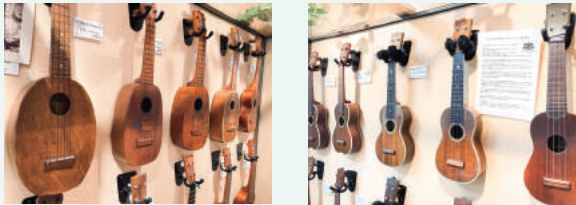
KIWAYA SHOWROOM - All kiwaya brands,Japanese Luthier made,import and USED Ukuleles.  
Displaying over 200 models,original cases and accsessories are selling here!

access | 1-7-3 Matsugaya, Taitou-ku, Tokyo, Japan  
zip code : 111-0036  
tel | 03-5828-4661  
business hours | 11 : 00 - 19 : 00  
regulrar holiday | Monday/Public holiday  
New Year's Holiday/Summer vacation  
mail | trade\_908@kiwaya.com



## 樂 UKULELE Museum RAKU

Purposing the presevation and succession of Ukulele culture, RAKU was made in April, 2004.  
Ukuleles from the genesis, golden age, and present, are displayed. Reservation is required to visit the museum.  
Please make a contact by email.



KIWAYA English website

Q KIWAYA search



Instagram  
kiwaya.international.official



Instagram  
kiwaya.ukulele.official (JAPAN)



Youtube  
KIWAYA Channel



● Specifications and parts may be subject to change without notice.  
● It may look different from the actual color tone.  
● Patterns and colours are varied, because of natural wood.

Published in January 2024 KIWAYA Co. Ltd