

Full Ki-Board Wireless Manual

HACOA

Notes on wireless

This product uses the 2.4 GHz frequency band. Bluetooth is in the same frequency band as 2.4 GHz wireless devices and wireless LAN devices and may affect other devices that use the same frequency band.

This device uses a frequency band of 2.4 GHz. Operated at this frequency are industrial, scientific, and medical equipment, including microwave ovens, as well as another similar wireless station; on-site wireless station that identifies a mobile object, requires a license, and is used for a production line at a factory; specific low-power wireless station not requiring a license; or amateur wireless station (hereafter abbreviated as "another wireless station").

1. Before using this device, confirm that another wireless station is not being operated nearby.
2. Should electromagnetic interference take place between this device and another wireless station, swiftly change the channel this device is using, change the place where the device is used, or stop using the device (stop radiation of the electromagnetic wave).

Notes on correct use

- Do not use this device on aircraft because it may affect the flight instruments of the aircraft.
- Because this device operates on electricity, it may catch fire. Should the device emit smoke or an abnormal odor, turn off power to this device, the PC, and devices connected to this device, and inform the distributor from which you purchased this device or our company.
- Do not open the cover of this product nor disassemble the product.
- Do not touch this product with wet hands.
- Make sure that no foreign object, such as a liquid or metal, gets inside this product.
- Do not expose the product to strong vibrations or shocks.
- Do not install or store this product in a place where there is a lot of moisture, direct sunlight, dust, oil, or smoke, or a place where the temperature is high, such as in a car or near a heater.
- Do not put a heavy object on this product.
- Do not install nor store this product in an unstable location.
- We assume no responsibility for the loss of data or programs while this product is being used.
- When cleaning this product, do not use anything containing volatile organic solvents, such as benzene or thinner.
- This product is not intended to be incorporated into equipment or devices that may involve human lives, such as medical equipment, nuclear equipment, aerospace equipment, or transportation equipment, or a facility, equipment, or a system that requires advanced reliability. We assume no responsibility if an accident resulting in injury or death or social disorder occurs as a result of using this product for the abovementioned reasons.

Specifications

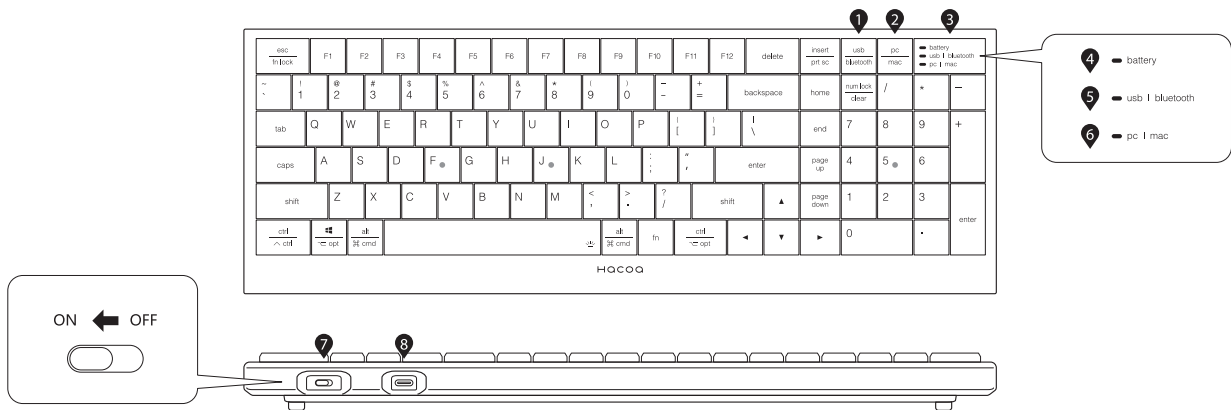
Number of keys/key indication	102 keys/English arrangement
Wireless method	Bluetooth5.0, RF2.4GHz
Communication distance	About 8 m
Key switch	Mechanical
Continuous operating hours	About 240 hours
Charging time	About 2 hours
Battery capacity	1,000mAh
Operating temperature	0°C to 40°C
Dimensions	W395xD140xH31.5 mm
Weight	About 870 g
Supported OS	Windows10, MacOS10.10, Android6.0, iOS10

*Updating to the latest version of the OS or installing a service pack may be necessary.
*The compatibility information was that when the operation was checked under our verification environment. It does not guarantee complete compatibility with all devices, OS versions, and applications.

Warranty Period
1 year from Date of Purchase
The warranty is effective only within Japan.

HACOA

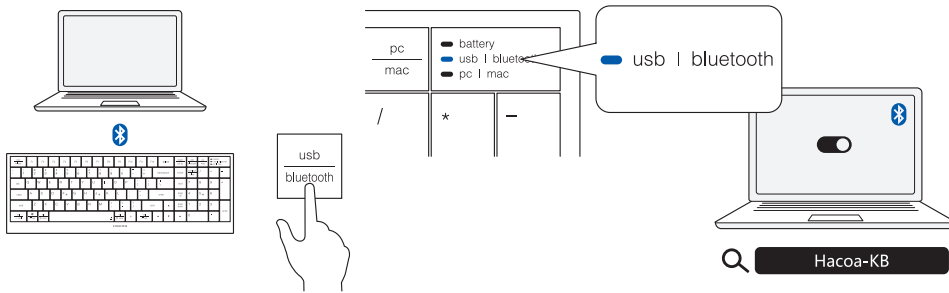
Distributed by : Hacoa Co. Ltd. <https://hacoa.com>
503 Nishibukuro-cho, Sabae-shi, Fukui, Japan 916-1221



- 1 Selection of USB receiver or Bluetooth connection
- 2 Switching the system
- 3 USB receiver accommodation (with cover)
- 4 Charging lamp
- 5 Mode lamp
- 6 System lamp
- 7 Power switch
- 8 Charging port

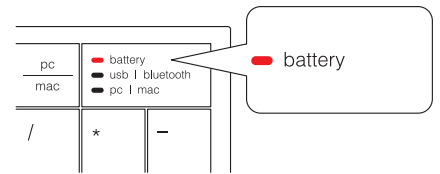
Bluetooth pairing procedure

Bluetooth mode/The blue LED lights for 3 seconds. Bluetooth pairing mode/The blue LED blinks.
Switch to the Bluetooth mode by pressing the "usb/Bluetooth" button.
Depressing the "usb/Bluetooth" button for 5 seconds sets the pairing mode, and the LED lamp blinks.

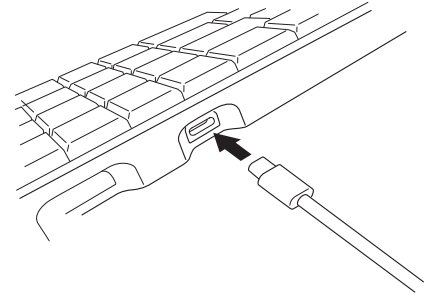


Charging method

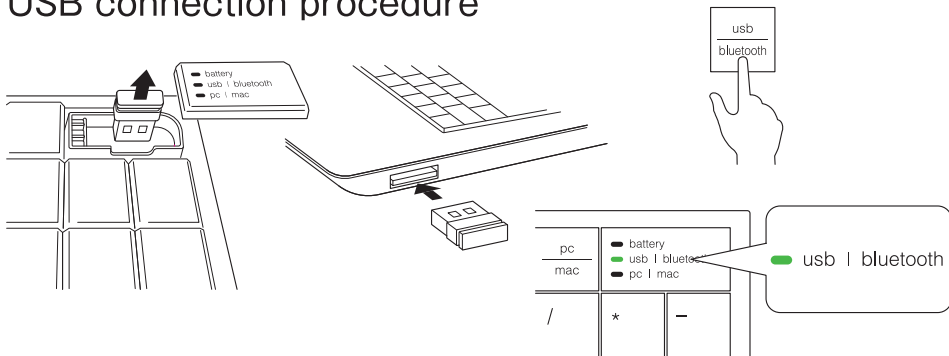
Charge the Ki-Board by using the supplied USB cable as an accessory. During charging, the battery lamp lights in green. It takes about 2 hours until the Ki-Board is fully charged.



Charge the Ki-Board by connecting it to the keyboard with a USB charging AC adapter of 1A or more (separately available).

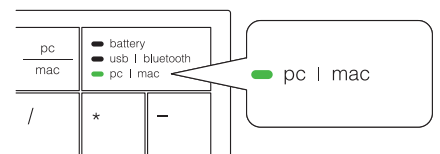


USB connection procedure



※The USB cable supplied as an accessory is for charging. It cannot be inserted into the USB port of a PC and used for USB connection.

Switching the system



PC mode/The green LED lights for 3 seconds.
Mac mode/The white LED lights for 3 seconds.

Change the mode of the system by pressing the "pc/mac" button.

Backlight



Key backlight
Adjusts brightness.



Key backlight
How the light shines changes.

※The backlight automatically turns off, and the Ki-Board enters a power-saving mode if the keyboard is not operated about 5 seconds after the backlight is turned on.

Screen shot



Captures a screen shot.

Changing arrangement of the keyboard (in the case of Japanese) (with Windows10)

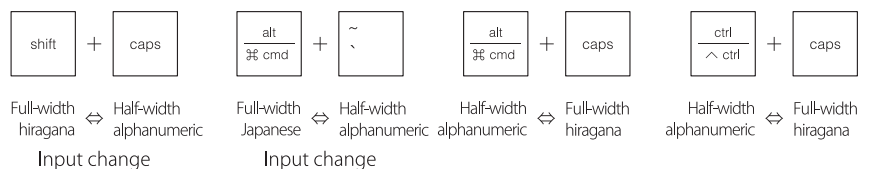
This product uses an English US arrangement keyboard. To input characters as inscribed on the keys, "English keyboard (101/102 keyboard)" has to be selected for the keyboard layout.

1. Click the Windows icon at the lower left, choose "Setting (gear icon)," and start "Setting" of Windows.
2. Click "Time and language."
3. Click "Language."
4. Click "Japanese" from "Language," and click "Option."
5. Click "Change layout" from "Keyboard layout."
6. If "Japanese keyboard (106/109 keyboard)" is set as the layout, change the setting to "English keyboard (101/102 keyboard)" and restart the PC.

Function key

- | | |
|----------------------------|----------------------|
| F1 Dims the screen | F7 To previous track |
| F2 Brightens the screen | F8 Playback/pause |
| F3 Changes the window | F9 To next track |
| F4 Shows/hides the desktop | F10 Mute |
| F5 Browser return | F11 Volume — |
| F6 Search | F12 Volume + |

Example of language change (to Japanese)



※The operation may differ from the above depending on your environment. In addition, the operation to be performed may differ depending on the update of the OS or change of the specifications of the OS.