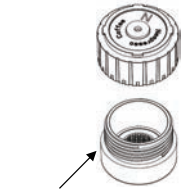


Operation Manual of Espresso Coffee Maker
GC-CP020



For First Use You Must Know

- 1. Charge battery to full
- Use USB-TYPE C charging cord connect machine and adaptor to charge machine to full battery before your first use. Allow 3 hours.
- You can press boil button once to check battery level.
- A fully charged battery can make 3 to 4 cups of espresso with cool water (25 C/77 F); Or to make 200 cups of espresso by pressing 3s direct mode with pure water
IMPORTANT:
1. CHARGING CORD IS ONLY FOR CHARGING, WHEN YOU USE THE MACHINE, PLEASE DISCONNECT THE CHARGING CORD.
2. THE ADAPTOR OUT PUT MUST BE DC 5V 2A OR ABOVE, BELOW THIS SPECIFICATION WILL CAUSE MACHINE CHARGING ABNORMAL.
3. THIS PROUCT DOES NOT INCLUDE ADAPTOR.
- 2. About Cleaning
- ONLY wash the Drinking Cup, CHAMBER..
- Machine has its internal self-cleaning function: fill water and press direct brew button for 3 seconds without capsule or coffee.
IMPORTANT:
1. DO NOT WASH MAIN BODY OF MACHINE;
2. DO NOT IMMERSE MACHINE TO ANY LIQUID. THIS WILL LEAD TO MACHINE MALFUNCTION.
3. WHEN MACHINE IN USE OR HAVING THE SELF-CLEAN FUNCTION, DO NOT PLACE IT UPSIDE DOWN.
- 3. About Temperature
- When use boil button function, machine use precise NTC sensor to control water temperature to 92 C (198 F) , coffee temperature over 75 C-80 C (167 F-176 F)
- Do not use ICE water for heating, room temperature water or boiled water recommended.
- No need to open drinking cup during machine works. Opening the cup will lead to lower coffee temperature.
- 4. About N chamber
- Only use Genuine Nespresso capsule or L'OR capsule. Other reusable capsule cup might affect or even damage this machine.
- Every coffee capsule should be used for one shot only.
IMPORTANT-WHEN YOU SCREW THE LOWER CHAMBER CAP (IMAGE 1), BE SURE YOU HAVE FULLY TIGHTENED THE LOWER CHAMBER CAP AFTER INSERTING THE COFFEE CAPSULE.
- 5. About G chamber
- Please have ground coffee at middle coarseness- according to Nespresso coarseness.
- Fill ground coffee 12-15G, use tamper to press slightly to flat, very fine or too much coffee will cause machine abnormal.
IMPORTANT-WHEN YOU SCREW THE LOWER CHAMBER CAP (IMAGE 2), BE SURE YOU HAVE FULLY TIGHTENED THE LOWER CHAMBER CAP AFTER FILLING THE GROUND COFFEE.



Lower chamber cap of N chamber
IMAGE1



Lower chamber cap of G chamber
IMAGE 2

- 6. Descaling
- Always use pure water or distilled water to fill into water tank.
- Use wet cloth to remove limescale in water tank.

This appliance is not intended for use by persons (including children) with reduced physical, sensory or mental capabilities, or lack of experience and knowledge, unless they have been given supervision or instruction concerning use of the appliance by a person responsible for their safety.

Children should be supervised to ensure that they do not play with the appliance.

The appliance is only to be used with the power supply unit provided with the appliance, it must only be supplied at safety extra low voltage corresponding to the marking on the appliance. This appliance contains batteries cores that are non-replaceable.

If the supply cord is damaged, it must be replaced by the manufacturer, its service agent or similarly qualified persons in order to avoid a hazard. This appliance is intended to be used in the car. If the appliance is used with the DC adaptor, it can be used in household and similar applications such as:
- staff kitchen areas in shops, offices and other working environments;
- farm houses;
- by clients in hotels, motels and other residential type environments;
- bed and breakfast type environments.
The appliance must not be immersed.
Warning: avoid spillage on the connector
Warning: potential injury from misuse
The heating element surface is subject to residual heat after use.
The coffee-maker shall not be placed in a cabinet when in use.
Cleaning and user maintenance shall not be made by children without supervision.

This appliance can be used by children aged from 8 years and above if they have been given supervision or instruction concerning use of the appliance in a safe way and if they understand the hazards involved. Cleaning and user maintenance shall not be made by children unless they are older than 8 and supervised. Keep the appliance and its cord out of reach of children aged less than 8 years.
Warning: Not using the non-rechargeable batteries.

The battery must be removed from the appliance before it is scrapped. The appliance must be disconnected from the supply mains when removing the battery.

The battery is to be disposed of safety.

Warning: For the purposes of recharging the battery, only use the detachable supply unit provided with this appliance.

[Preface]

Thank you for using our coffee maker. In order to ensure your correct operation and maintenance of this appliance, this Manual shall be read carefully before operating the appliance, and kept properly for future reference. This Manual is only applicable to our coffee maker. The Company reserves the final interpretation right. All the contents in the Manual are for the user's reference during operation and maintenance. For the unmentioned matters, the users are welcomed to consult our customer service department. In case of any deficiency found in this Manual, the users' valuable opinions are welcomed. We hope that our products can bring you the warm, convenient and healthy life.

Instruction manual and rating label meet IEC60335-1/A2 Annex B requirement

[Contents]

- Safety precautions.....
- Name and operation method of each component.....
- Operation method.....
- Heating and making of coffee.....
- Direct pumping of coffee.....
- Cleaning and maintenance.....
- Operation instructions of power supply.....
- Specifications and parameters of the appliance.....

⚠[Safety precautions]

The significant contents concerning safety must be read carefully in order to protect you and others from injury and damage.

- The wrong operation may cause two degrees of dangers:
⚠ Warning: the contents that may cause death or serious injury.
⚠ Caution: the contents that may cause dangers.
• Introduction of symbols and contents of safety precautions:
⊘ Contents that are forbidden ⚡ Contents that must be implemented

⚠【Warning】

- Be careful about scalding:



Never touch the heating disc and steam vent of coffee marker when and immediately after this appliance is used for making and heating the coffee.



Special care shall be taken to prevent children from touching the appliance (for fear of scalding).
1. The water tank cap must be installed well when the appliance is being used for making and heating the coffee.
The water in the water tank, if excessive, may overflow (for fear of scalding).



Never shake the appliance body during use.
The coffee maker may topple and fall (for fear of scalding).



The filled water must not be over the MAX (maximum) water level line marked on the water tank of coffee maker.
The water may overflow.

- Notice the use conditions of power wire, power plug and battery.



1. Use the rated 5A/ 220-240V power socket separately.

When this appliance shares the same multi-purpose socket with other electric appliances, abnormal heating may occur (risk of ignition and fire). If the multi-purpose socket is used, its rated current shall be above 5A, and it shall be used separately.



1. Insert the power plug into the socket to the end.
(Risk of ignition and fire caused by electric shock and short circuit)



1. Remove the dust on the power plug periodically.
Bad contact caused by moisture and other reasons (risk of ignition and fire caused by bad contact)
→Wipe the power plug with dry cloth.



Never unplug the power plug by the wet hand (risk of electric shock).



Never destroy the power wire or power plug.
Without permission, never machine, damage, excessively bend, forcefully pull or twist the power wire or power plug, place the power wire or power plug near the heating object or under heavy load, or squeeze the power wire or power plug (potential risk of ignition and fire caused by electric shock and short circuit).



If the power wire or power plug is damaged, or still loosen after they are inserted into the socket, never use the appliance (risk of ignition and fire caused by electric shock and short circuit)



Never disassembly or damage the battery (potential risk of ignition and fire caused by short circuit of battery).



Never place the battery on the flame (potential risk of ignition and fire caused by battery).

- In order to avoid accidents, the followings must be followed:



The children must not use the appliance in dependently. Never use the appliance at the position that any children can reach (risk of scalding, electric shock or injury).



Never disassemble, repair or modify this appliance (risk of scalding, electric shock or injury) → For the repair of the appliance, please consult the dealer.



The appliance must not be immersed in water, or splashed by water. (Risk of ignition caused by electric shock and short circuit)



In case of abnormality or fault, stop the appliance immediately, and unplug the plug from the power socket. (Possibility of smoking, ignition, electric shock, scalding and injury)
<Abnormality and fault cases>
• The power wire or power plug is deformed, discolored or damaged;
• A part of power wire or the power plug becomes hot;
• In case of moveable power wire, the appliance is powered on and off intermittently;
• The appliance body becomes abnormally hot, or has the burning smell;
• The application body has abnormal sound during operation.
※ For maintenance and repair of the appliance, please contact the after-sales department of the Company.

⚠【Caution】

- Never use the appliance under the following conditions



Never use the appliance near the fire (risk of fire)

- Notice the use of power plug



To unplug the power plug, it is necessary to hold the power plug, not the power wire. (Risk of fire caused by electric shock and short circuit)

- Be careful about scalding or injury.



Never open the water tank cap during or immediately after heating before the water in the water tank is pumped out (risk of scalding).



Never touch the hot water, PTC or other h igh-temperature position during or immediately after use of the appliance (risk of scalding).



Notice not to touch the piercing knife during use of the appliance or when cleaning the interior of extracting chamber because the sharp knife may hurt your finger.



The appliance shall be cleaned after it cools down (risk of scalding).

⚠【Caution】

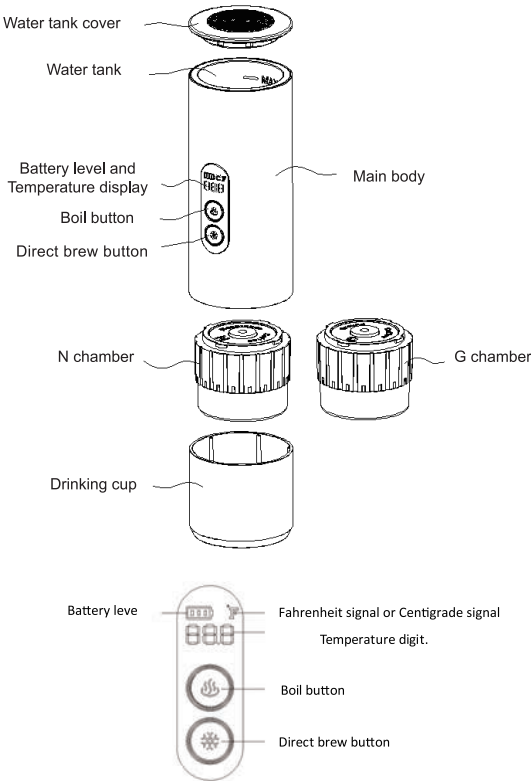
- Notice to wash the extracting chamber, extracting chamber cap and cup and wipe them dry before and after using the appliance; the residual coffee, if any, may case abnormal taste and food decomposition.

- The appliance body can cleaned by wiping with wet cloth..

- During use, please use the clean drinking water for heating and pumping because the sundries or particles in the water, if any, may produce scale deposits inside the appliance or damage the water pump. During use, please use the clean drinking water for heating and pumping because the sundries or particles in the water, if any, may produce scale deposits inside the appliance or damage the water pump.
- If the appliance drops onto the ground, please unplug the power plug from the power socket. In case of any fault, please contact our after-sales department.

Never use the appliance without water (potential risk of fault).

【Name and operation method of each component】



This product includes coffee machine x1, N chamber x 1(suitable for Nespresso capsule), G chamber x 1(suitable for ground coffee or tea), USB –TYPE-C charging cord x 1

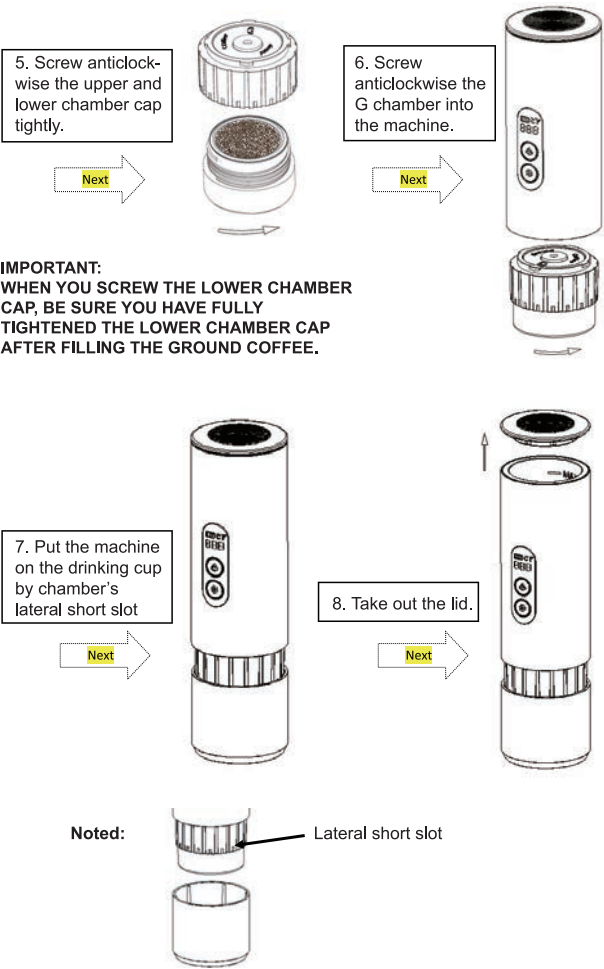
「Operation guide」

Charge battery to FULL before your first use.



Noted:
Press 2 buttons and hold for 5seconds to switch to Centigrade or Fahrenheit.

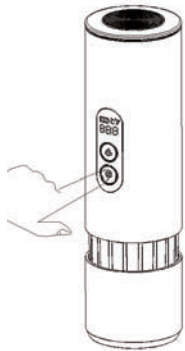
1. Boil button: Press boil button for 3 seconds; then the buzzer makes one sound, the button lamp and battery level, temperature digit display go on, and the heating disc starts heating. When the water temperature is up to the suitable temperature, the buzzer makes two sounds, and water pump starts pumping. After pumping, the water pump stops.
2. Direct brew button: Press direct brew button for 3 seconds; then the buzzer makes one sound, the button lamp and battery level, temperature digit display go on, and the water pump starts pumping. After pumping, the water pump stops.
3. If you press any button once during the above two operations, the appliance will stop.
4. The battery level indicates the power capacity of battery:
 - a. When three bars are on together, the power capacity is sufficient;
 - b. when two bars are on together, the power capacity is about 60%;
 - c. when only one bar is on, the power capacity is about 30%, in case of low power capacity, the machine shall be charged.
5. **Short press** any button can check battery level.



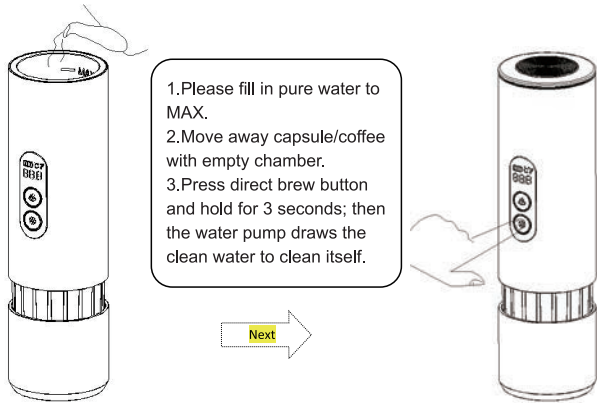
「Cool brew and making of coffee」

Repeat step 1 to step 9,

10. Press direct brew button and hold for 3 seconds, machine start to brew coffee without heating. After brewing, take out the machine and enjoy your coffee.

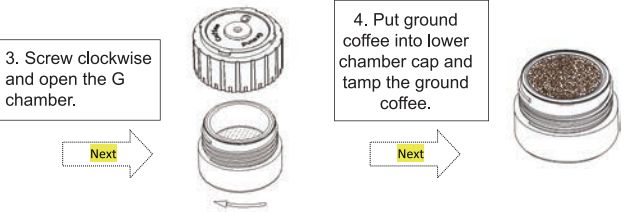
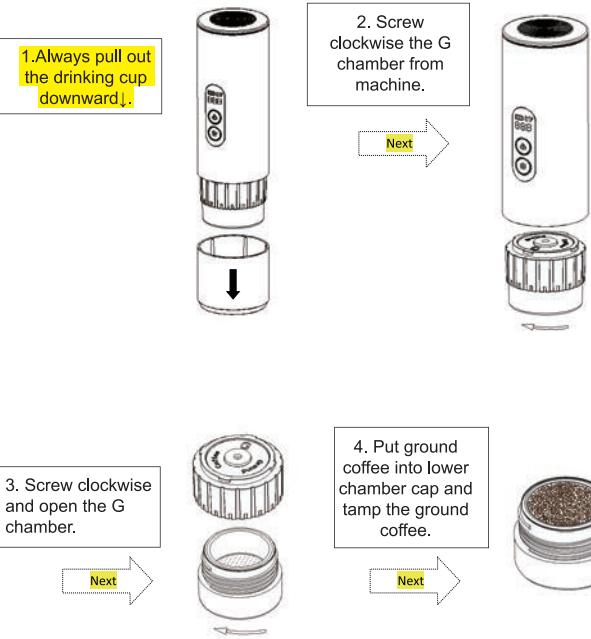


【Cleaning and maintenance】



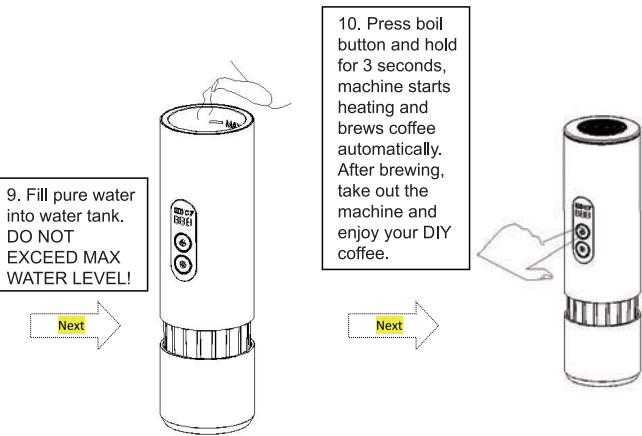
【Operation method】

「Heating and making of coffee (Using G chamber)」

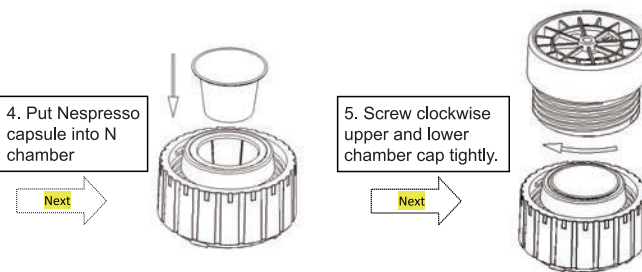


NOTED:

- Please have ground coffee at middle coarseness- according to Nespresso coarseness.
- Fill ground coffee 12-15G, use tamper to press slightly to flat, very fine or too much coffee will cause machine abnormal.



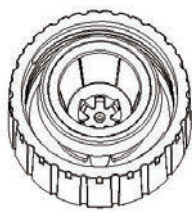
「Heating and making of coffee (Using N chamber)」
Repeat the above step 1 to step 3,



- Noted:
- Only use Genuine Nespresso capsule or L'OR capsule. Other reusable capsule cup might affect or even damage this machine.

Repeat step 6 to step 10, then enjoy your professional coffee.

IMPORTANT:
WHEN YOU SCREW THE LOWER CHAMBER CAP, BE SURE YOU HAVE FULLY TIGHTENED THE LOWER CHAMBER CAP AFTER INSERTING THE COFFEE CAPSULE.



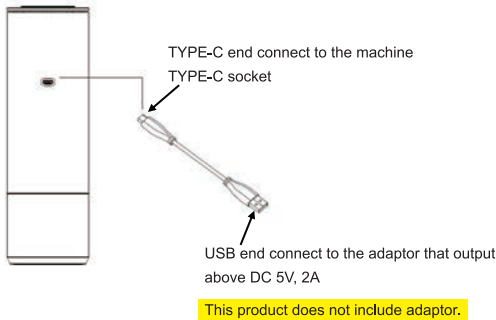
After the above method, wipe it dry with cloth or dry it in air.
Caution:
•During wiping, notice that your fingers must not touch the internal piercing knife because the knife is sharp and may result in injury.

The chambers and drinking cup can be washed under faucet as well.

IMPORTANT:
1.DO NOT WASH MAIN BODY OF MACHINE;
2.DO NOT IMMERSE MACHINE TO ANY LIQUID. THIS WILL LEAD TO MACHINE MALFUNCTION.
3.WHEN MACHINE IN USE OR HAVING THE SELF-CLEAN FUNCTION, DO NOT PLACE IT UPSIDE DOWN.

【Operation instructions of power supply】

This coffee machine packed with a USB-TYPE C charging cord. Plug in the TYPE-C end into TYPE-C socket of machine, and plug in the USB end into adaptor to charge the machine.
Noted: The out put of the adaptor should above DC 5V, 2A, otherwise will cause machine abnormal.



This product does not include adaptor.

【Specifications, parameters and maintenance of the appliance】

- Specifications and parameters

Rated voltage	12V DC
Rated power	150W
Maximum capacity	80ml
Dimension	L73*W73*H230mm
Weight	About 0.8kg

- ※Owing to product improvement, the product parameters may be changed without advance notice.
- ※The performance cannot be guaranteed in the specific region (high land or extremely cold region).