



## **ELEMENT SKY VIEW**

# **INSTALLATION INSTRUCTIONS**

Congratulations on your purchase of a high quality PUTCO product. Should you need any application or technical assistance, feel free to call us at: 1-800-247-3974

Monday-Friday 8:00 a.m. - 5:00 p.m. (Central Standard Time)

Contact your PUTCO dealer for other quality accessories.

**Please read all instructions before installation and to check to see that all parts are included.**

CONTENTS:	
Description	Qty.
Element Sky View Roof Panel	1
M8 Bolt	4
M8 Washer	4

### **Tools Needed:**

- 6mm Hex Key



## Installation Instructions:

1. Remove the front section of the factory hard top.



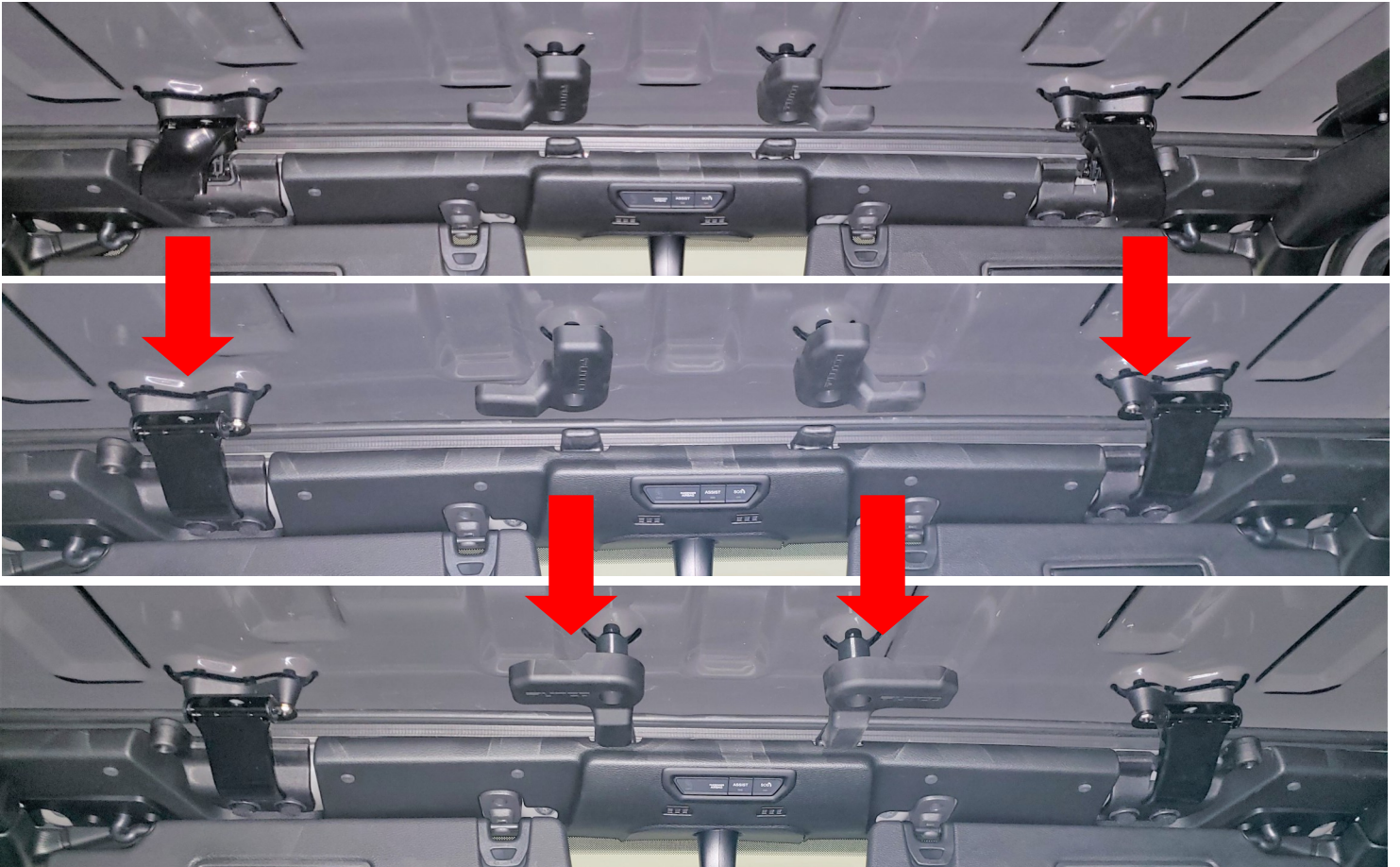
2. Place the Element Sky View panel on the top of the vehicle.





## Installation Instructions Continued:

3. Close the two front clamps,. Then close the two front L-shaped clamps.



4. Close the rear two L-shaped clamps. (picture pointing to the rear clamps)





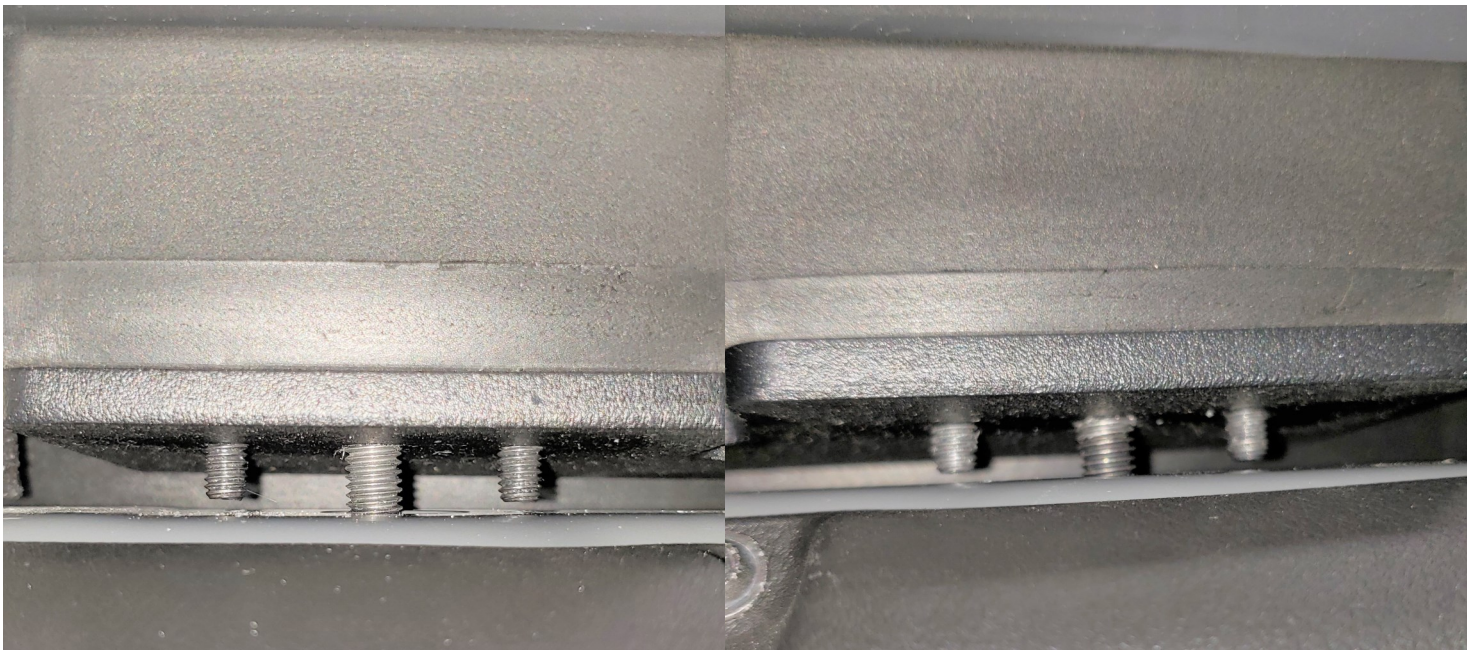


## ***Installation Instructions Continued:***

5. Loosely thread the four M8 bolts into the adapter plates.



6. Tighten the M8 bolts leaving a small gap between the Skyview hardware and the roll bar on the vehicle. Do not overtighten.



***Your new Element Sky View Roof is now  
successfully installed on your vehicle!***

## ELEMENT SKY VIEW

### ROOF PANEL CARE INSTRUCTIONS

- Do NOT use chemicals or abrasives on the clear roof panel.
- Use only water and wipe GENTLY with a microfiber towel for cleaning. Applying too much pressure can scratch the Element Sky View roof panel.
- When taking the Element Sky View roof panel through a car wash, use only a TOUCHLESS car wash. The brushes in a regular car wash can scratch the Element Sky View roof panel.

