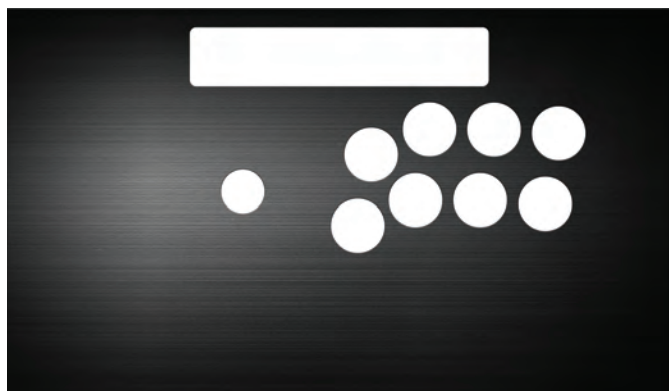


RAZER PANTHERA

PANEL CONVERSION KIT INSTALL GUIDE

ITEM CHECKLIST



PANTHERA BRUSHED
ALUMINUM PANEL KIT x1

**AVAILABLE IN VEWLIX AND NOIR VARIANTS*



RAZER PANTHERA (SOLD SEPARATELY)

SUGGESTED TOOLS



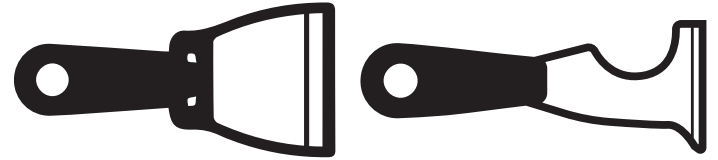
SLOTTED (FLATHEAD) SCREWDRIVER



PHILIPS SCREWDRIVER (PH2)



ALLEN KEY HEX TOOL (5/32)



SCRAPER/WEDGE & OR PAINTER'S TOOL



UTILITY KNIFE/CUTTER

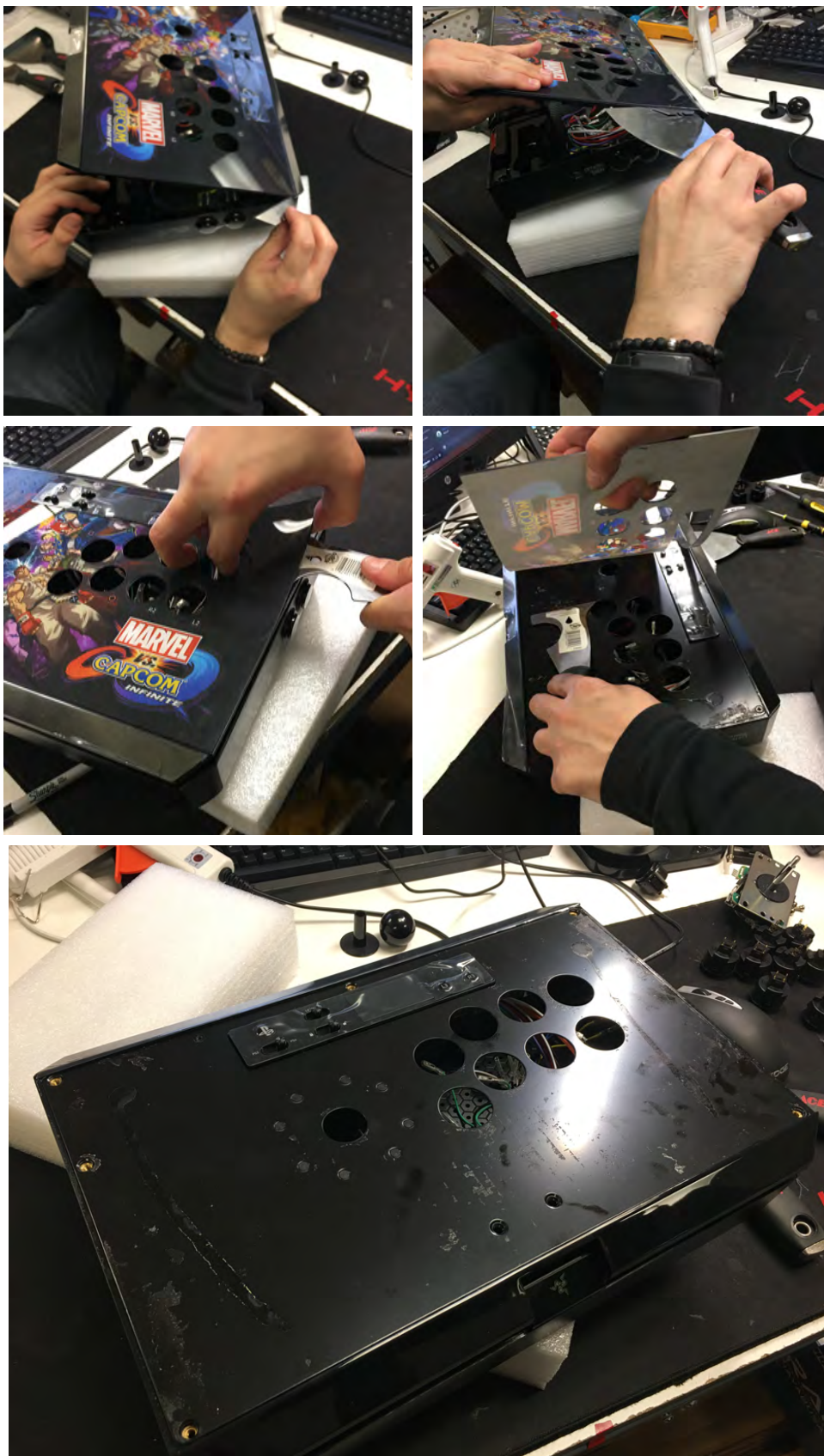
INSTALL PROCESS

1



**DISCONNECT AND DISASSEMBLE THE JOYSTICK
AND ALL THE MAIN 8 BUTTONS FROM THE UNIT.**

2

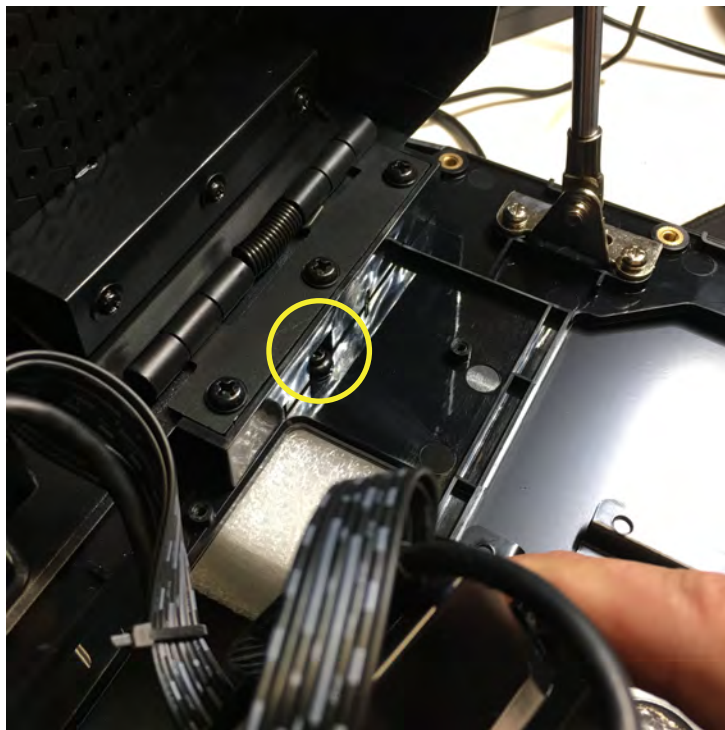


**USING A KNIFE SLIT AN OPENING TO START REMOVING THE STOCK PLEXI TOP.
WITH A SCRAPER OR PAINTER'S TOOL, CAREFULLY WEDGE THROUGH TO REMOVE THE PLEXI TOP PART.**

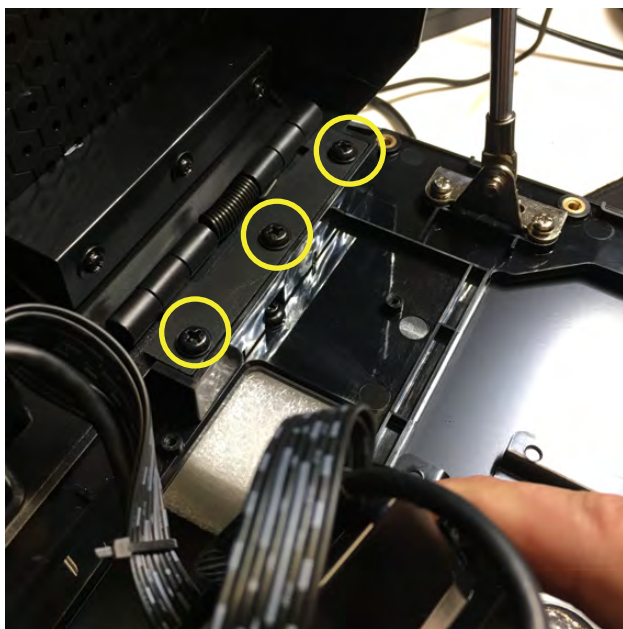
3



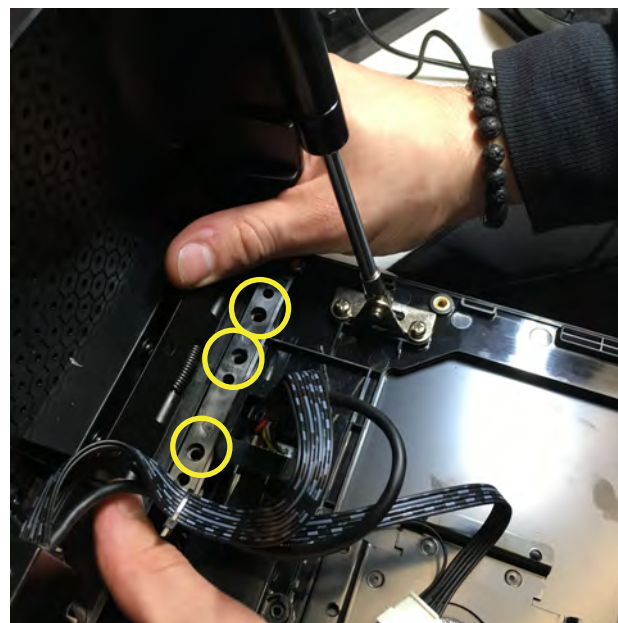
**DISASSEMBLE THE FUNCTIONS
& TOUCHPAD PANEL**

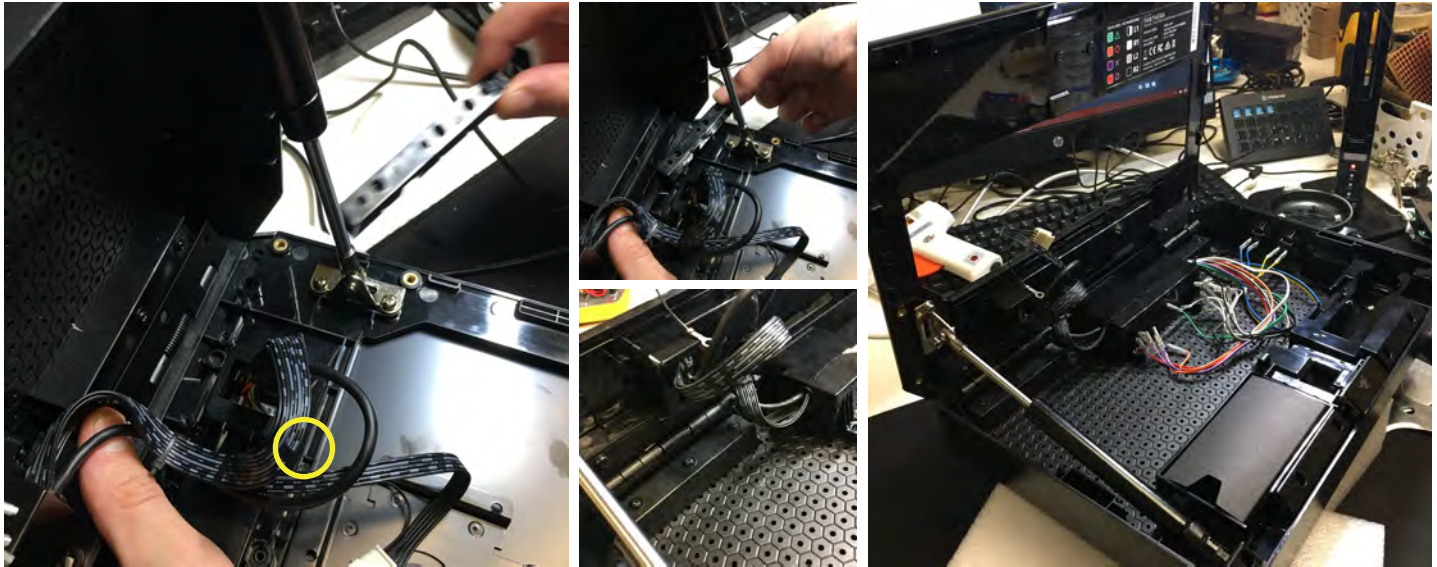


**TAKE NOTE OF THE “HIDDEN SCREW”
THAT THREADS THROUGH THE ORIGINAL
PANEL LOCATED WITHIN THE
LEFT HINGE ASSEMBLY**



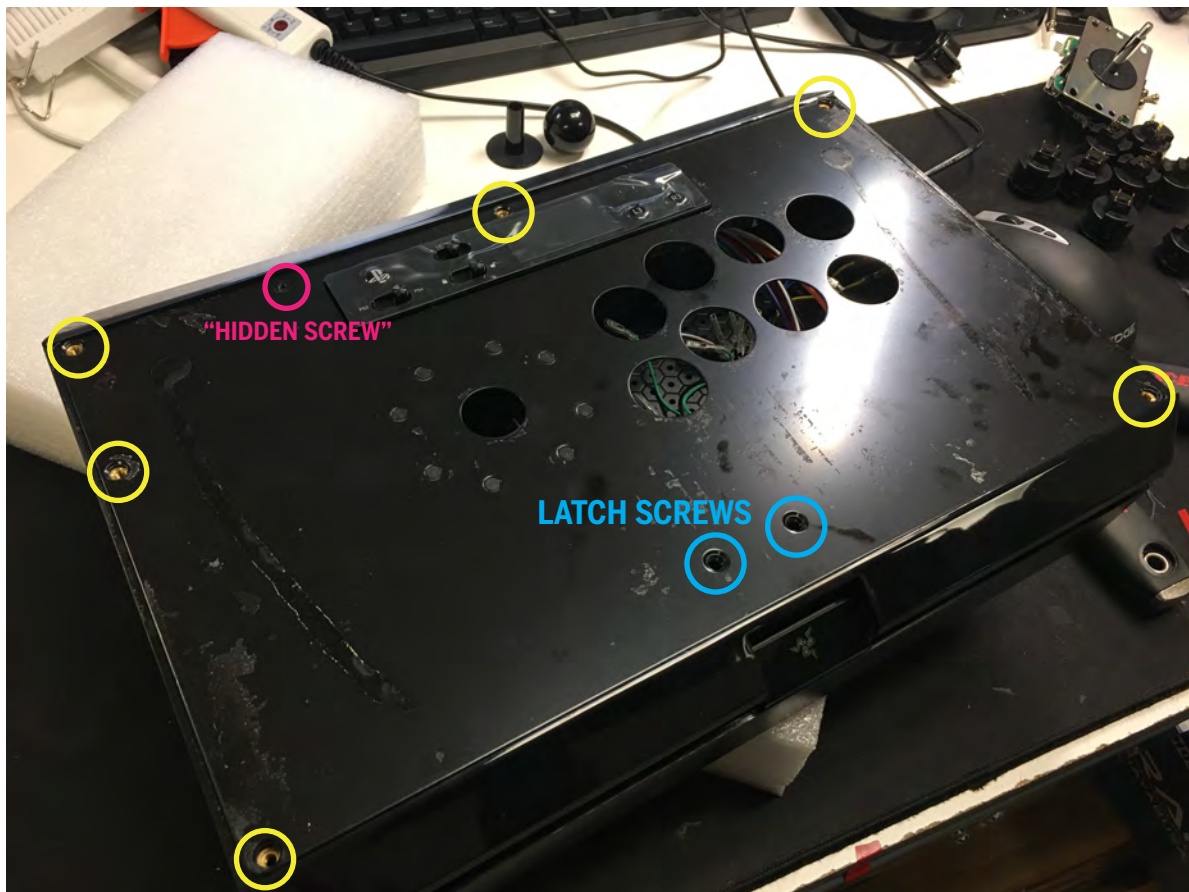
**DISASSEMBLE THE LEFT HINGE
BY UNDOING THE FOLLOWING
SCREWS**





EXTRACT THE “HIDDEN SCREW” AND RE-ASSEMBLE THE LEFT HINGE ALONG WITH THE FUNCTIONS/TOUCH PANEL PCB ASSEMBLY

4



DISASSEMBLE THE STOCK INNER PANEL BY EXTRACTING THE HIGHLIGHTED SCREWS. TAKE NOTE OF THE **LATCH SCREWS AS THEY WILL DISASSEMBLE THE LID'S LATCH ASSEMBLY. (SKIP TO STEP 5 IF INSTALLING A VEVLIX PANEL)**



AFFIX THE NEW INNER PANEL WITH THE LATCH SCREWS AND THE SINGULAR PANEL SCREW TO THE LEFT SIDE AS HIGHLIGHTED.



CONTINUE TO INSTALL THE BRUSHED ALUMINUM TOP PANEL BY AFFIXING THE HIGHLIGHTED SCREWS



REINSTALL THE LEVER AND PLUG-IN DESIRED PUSHBUTTONS.

6



**RE-CONNECT THE WIRES
FOR THE ACTION BUTTONS
USING THE COLOR CODED
GUIDE INSIDE THE ARCADE
STICK.**

ASSEMBLY IS COMPLETED.