

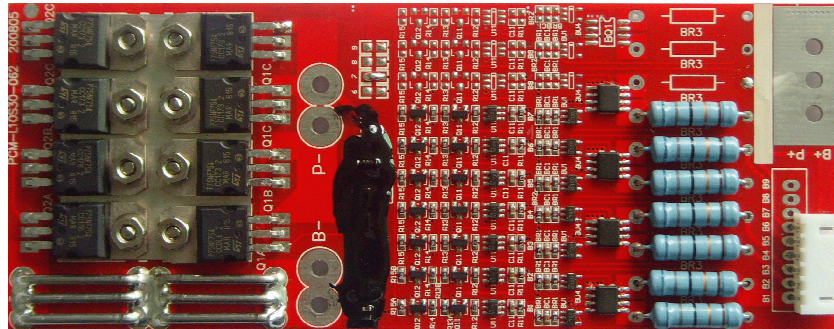
Protection Circuit Module Specifications For 25.9V Li-ion/Li-Po Battery Pack

- Model: PCM-LI25.9V16A
- Apply for:
7 cells Li-ion /Li-polymer battery pack protection
- Dimension: L145*W59*T9mm
- Weight: 64 gram

- Electric performance:
- * Overcharge protection voltage for single cell: $4.325 \pm 0.025V$
 - * Overdischarge protection voltage for single cell: $2.50 \pm 0.05V$
 - * Balance voltage for single cell: $4.20V \pm 0.025V$
 - * Overcurrent detection protection: $95 \pm 10A$
 - * Maximal continuous discharging current: 16A
 - * Maximal current consumption for single cell: 50uA
 - * Protection circuitry resistance: $\leq 20m\Omega$

Port design:

PCM-L07S30-073 L145*W59*T9mm



P+ = Charge+/Discharge+ P- = Charge-/Discharge-