

020

**1/12 SCALE
ASSEMBLY MODEL**

PREMIUM
Quality
GUARANTEED

WWW.CROSS-RC.COM



CROSSRC

USER'S MANUAL

CAUTIONS

To prevent serious personal injury and/or property damage, operate all remotely controlled models in a responsible manner as outlined herein.

◆ Safety Precautions

- 1.1 Choose a right place to operate your RC model.
- 1.2 Do not operate your RC model on the street or highway. It can cause a serious damage or a serious accident.
- 1.3 Never operate your RC model near people or animals.
- 1.4 Do not operate RC model in public places like hospital and residential areas.
- 1.5 Never operate RC model indoors. There is a higher possibility of fire or damage.
- 1.6 Keep the parts out of reach of children, small parts can cause choking and vinyl bags can suffocate.
- 1.7 Do not use with children younger than 14 years.

◆ Inspect your RC model before operation

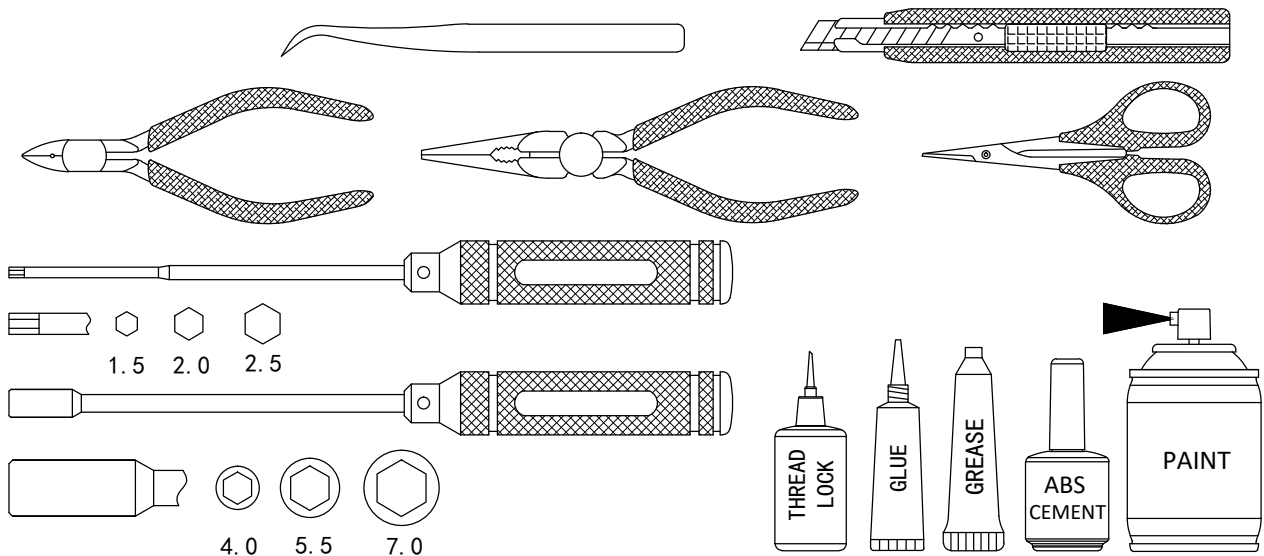
- 2.1 Make sure that all screws and nuts are properly tightened. It is also a good idea to use removable thread lock wherever metal screws go into metal, especially for engine mounts and the engine pilot shaft.
- 2.2 Always use fresh batteries for your transmitter and for your receiver to avoid losing control of the model.
- 2.3 Always test the brakes and throttle before starting your engine to avoid losing control of the model.
- 2.4 Always turn on the transmitter first, and then turn on the receiver.

◆ After operation of your RC model

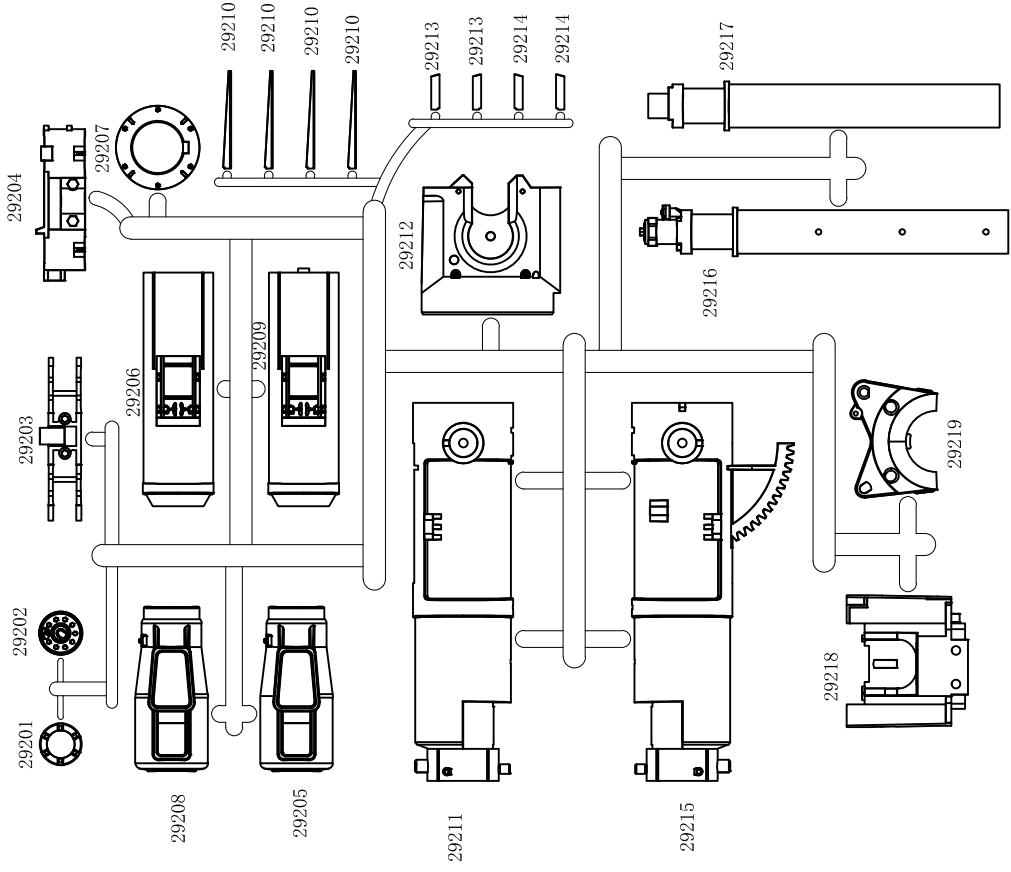
- 3.1 Turn off receiver first, then turn off transmitter, this will prevent runaways.
- 3.2 Be careful when handling batteries, they will be hot after running.
- 3.3 Replace any batteries that have been dented or have frayed wires, short circuits can cause fire.

TOOLS

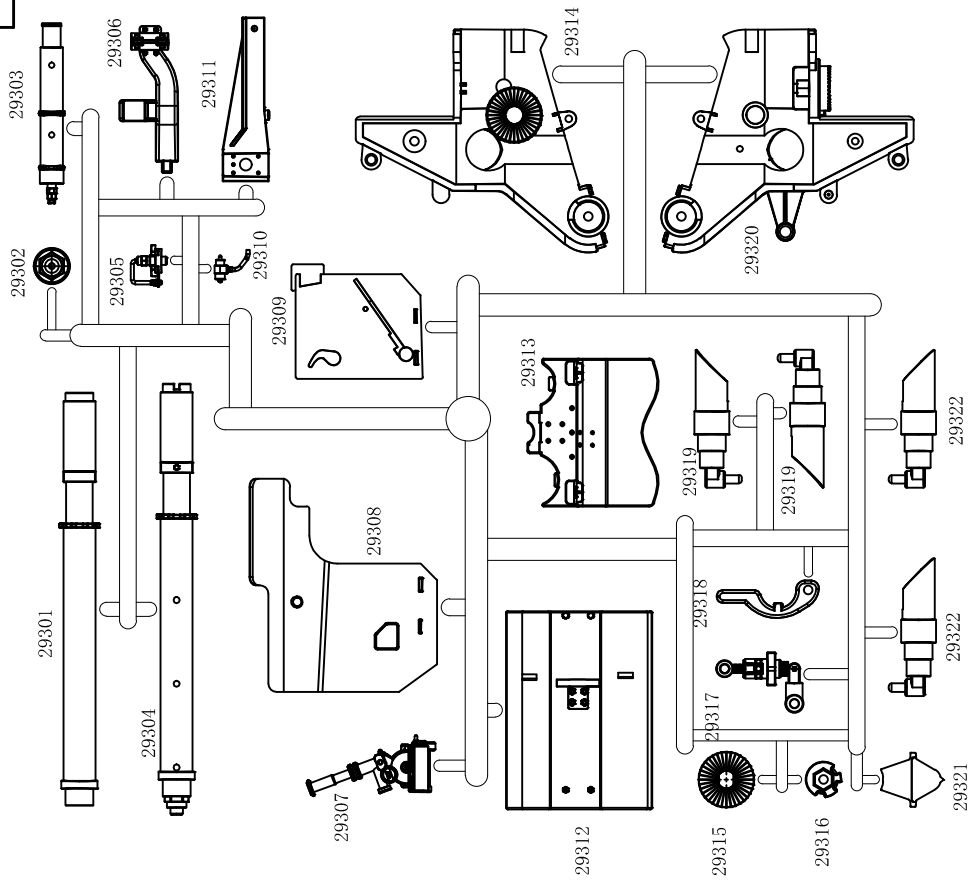
(Not included)



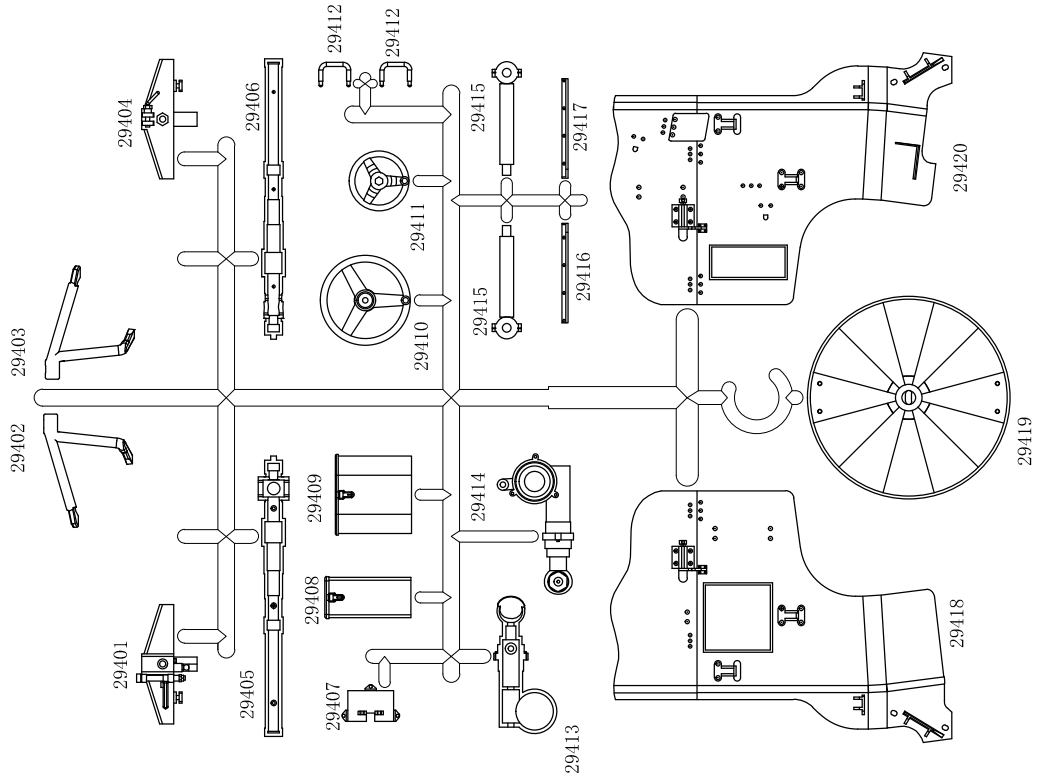
No.292



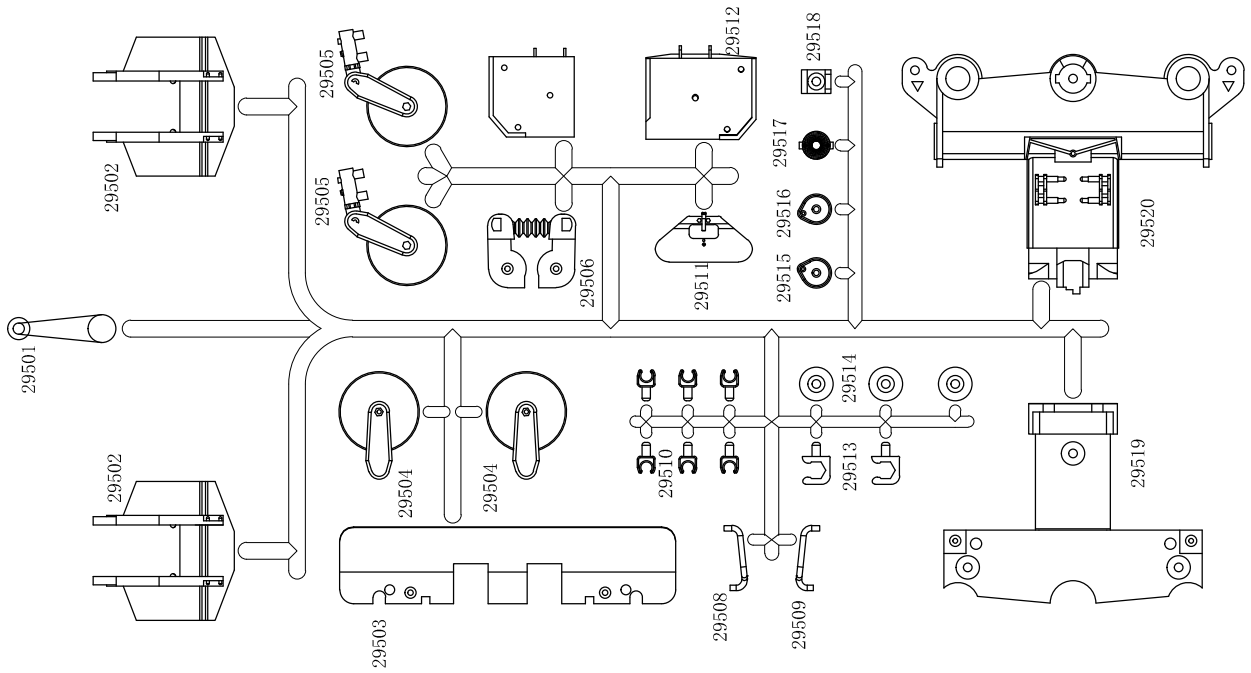
No.293

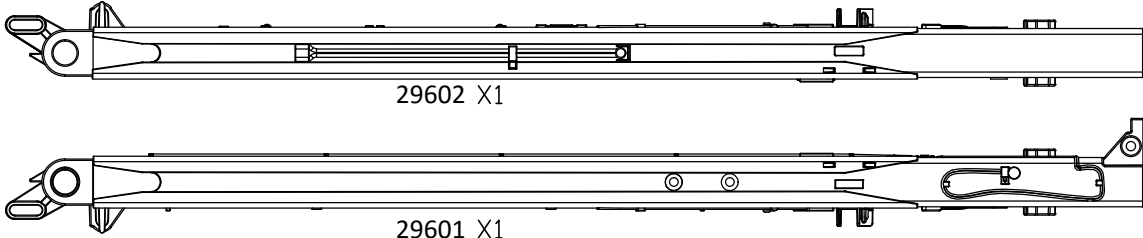

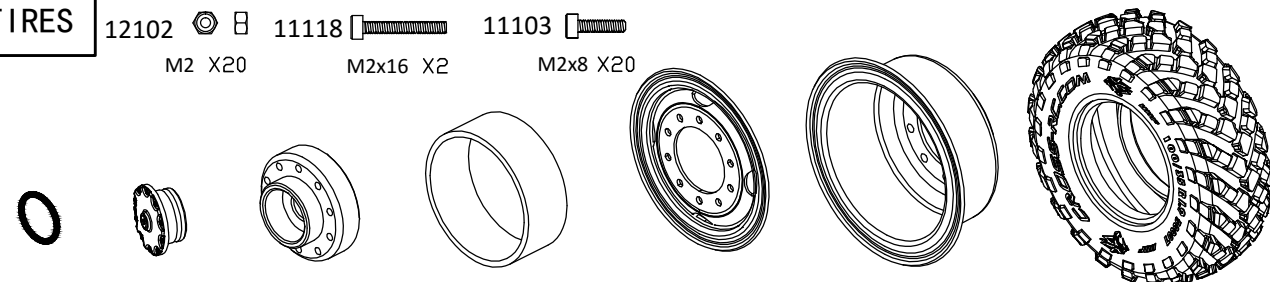
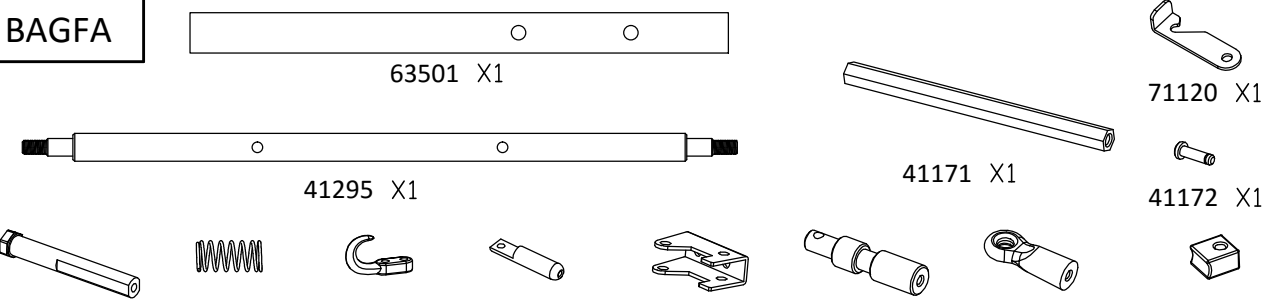
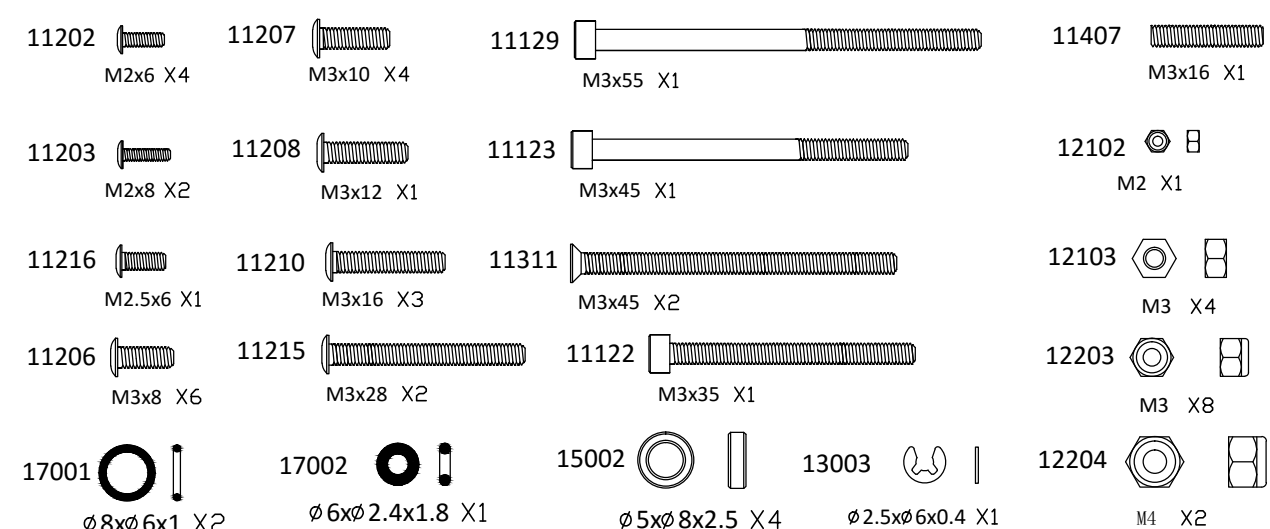


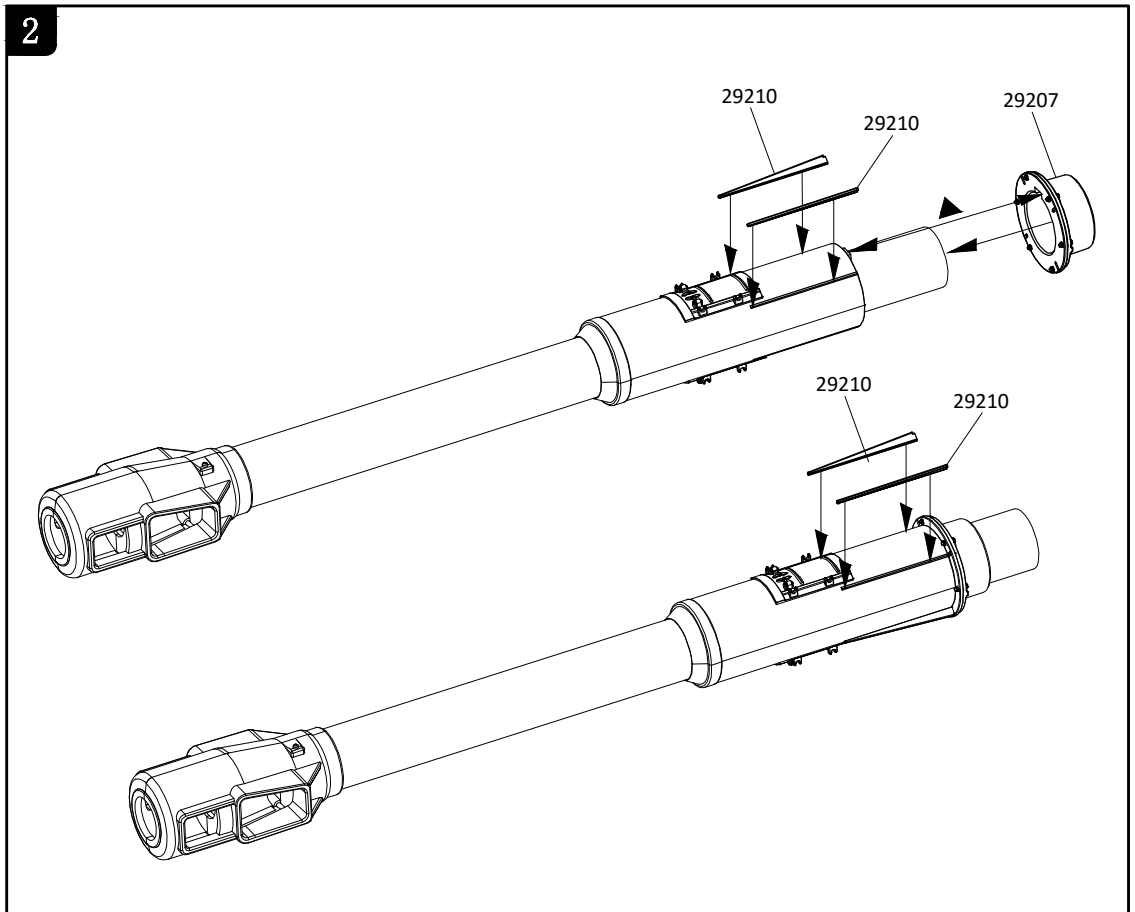
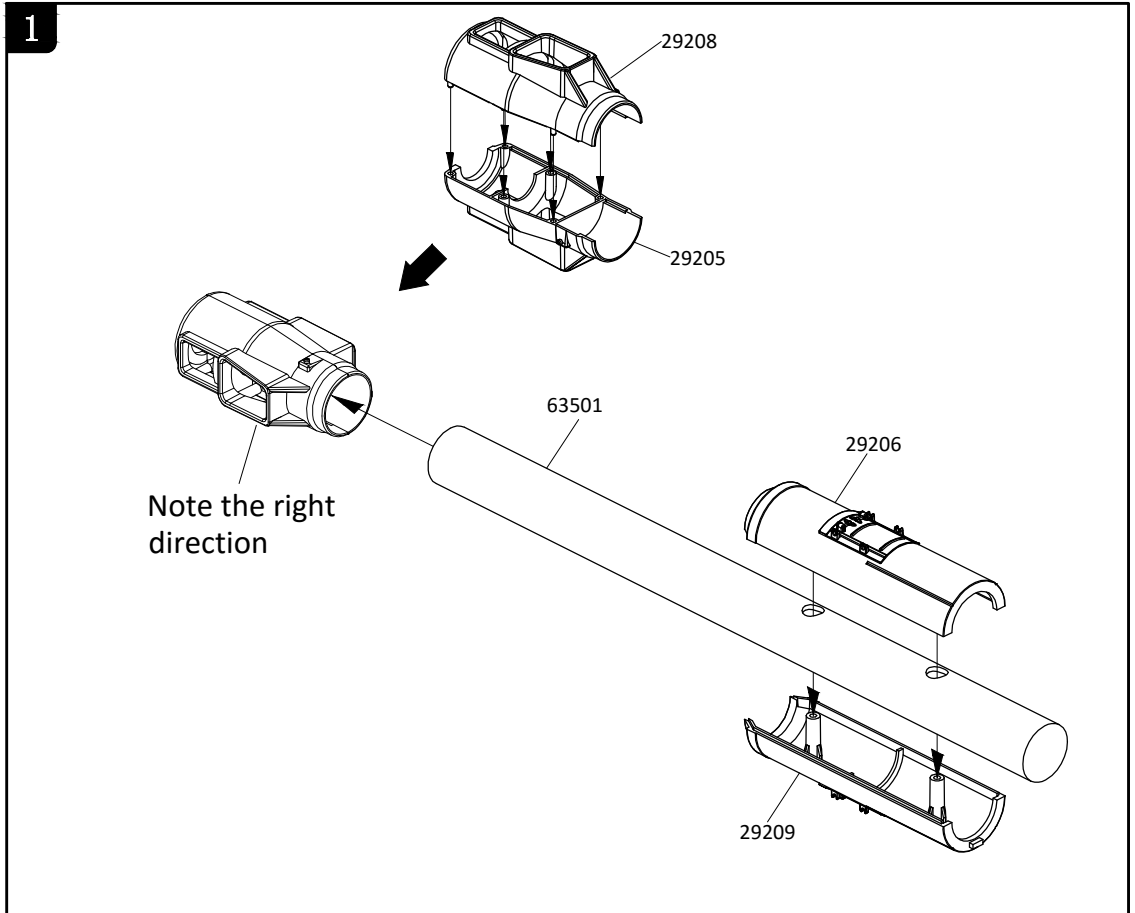
No.294

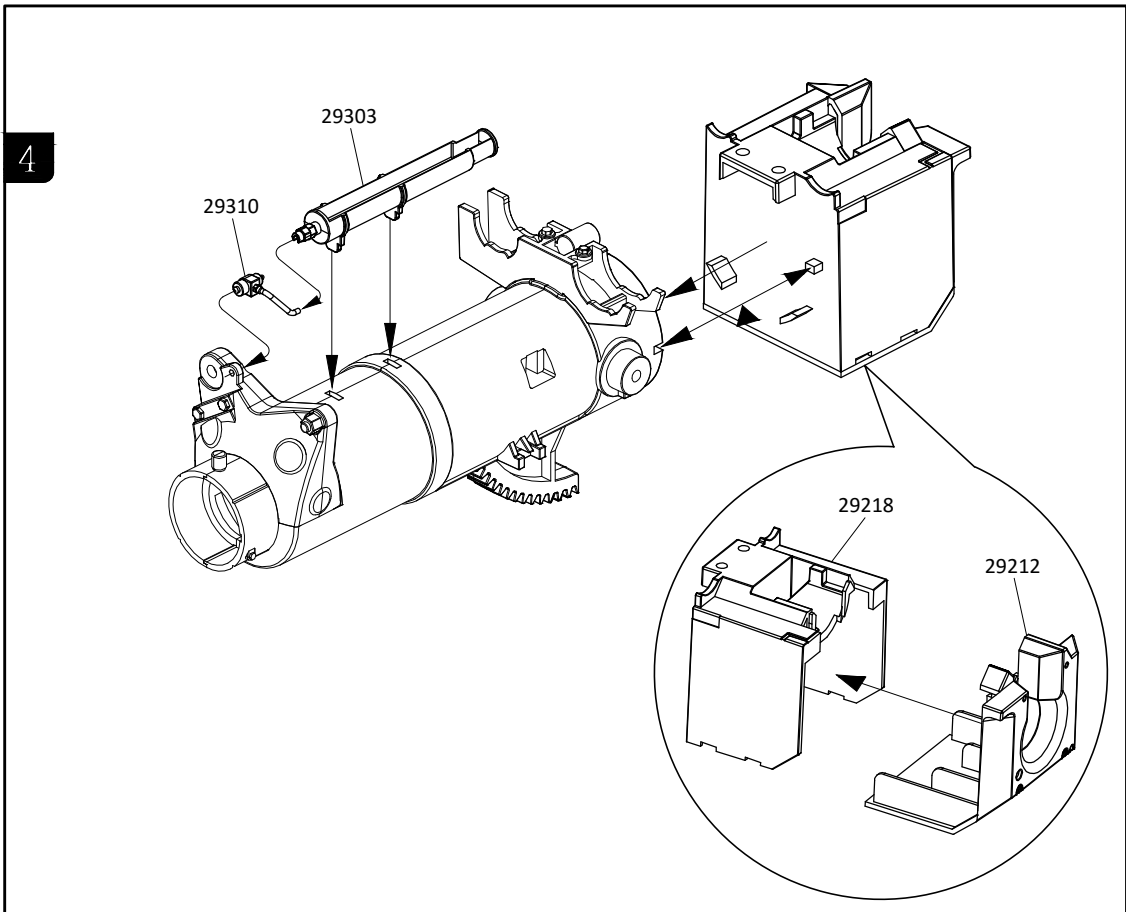
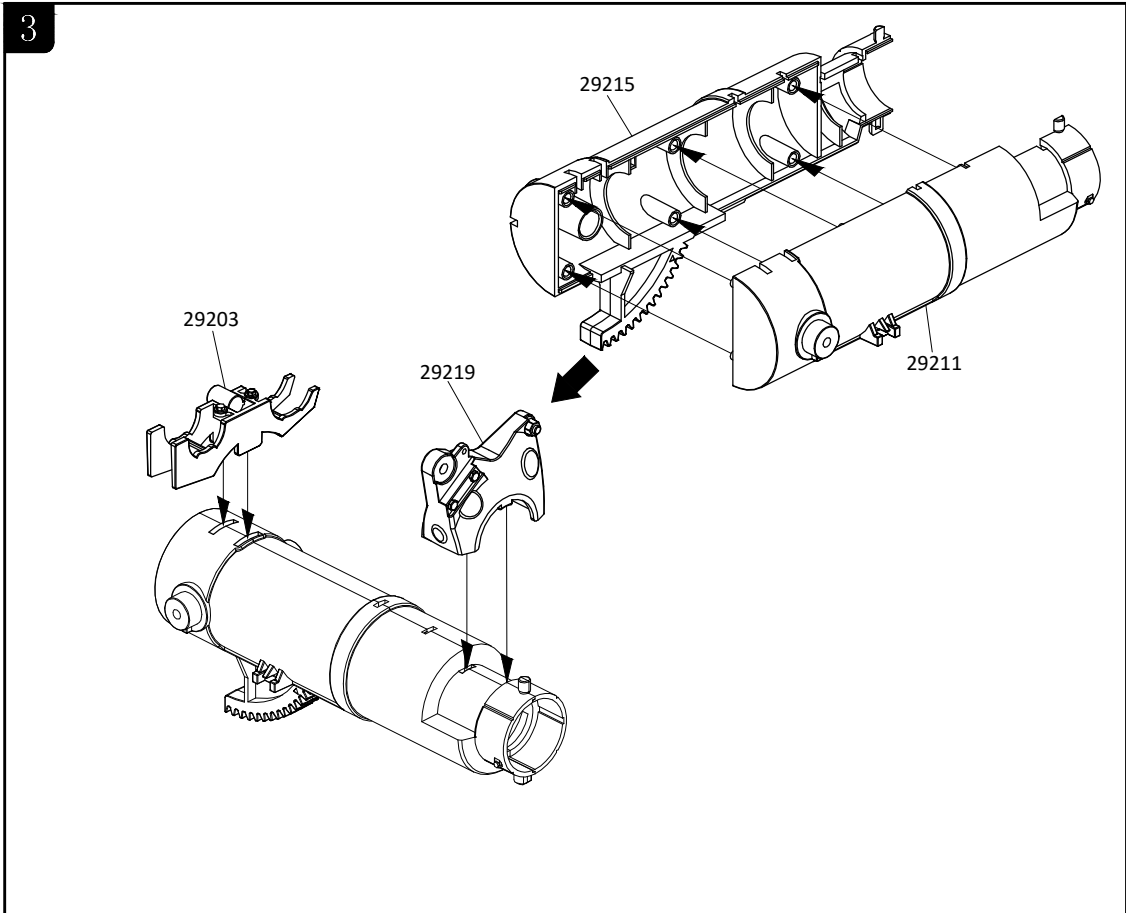


No.295

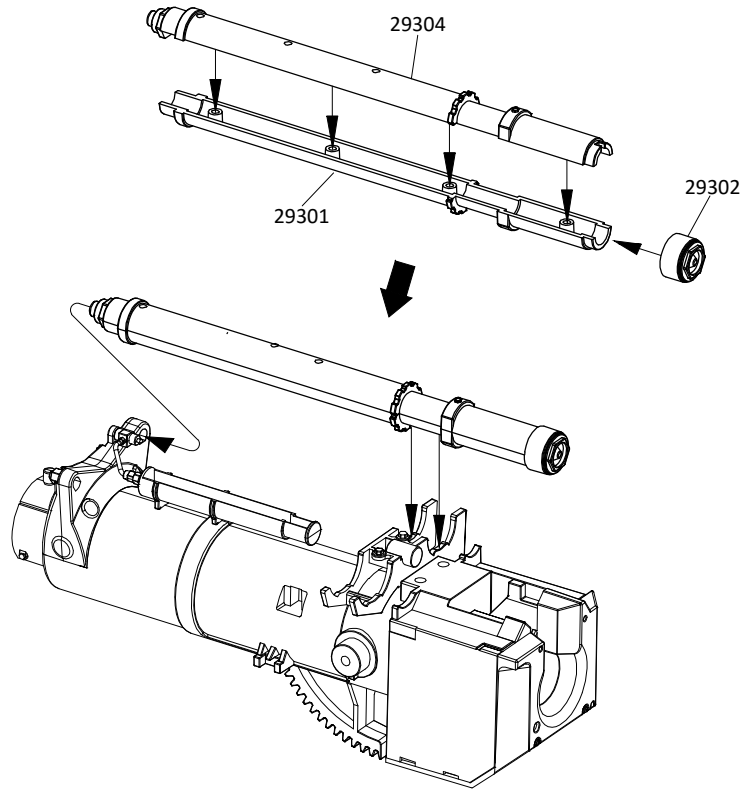


<p>No.296</p>	 <p>29602 X1</p> <p>29601 X1</p>							
<p>No.210</p>	 <p>21004 X1 21005 X1 21006 X1 21007 X1 21008 X3</p>							
<p>TIRES</p>	 <p>12102 M2 X20 11118 M2x16 X2 11103 M2x8 X20</p> <p>17003 X2 28704 X2 41346 X2 41312 X2 71050 X2 71051 X2 50007 X2</p>							
<p>BAGFA</p>	 <p>63501 X1</p> <p>41295 X1</p> <p>41171 X1</p> <p>71120 X1</p> <p>41172 X1</p> <p>41294 X1 41347 X2 30403 X2 41170 X1 71119 X1 41169 X1 30108 X1 50026 X1</p>							
<p>BAGFB</p>	 <p>11202 M2x6 X4 11207 M3x10 X4 11129 M3x55 X1 11407 M3x16 X1</p> <p>11203 M2x8 X2 11208 M3x12 X1 11123 M3x45 X1 12102 M2 X1</p> <p>11216 M2.5x6 X1 11210 M3x16 X3 11311 M3x45 X2 12103 M3 X4</p> <p>11206 M3x8 X6 11215 M3x28 X2 11122 M3x35 X1 12203 M3 X8</p> <p>17001 $\varnothing 8 \times \varnothing 6 \times 1$ X2 17002 $\varnothing 6 \times \varnothing 2.4 \times 1.8$ X1 15002 $\varnothing 5 \times \varnothing 8 \times 2.5$ X4 13003 $\varnothing 2.5 \times \varnothing 6 \times 0.4$ X1 12204 M4 X2</p>							

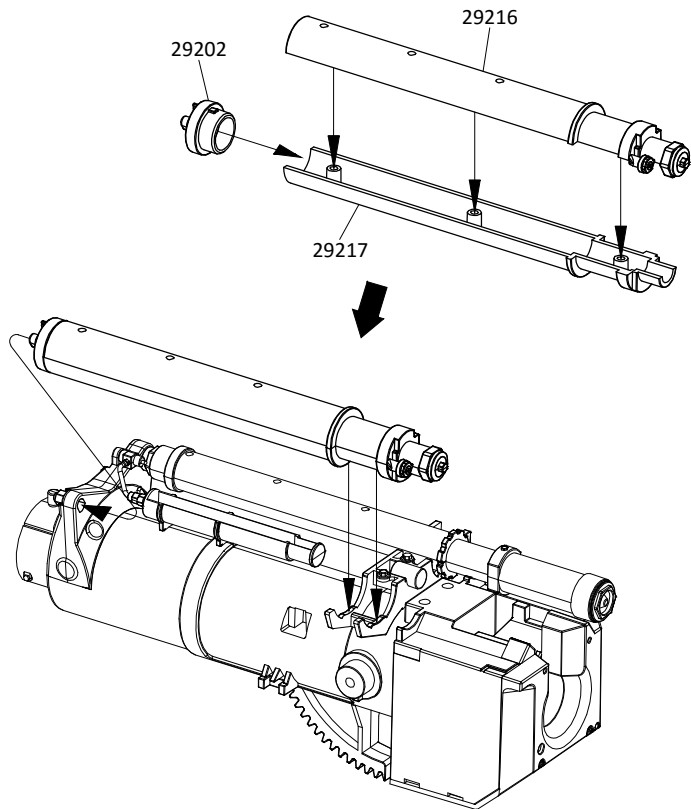
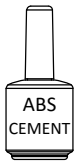


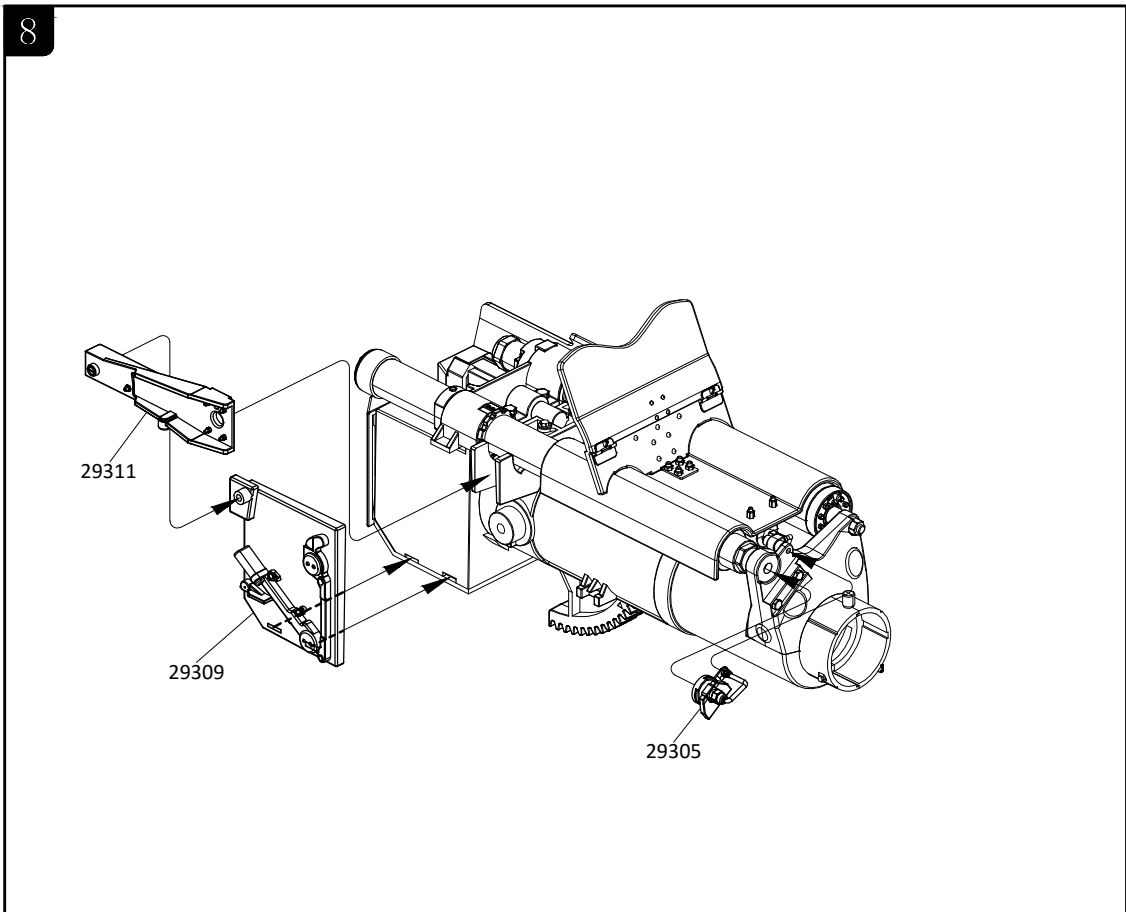
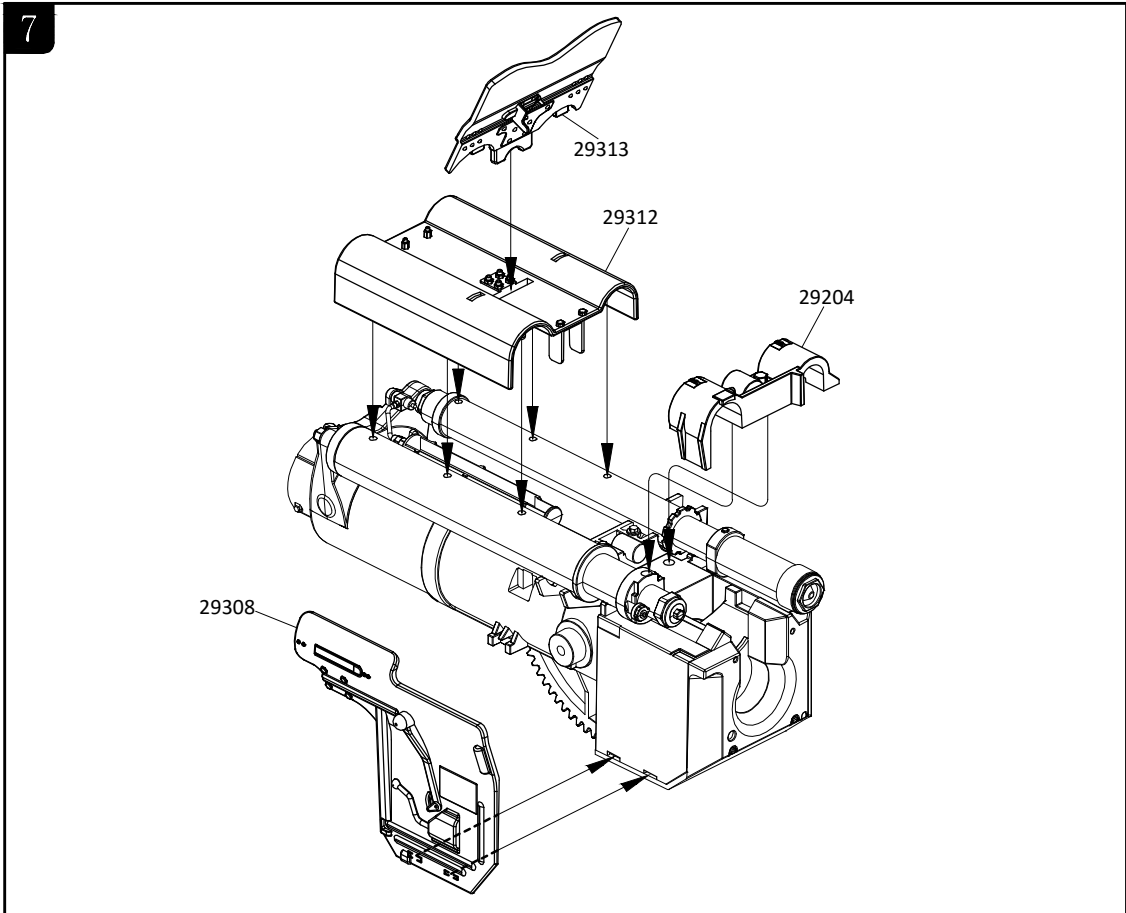


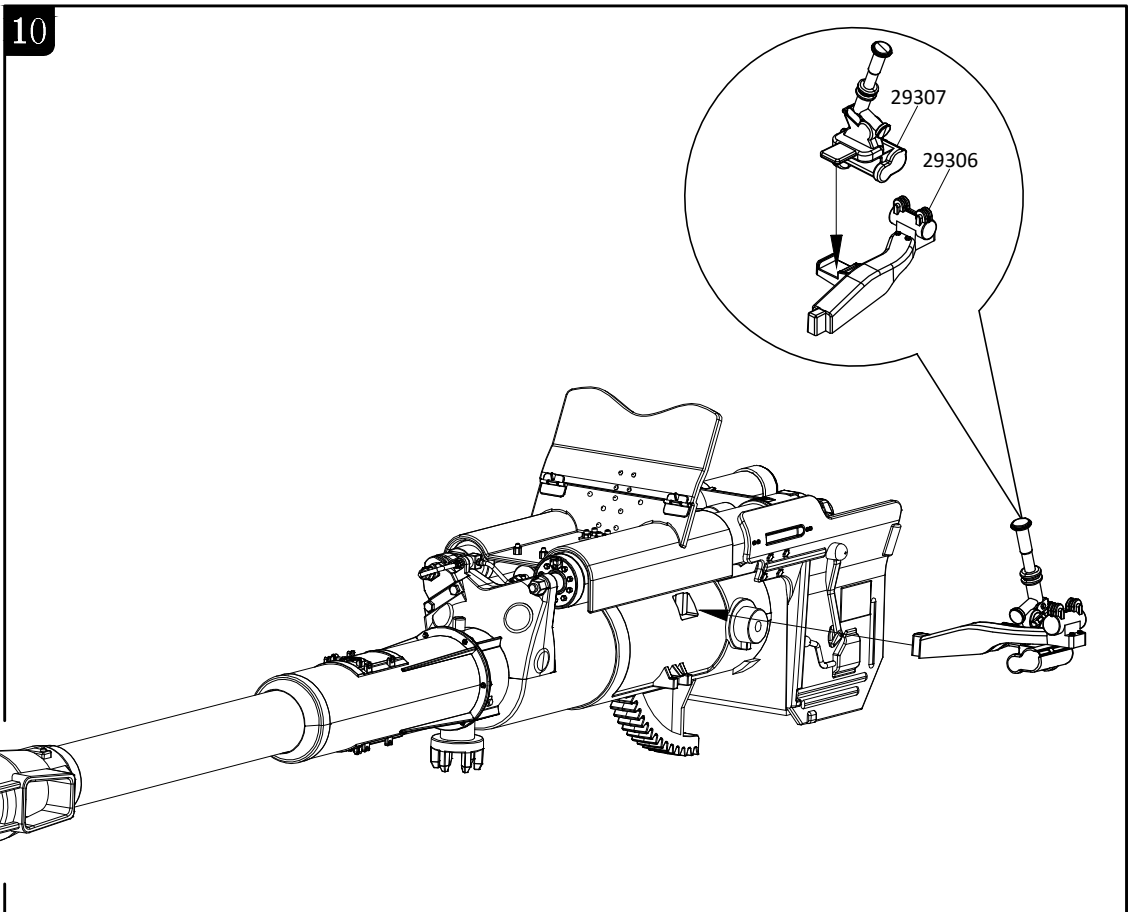
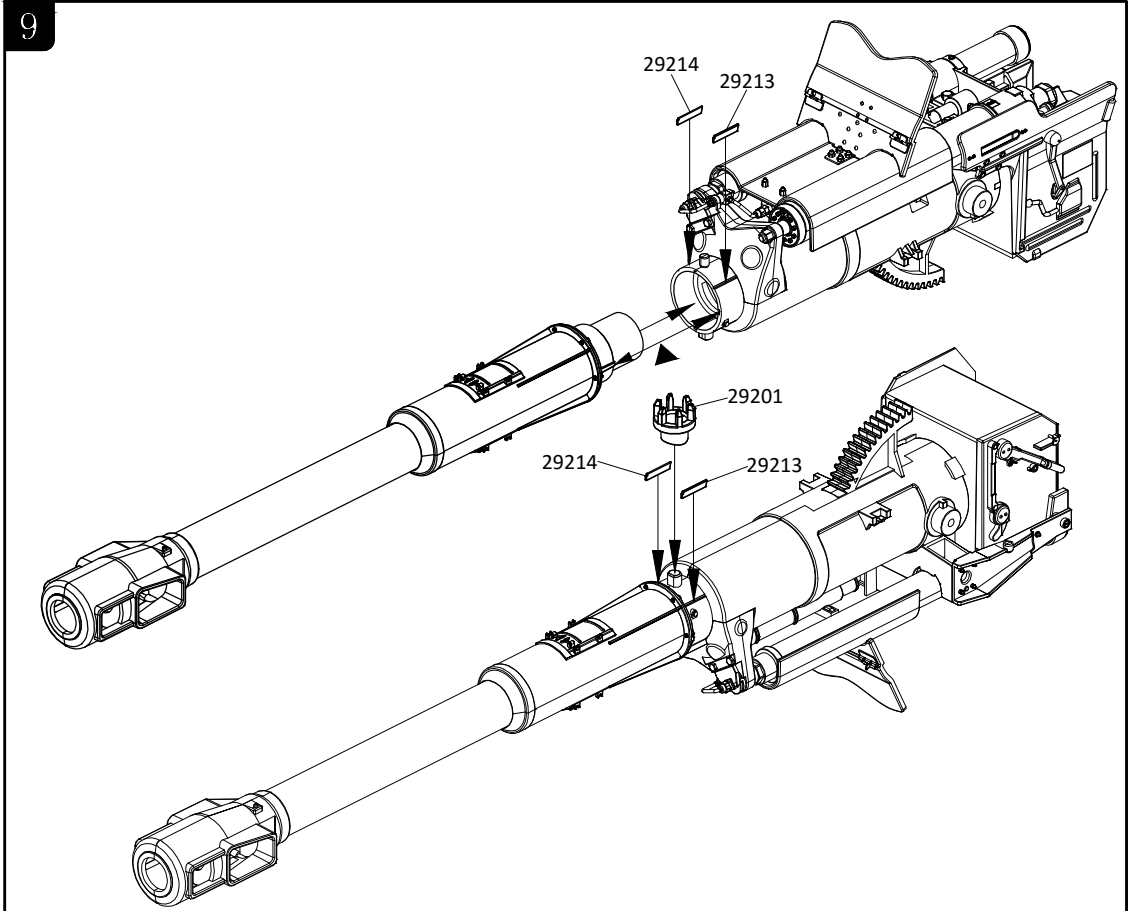
5



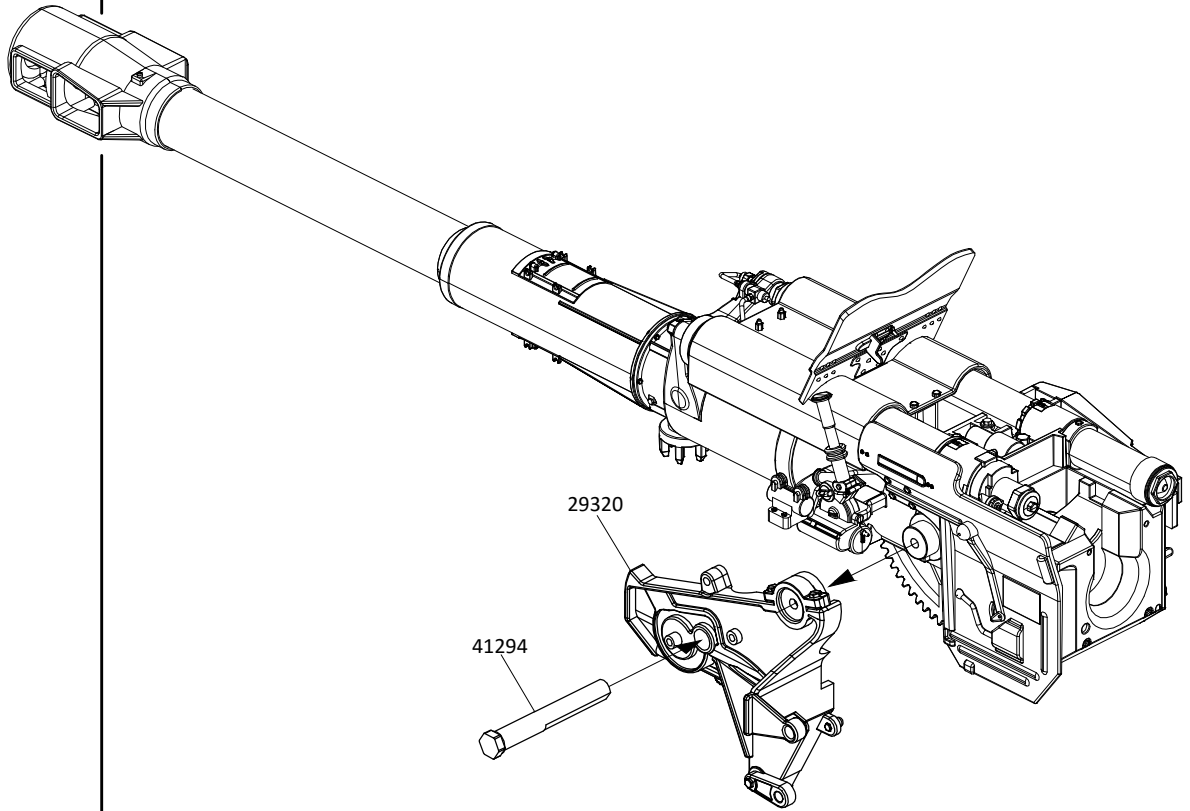
6









11

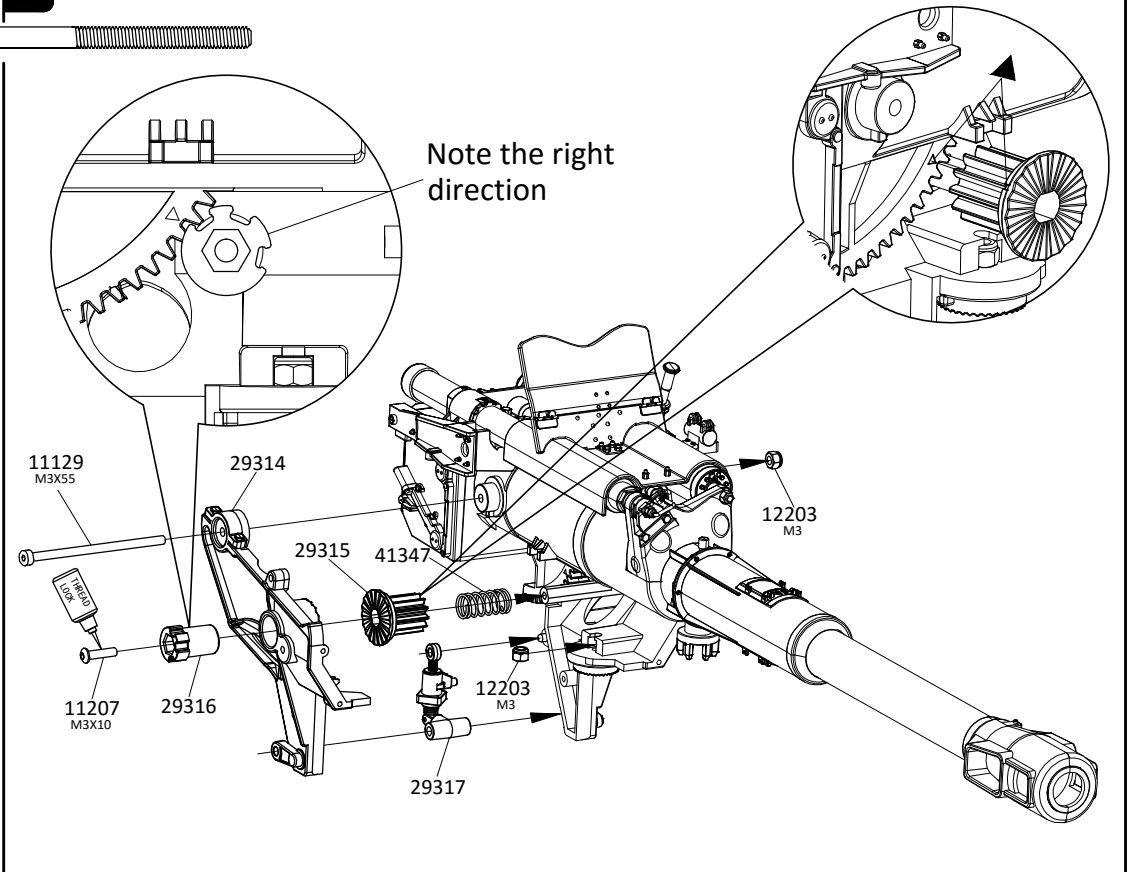


12

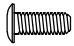
11129 
M3x55 X1


11207 
M3x10 X1

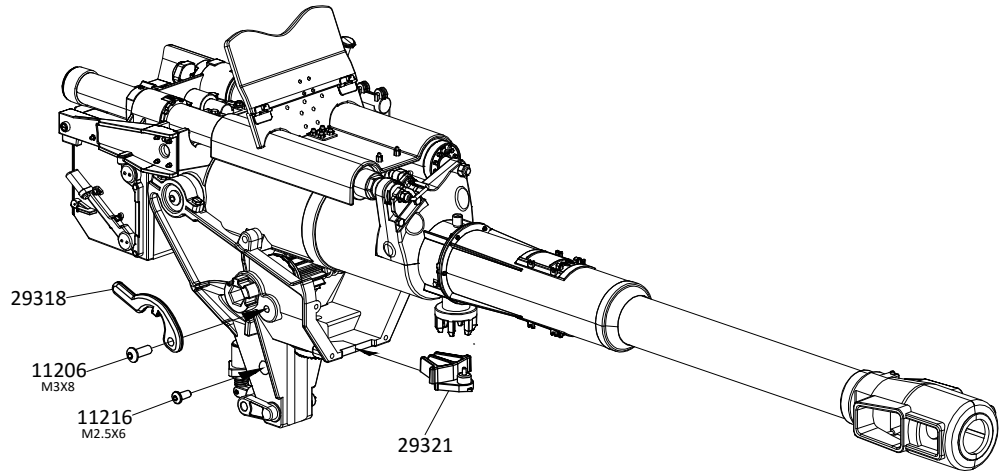
12203  
M3 X2



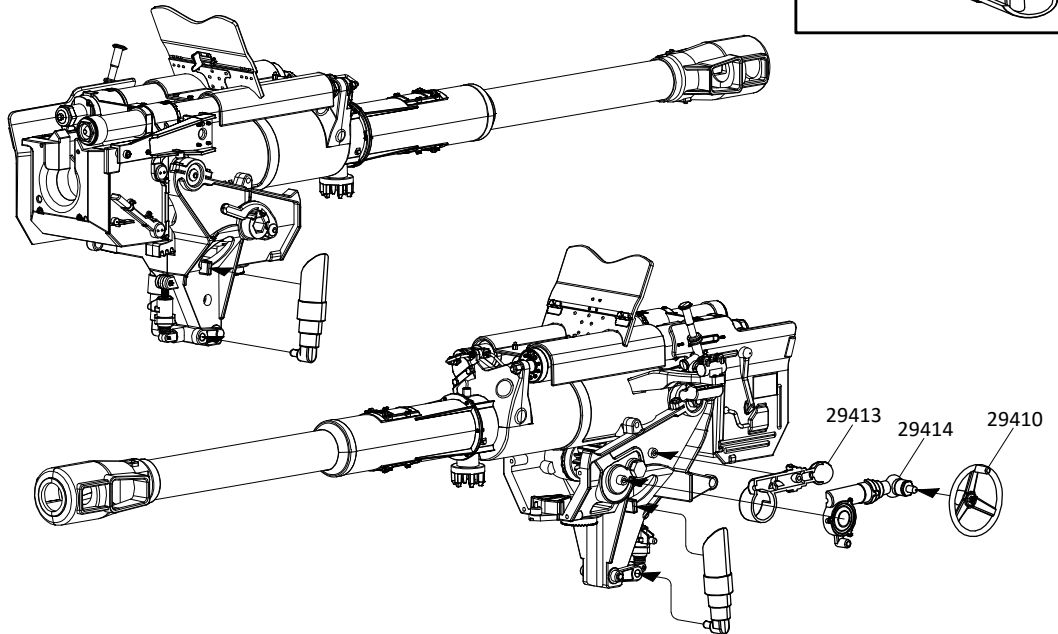
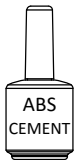
13

11206 
M3x8 X1

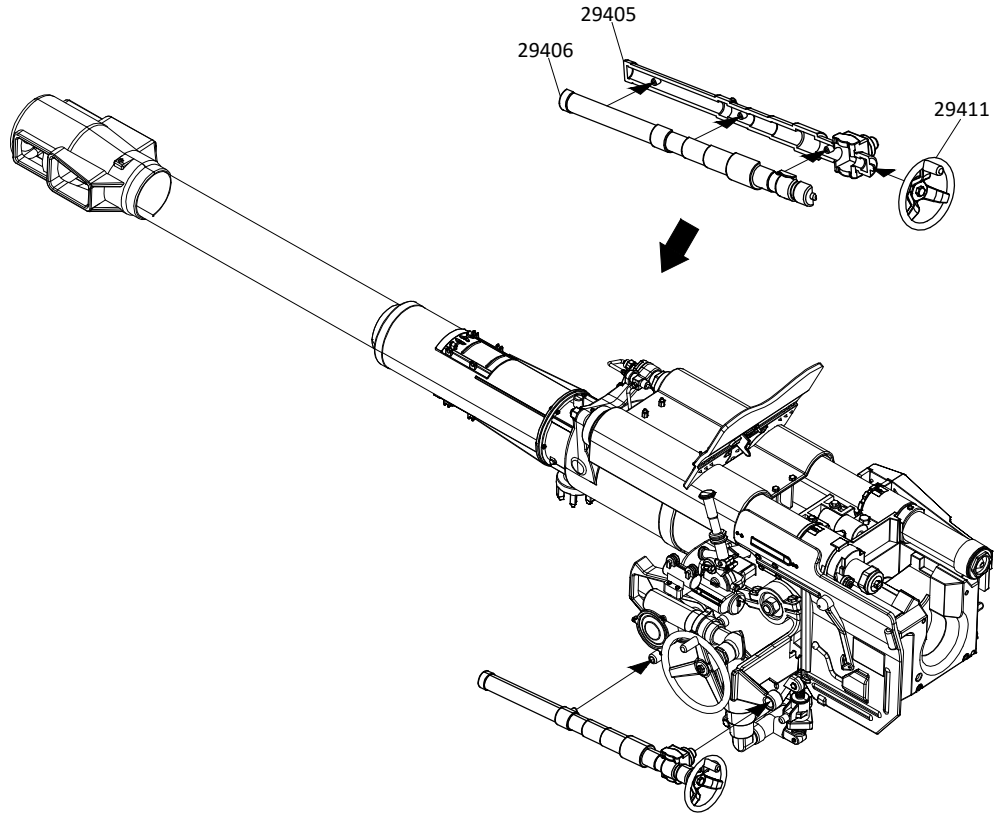
11216 
M2.5x6 X1



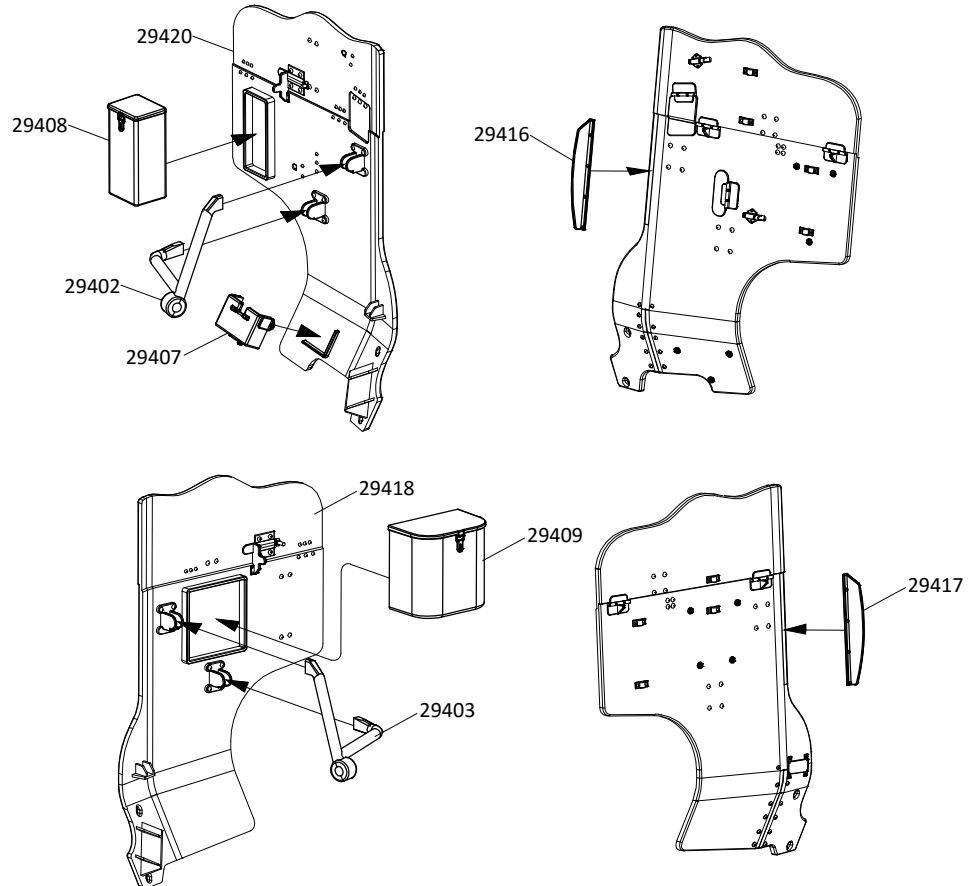
14




15




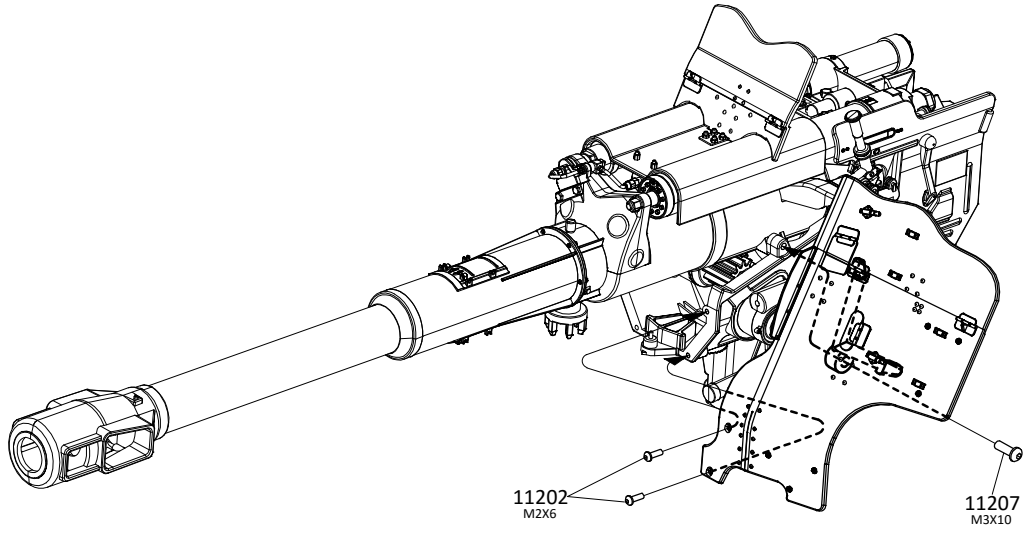
16




17


11207 
M3x10 X1

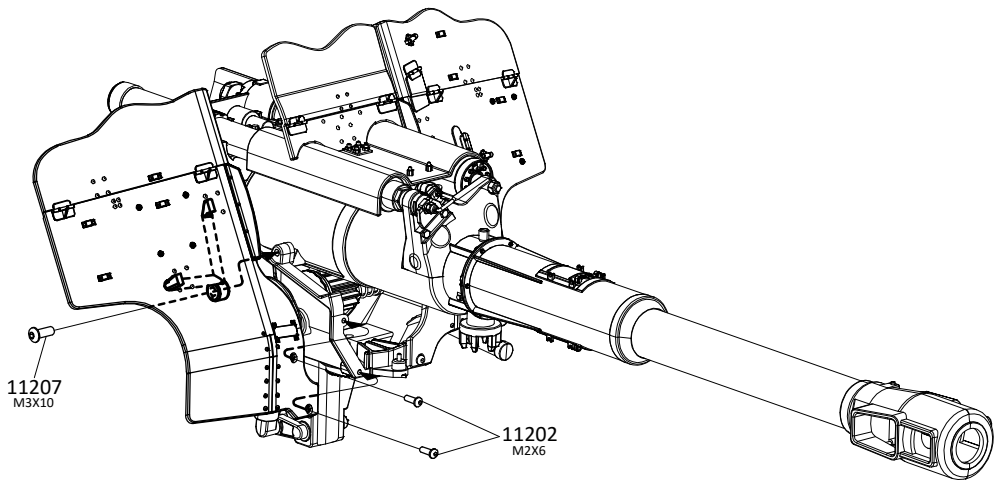
11202 
M2x6 X4







18

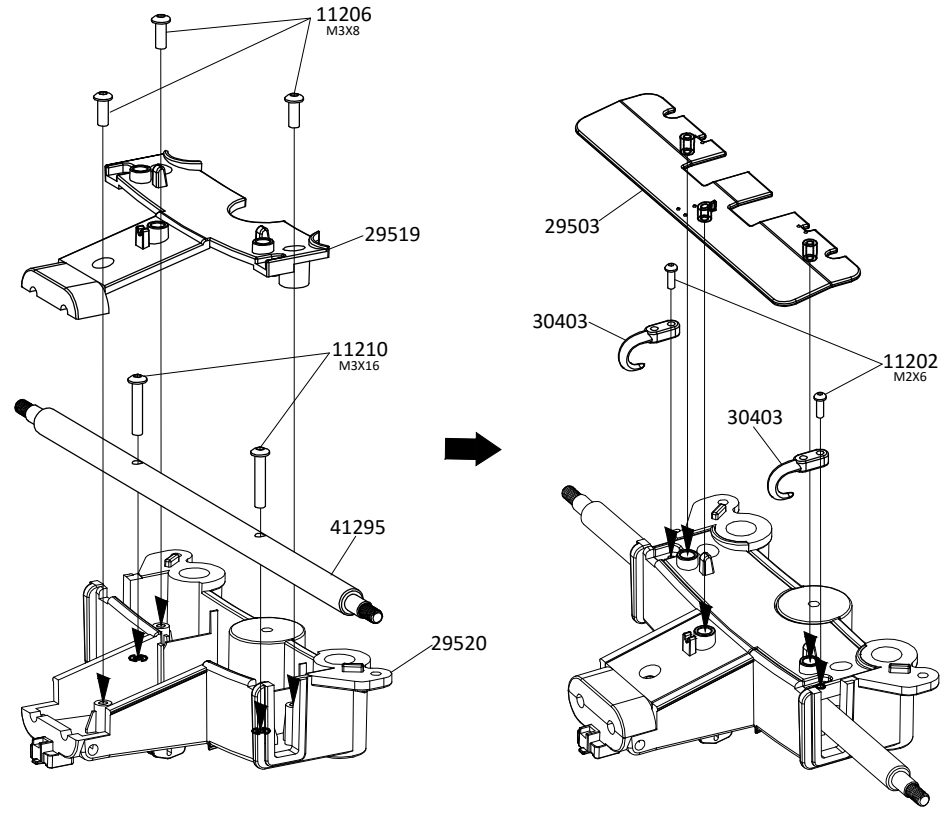
11207 
M3x10 X1

11202 
M2x6 X4



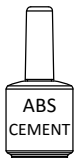


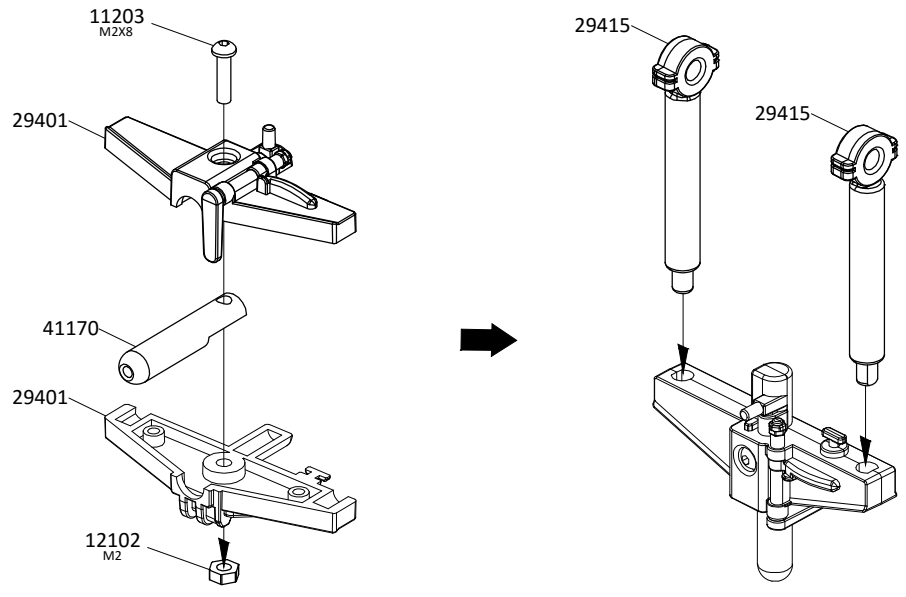
19

- 11206  M3x8 X3
 - 11210  M3x16 X2
 - 11202  M2x6 X2
- 




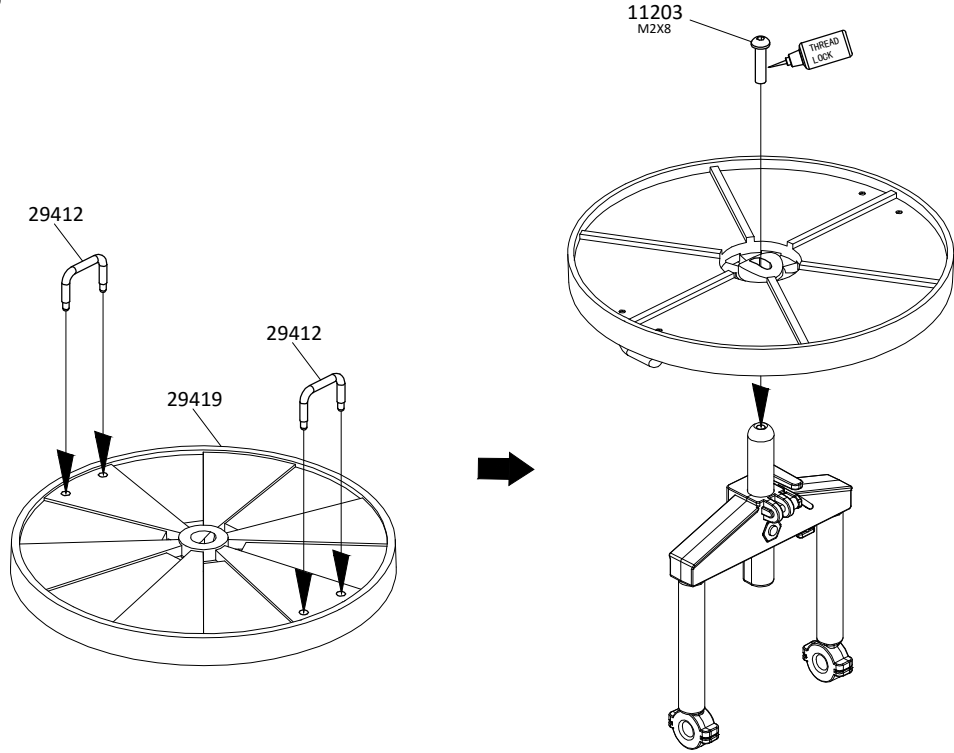
20

- 11203  M2x8 X1
 - 12102  M2 X1
- 

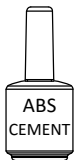



21



11203  M2x8 X1

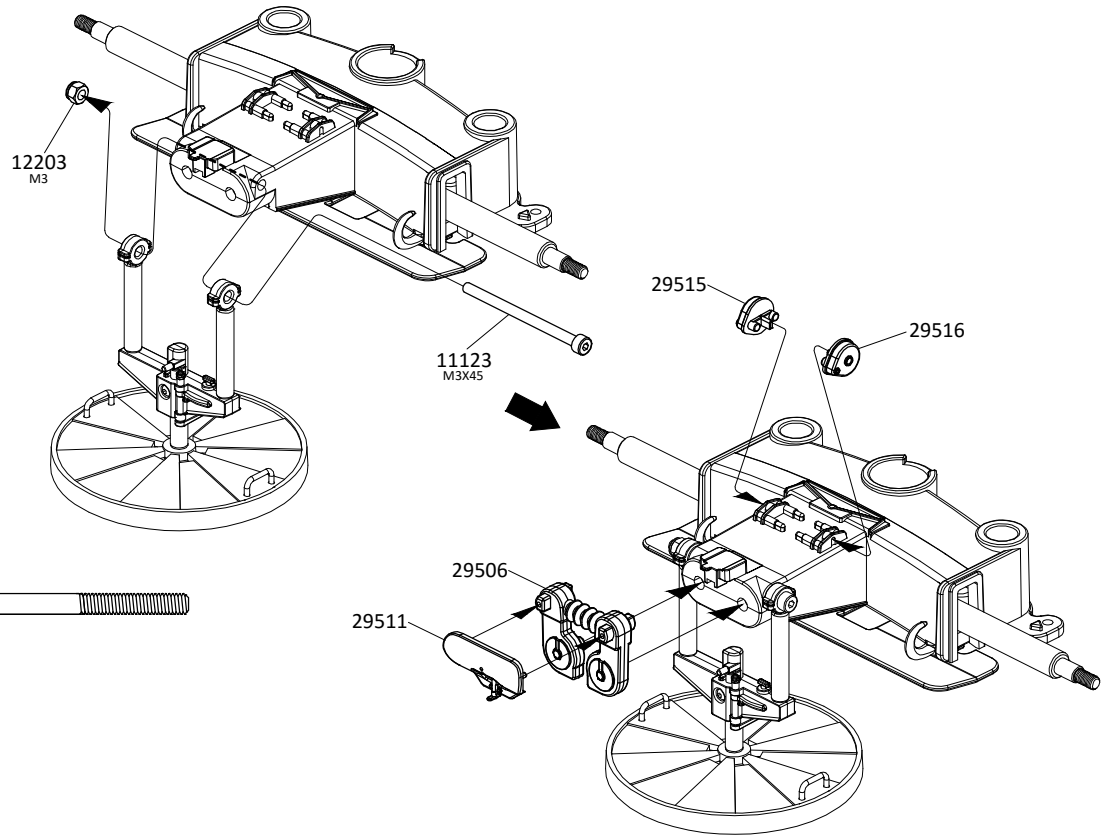


22



11123  M3x45 X1

12203   M3 X1



23

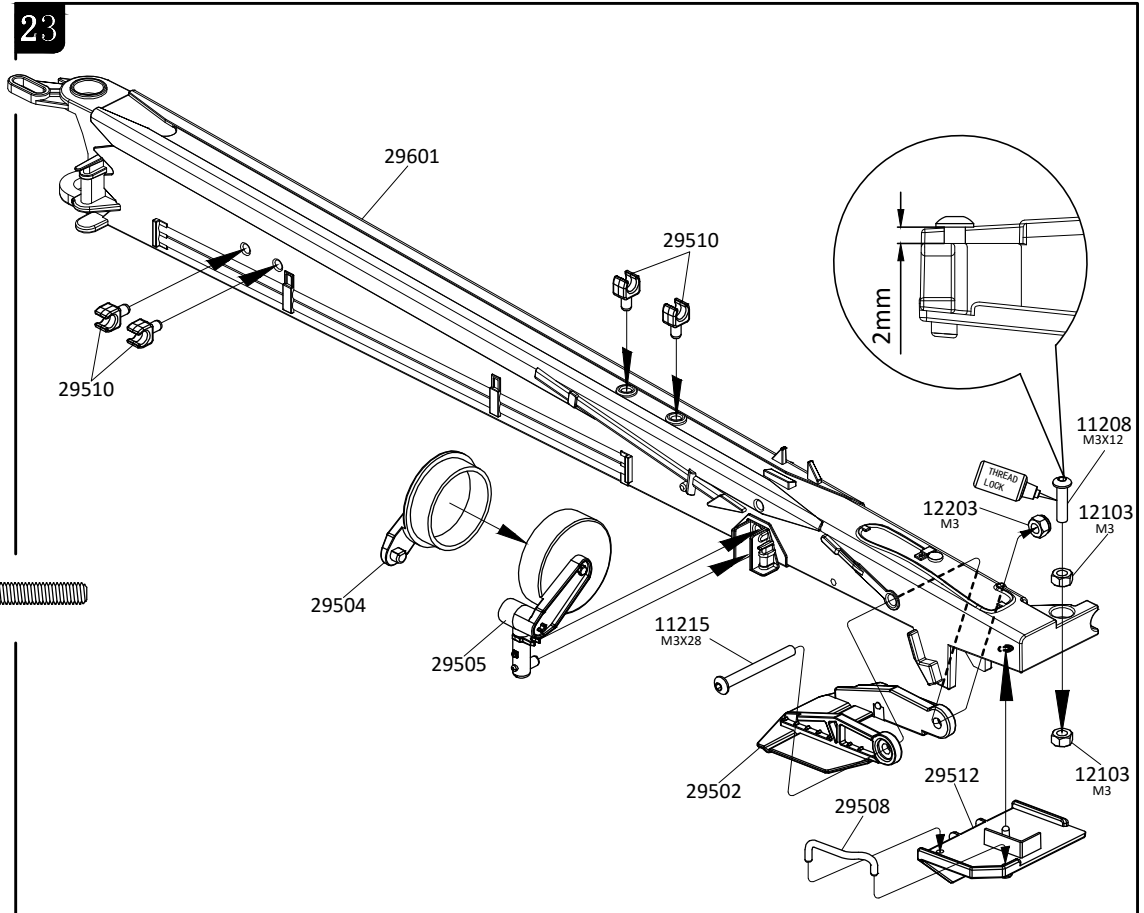


11208 M3x12 X1

11215 M3x28 X1

12103 M3 X1

12203 M3 X1



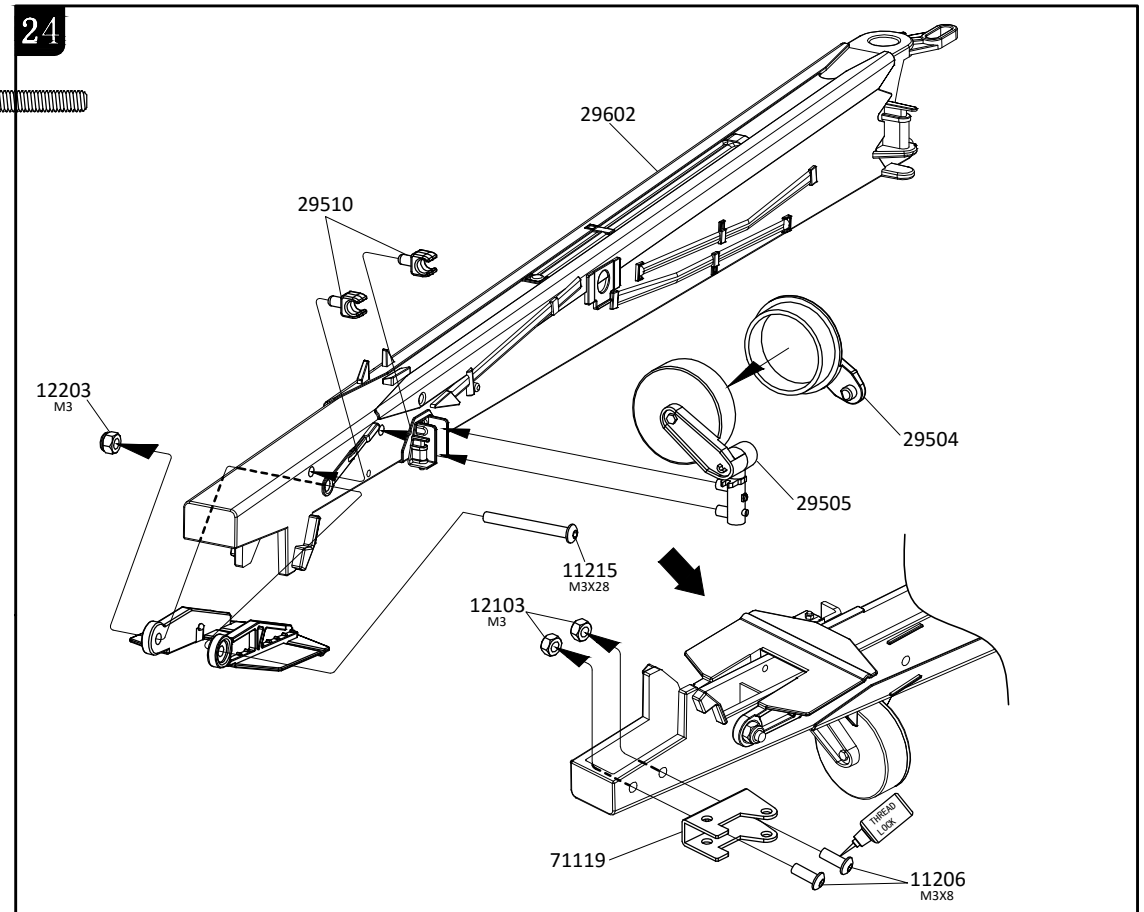
24

11215 M3x28 X1






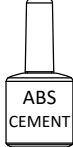
11206 M3x8 X2

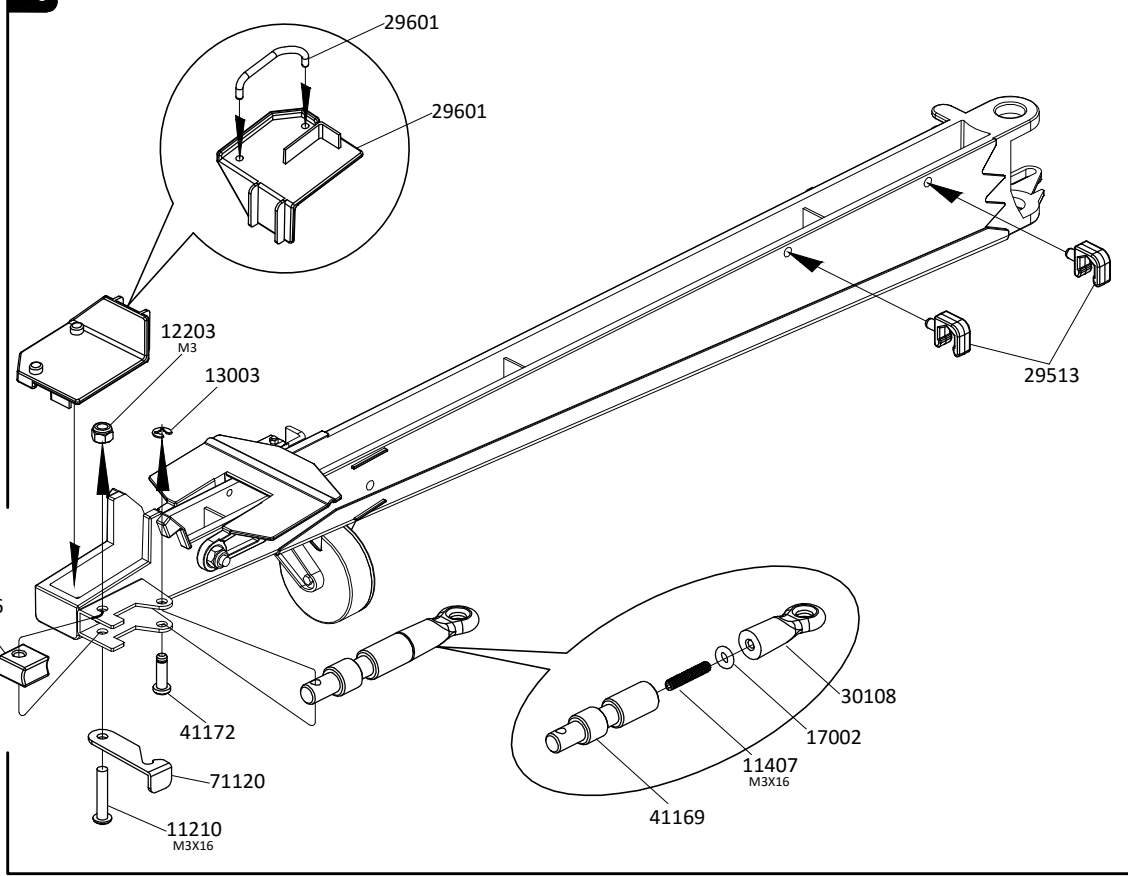
12103 M3 X2

12203 M3 X1

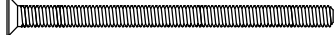



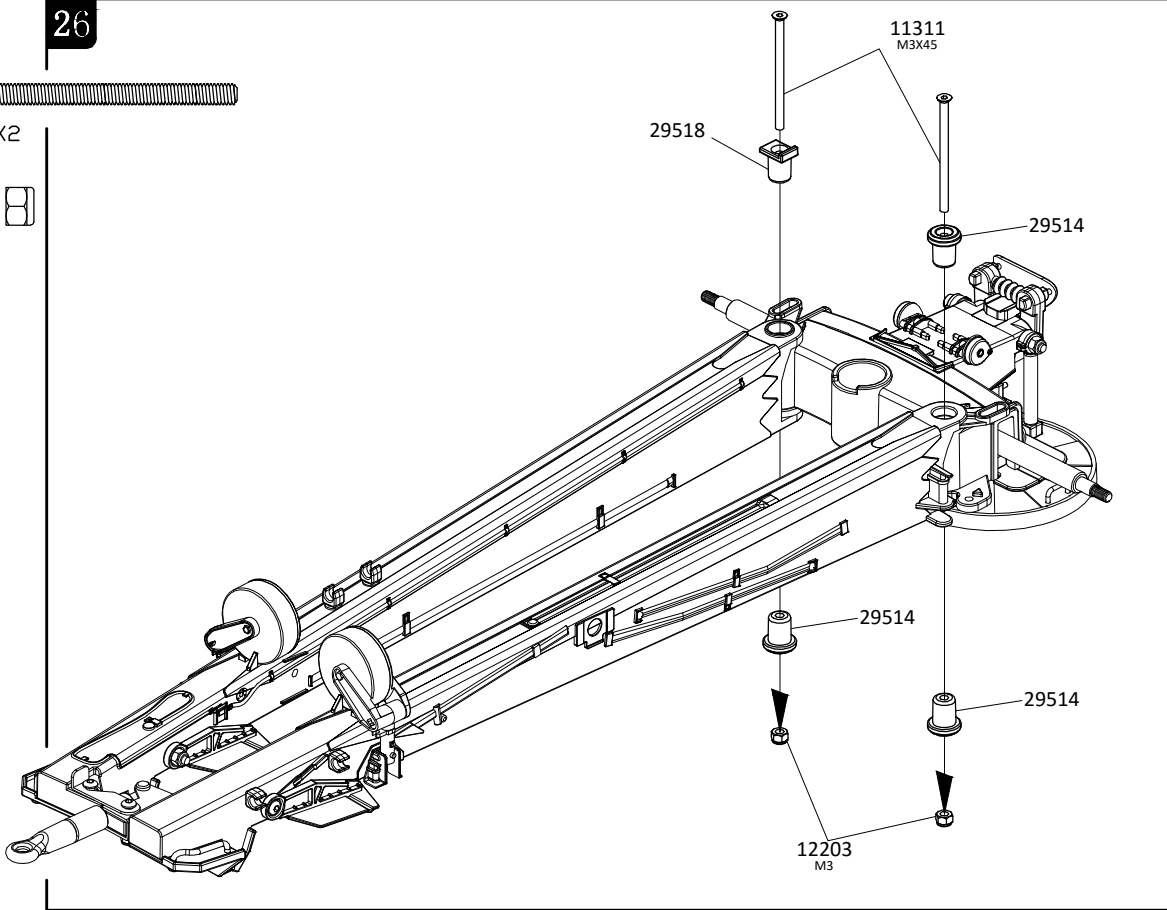
25

- 11210  M3x16 X1
 - 11407  M3x16 X1
 - 12203  M3 X1
 - 17002  $\varnothing 6 \times \varnothing 2.4 \times 1.8$ X1
 - 13003  $\varnothing 2.5 \times \varnothing 6 \times 0.4$ X1
-  ABS CEMENT




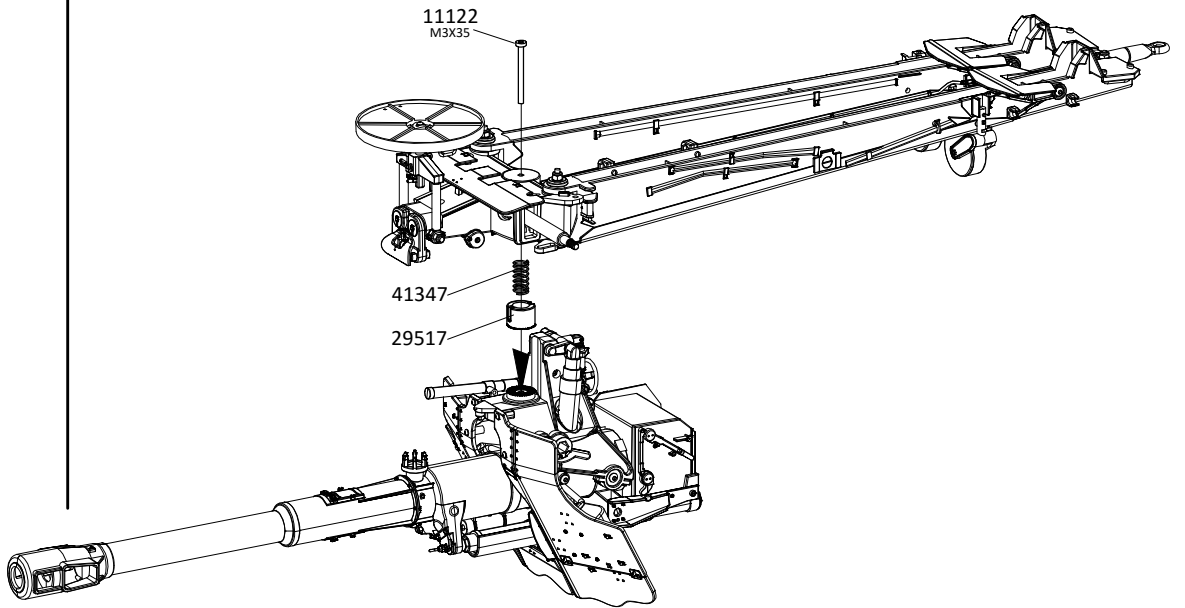
26

- 11311  M3x45 X2
- 12203  M3 X2





27

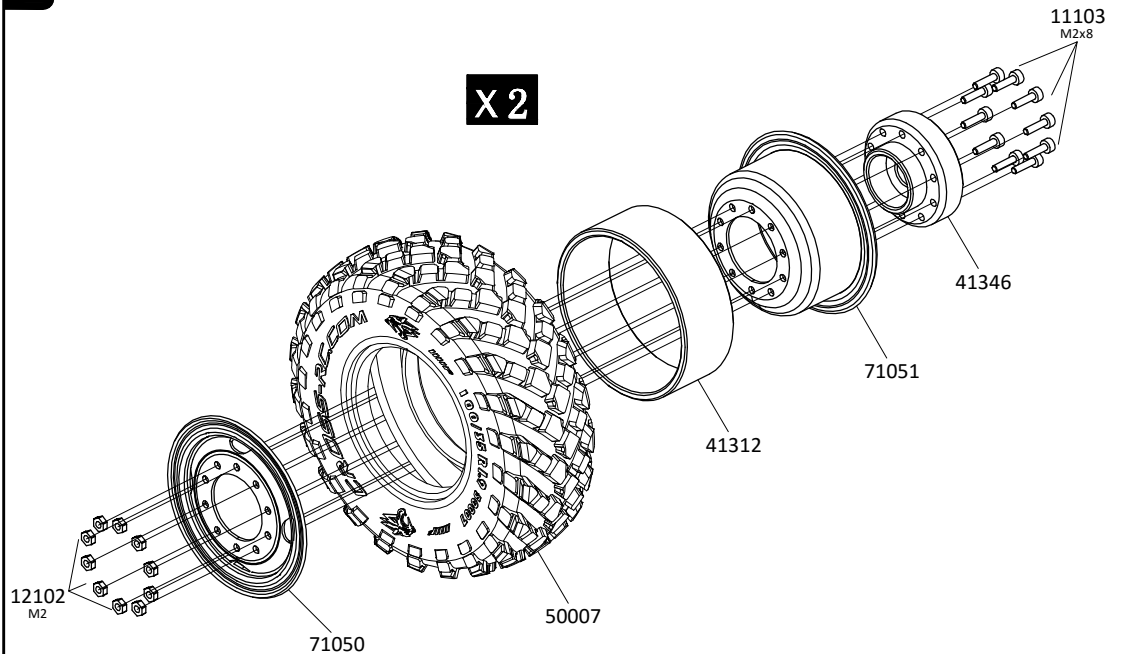
11122  M3x35 X1




28


11103  M2x8 X20


12102  M2 X20

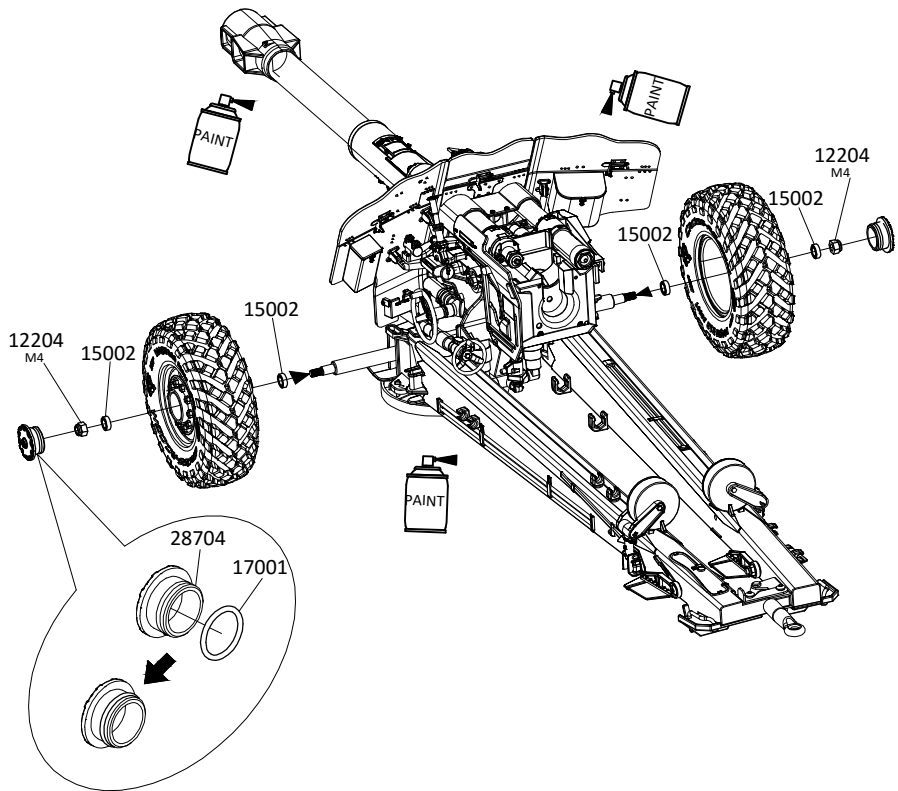


29


12204 
M4 X2

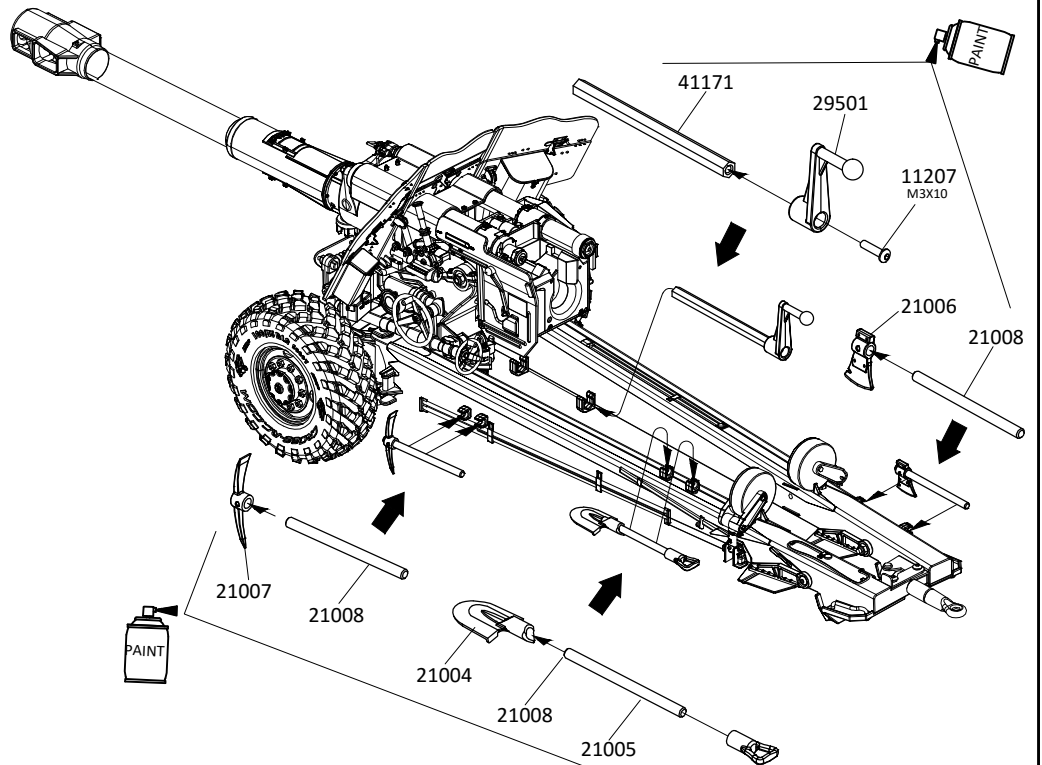
15002 
Ø5xØ8x2.5 X4

17001 
Ø8xØ6x1 X2

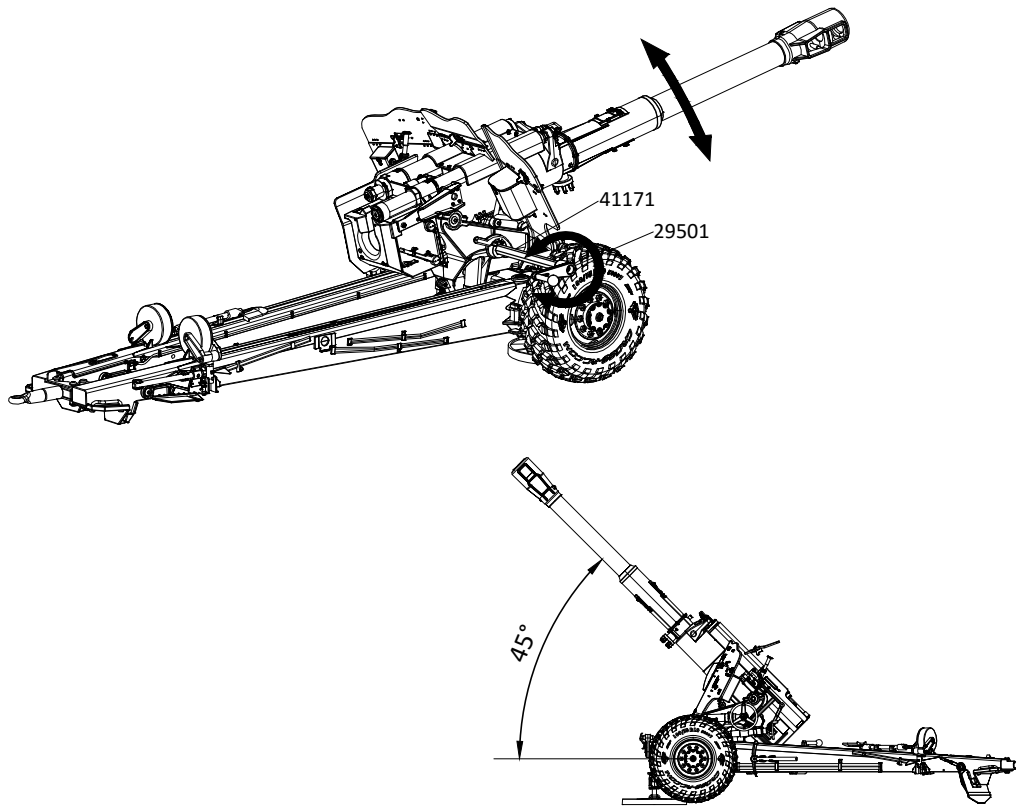


30

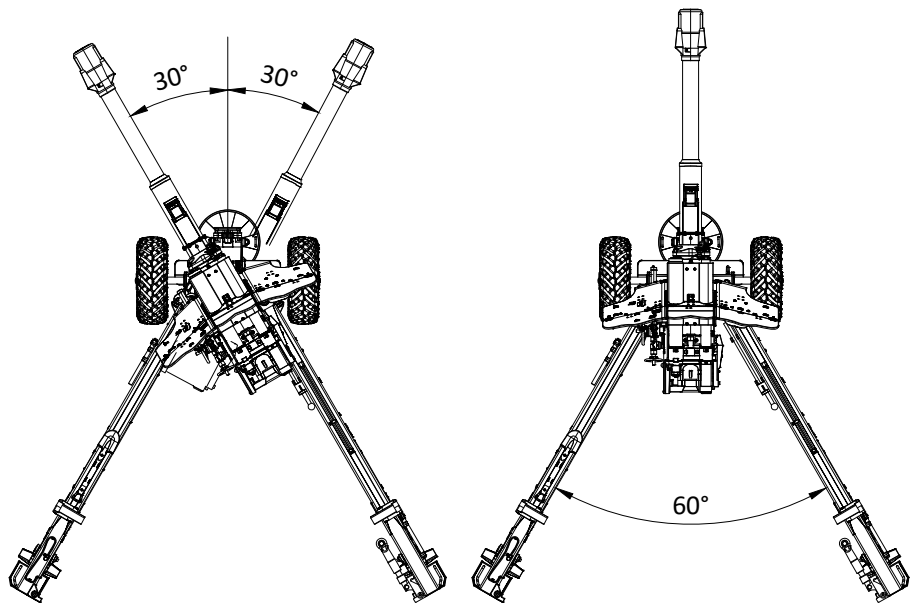
11207 
M3x10 X1



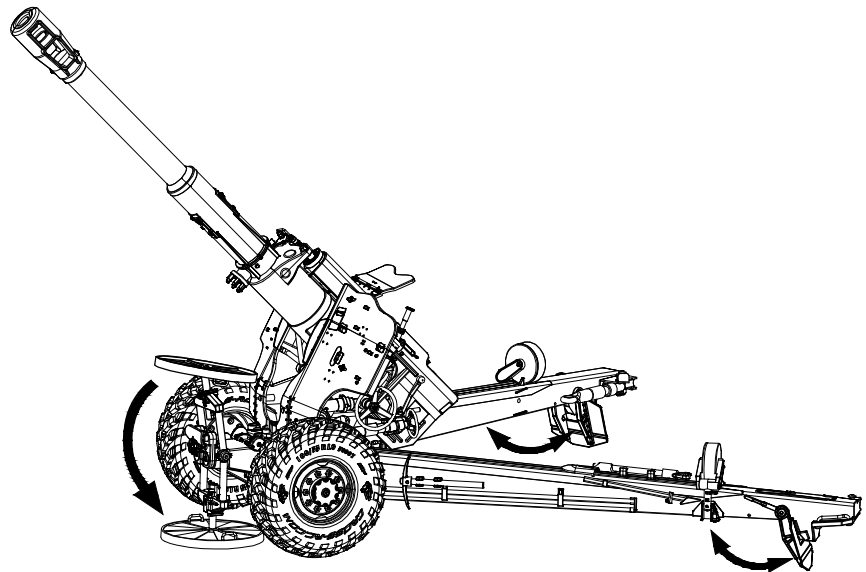
31



32



33



34

