

Donna Wilson
Autumn/Winter
2016





Welcome to Donna Wilson's wonderful woolly world! Her sense of humour, love of craft, pattern and colour is knitted into every one of her playful designs.

Donna Wilson's inspiration is drawn from her rural upbringing surrounded by the beautiful natural landscape of Aberdeenshire, Scotland. Growing up on her parents' farm is where she developed a passion for making things, mainly out of textiles and using hand-crafted techniques. Fond childhood memories of the countryside influence this latest collection.

This year delve into the forest for new faces hiding in the wild grass and tall trees, where birds soar high in the sky. Wrap up warm with a fox shawl or perhaps one of our latest yolk sweaters, proudly made in Scotland. Cuddle up with our new luxurious knitted cashmere creatures.

Cushions and blankets are woven in muted natural tones with a wink of Donna's vibrant colour palette. Find whimsical Dove and Window cushions with shapely knitted musical instruments made of the softest lambswool. There's no place like home, so make yours cosy!

Donna has always been mindful about the environment around us so has created her first collection of eco-friendly tableware. Made of bamboo fibre, the range is biodegradable yet tough enough to take on picnics and adventures.

For the grand finale, drumroll please! The circus comes to town! We welcome Magnus the Strong Man, Henrietta the Bearded Lady and Dennis the Tattooed Man to the knitted creature family.

Sustaining UK craft and traditional techniques is an important part of Donna's work. Wherever possible each Donna Wilson product is made in the UK by people who take great pride and care in their work. Donna runs a busy studio and workshop in East London. Her hardworking team knit, sew, and send out products to over 35 countries around the world.

CREATURES

All handmade in knitted lambswool with polyester filling. All sizes are measured from the longest point.



Bibi Bear
Ebony
26cm
CR-BIB-BROW



Lulu
Grey
40cm
CR-LUL-GREY



Pia Panda **NEW**
Black/White
42cm
CR-PIA-BLWH



Bunny Blue **NEW**
Blue
24cm
CR-BUN-BLUE-LA



Chuck
Chipmunk **NEW**
Brown
21cm
CR-CHU-BROW



Rill
Orange
20cm
CR-RIL-ORAN



Wolfie
Grey
31cm
CR-WOL-GREY



Cyril Squirrel Fox
Orange
37cm
CR-CYR-ORAN



Larry Ladybird
Red/Black
20cm
CR-LAR-RED



Charlie Monkey
Grey
55cm
CR-CHA-GREY



Mono Cat
Black/White
24cm
CR-MON-BLAC



Ginge Cat
Peach
24cm
CR-GIN-PEAC



Ziggy Cat
Mustard
24cm
CR-ZIGG-MUST





Spike Cactus **NEW**
Green
52cm
CR-SPI-GREE



Kiki Cactus **NEW**
Green/Pink
26cm
CR-KIK-GREE



Henrietta the
Bearded Lady **NEW**
Brown
40cm
CR-HENR-BROW



Magnus the
Strong Man **NEW**
Beige
40cm
CR-MAGN-BEIG



Dennis the
Tattooed Man **NEW**
Blue
48cm
CR-DENN-BLUE



George
Cashmere Teddy
Brown
40cm
CR-GEO-BROW



Egbert Cashmere
Elephant **NEW**
Grey
W 28cm
CR-ELE-CASH



Wilhelmina
Cashmere Wolf
NEW
Grey
W 27cm
CR-WOLF-CASH



Cashmere Grass
NEW
Green
H 21cm
CR-GRAS-CASH



Cashmere Tuft **NEW**
H 18cm
CR-TUFT-CASH



Maurice Ted
Brown/Blue
39cm
CR-TED-MAU



Big Ted
Brown/Black
85cm
CR-TED-BRBL



Mini Giants
Multi
85cm
CR-MINI-CREA



Giant Creatures
Made to order
CR-BIG-CREA

WOVEN CUSHIONS

Knitted or woven in
100% lambswool.
Includes feather pad.



Monkey Woven
Cushion **NEW**
Grey/White
31 x 31cm
CU-MON-GR



Wolf Woven
Cushion **NEW**
Grey/White
31 x 60cm
CU-WOLF-GRWH



Window Cushion
NEW
Gold
42 x 42cm
CU-WIND-GOLD



Window Cushion
NEW
Mustard
42 x 42cm
CU-WIND-MUST



Window Cushion
NEW
Pink
42 x 42cm
CU-WIND-PINK



Dotty Cushion **NEW**
Gold
42 x 42cm
CU-DOT-GOLD



Dotty Cushion **NEW**
Mustard
42 x 42cm
CU-DOT-MUST



Dotty Cushion **NEW**
Pink
42 x 42cm
CU-DOT-PINK



Mountain Moon
Woven Cushion
Black/White
48 x 48cm
CU-MOU-BLWH-W



Forest Woven
Cushion
Black/White
48 x 48cm
CU-FOR-BLWH-W



Woodpecker
Cushion **NEW**
Mustard/Oatmeal
42 x 42cm
CU-WOOD-OATM



Woodpecker
Cushion **NEW**
Pink/White
42 x 42cm
CU-WOOD-WHIT



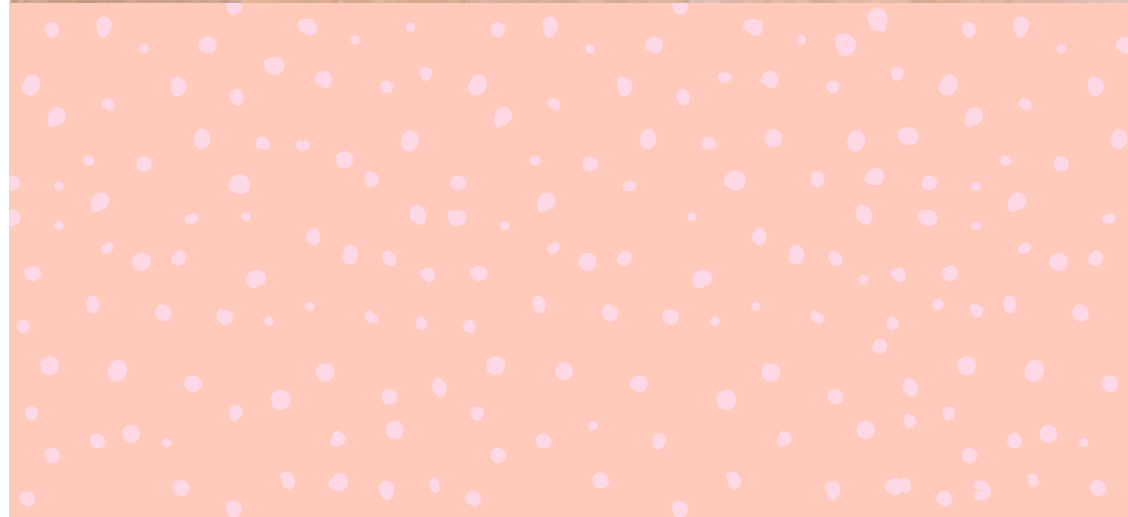
Dove Cushion **NEW**
Grey
48 x 48cm
CU-DOVE-GREY



Dove Cushion **NEW**
Green
48 x 48cm
CU-DOVE-GREE



Dove Cushion **NEW**
Mustard
48 x 48cm
CU-DOVE-MUST



BLANKETS & TROWS

Luxurious woven
100% lambswool.



Beardy Man Throw
NEW
Oatmeal/Brown
190 x 145cm
BL-BEA-BROW



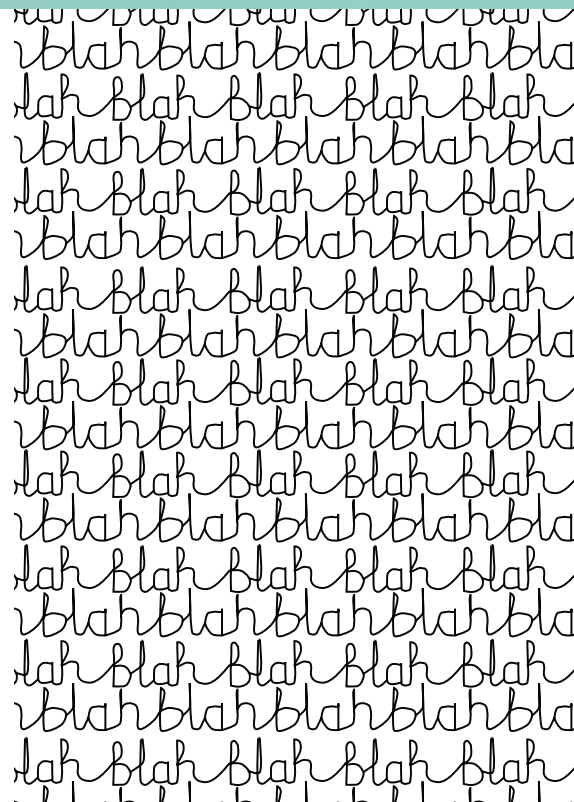
Menagerie Throw
NEW
Grey/White
190 x 145cm
BL-MENA-GRWH



Forest Throw
Black /White
190 X 145CM
BL-TRE-BLWH



Blah Blah Throw
190 x 145cm
White/Black
BL-BLA-WHBA



Allsorts Large
Throw
Multi
190 x 145cm
BL-ALL-MULT



Allsorts Large
Throw
Black/White
190 x 145cm
BL-ALL-BLWH

SHAPED CUSHIONS

All knitted 100% lambswool with polyester stuffing.



Cloud Cushions
Small 26cm
Medium 60cm
Large 80cm

Blue
CU-CLO-BLUE
Grey
CU-CLO-GREY

Pink
CU-CLO-PINK-
White
CU-CLO-WHIT



Guitar Cushion
NEW
Brown/Gold
66cm
CU-GUIT-BROW



Horn Cushion
NEW
Gold
57cm
CU-HORN-GOLD



Xylophone
Cushion NEW
Multi
43cm
CU-XYLO-MULT



Oak Leaf Tree
Green/Olive
Small 32cm
CU-TRE-ROUND-SX

Oak Leaf Tree
Green/Olive
Large 55cm
CU-TRE-ROUN-LX



Giant House
Cushion
Oatmeal/Blue
65 x 60cm
CU-HOU-OABL-LX



HOT WATER BOTTLES

Covers knitted in 100% lambswool. Hot water bottle included.



WILD THINGS

Corduroy with polyester stuffing. All measurements are from the longest point.



Message In A Bottle Hot Water Bottle
Blue/Red
36 x 22cm
HB-BOA-BLRE



Message In A Bottle Hot Water Bottle
Pale Green/Blue
36 x 22cm
HB-BOA-PGBL



Finn Hot Water Bottle
Blue
32 x 22cm
HB-FINN-BLUE



Finn Hot Water Bottle
Grey/White
32 x 22cm
HB-FINN-GRWH



Feeble Frog **NEW**
23cm
Green
TO-FROG-GR



Meddling Monkey
NEW
22cm
Orange
TO-MONK-OR



Party Parrot **NEW**
22cm
Red
TO-PARR-RE



Awkward Aardvark **NEW**
99cm
Grey/Pink
TO-AARD-PI



Dougal Hot Water Bottle
36 x 22cm
HB-FACE-DOU



Miriam Hot Water Bottle
36 x 22cm
HB-FACE-MIR



Curious Capybara Bean Bag
55cm
Orange
TO-CAPY-MUST



Wiggly Whale Bean Bag
65cm
Blue
TO-WHAL-BLUE



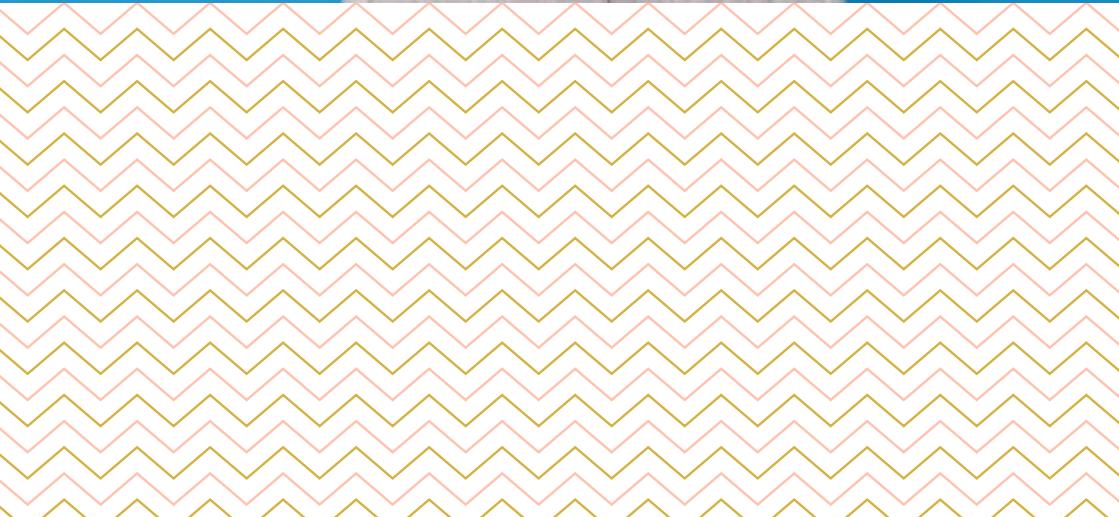
Clumsy Caribou Toy
60cm
Brown
TO-CARI-BROW



Feisty Fox Toy
55cm
Orange
TO-FOX-ORAN

KID'S HATS, SCARVES
& GLOVES

All 100% knitted lambswool.
Made in Scotland.



Kid's Naughty Nice
Scarf **NEW**
Grey/Pink
121 x 13cm
SC-NAU-GRPI



Kid's Naughty Nice
Scarf **NEW**
Green/Gold
121 x 13cm
SC-NAU-GRGO



Kid's Naughty Nice
Hat **NEW**
Grey/Pink
One size
HA-NAU-GRPI



Kid's Naughty Nice
Hat **NEW**
Green/Gold
One size
HA-NAU-GRGO



Kid's Zig Zag Mitts
Green/Blue
15.5cm
GL-ZIG-GRBL-KI



Kid's Zig Zag Mitts
Mint/Peach
15.5cm
GL-ZIG-MIPE-KI



Kid's Zig Zag Mitts
Mustard/Blue
15.5cm
GL-ZIG-MUPE-KI



Kid's Zig Zag Mitts
Red/Pink
15.5cm
GL-ZIG-REPI-KI



Snake Scarf **NEW**
+ Kids & Adults
Mint/Peach
133 x 6.5cm
SC-SNA-MINT



Snake Scarf **NEW**
+ Kids & Adults
Mustard/Peach
133 x 6.5cm
SC-SNA-MUST



Kid's Bobble Head
Scarf **NEW**
Red/Pink
127 x 12cm
SC-BOB-REPI



Kid's Bobble Head
Scarf **NEW**
Green/Blue
127 x 12cm
SC-BOB-GRBL



Kid's Bobble Head
Hat **NEW**
Red/Pink
One size
HA-BOB-REPI



Kid's Bobble Head
Hat **NEW**
Green/Blue
One size
HA-BOB-GRBL



Little Red
Cashmere Hat
Red
0-3 Months
HA-LITT-RED-KI



Tiger Scarf
Orange
14 x 108 cm
SC-TIG-ORAN-XX



Tiger Scarf
White
14 x 108 cm
SC-TIG-WHIT-XX



Make Your Own
Monster Kit
KI-MYO-MONS

Make Your Own
Magpie Kit
KI-MYO-MAGP

Alphabet Poster
A1
ST-ALP-POST



Sew on Patches **NEW**
(Set of 7)
Assorted
ST-PATCH-SEW

MINI BLANKETS

100% lambwool.
Made in Scotland.



Mini-Blanket Bear
NEW
Blue/Gold
85 x 56cm
MB-BEAR-GRGO



Mini-Blanket Bear
NEW
Grey/White
85 x 56cm
MB-BEAR-GRWH



Mini-Blanket Bear
NEW
Oatmeal/Brown
85 x 56cm
MB-BEAR-OABR



Mini-Blanket
House NEW
Pink/Green
85 x 56cm
MB-HOU-PIGR



Mini-Blanket
House NEW
Oatmeal/Brown
85 x 56cm
MB-HOU-OANA



Mini-Blanket
House NEW
Red/Olive
85 x 56cm
MB-HOU-BLGR



Rainy Day Mini
Blanket
Blue/White
95 x 62cm
MB-RAI-BLWH



Rainy Day Mini
Blanket
Camel/Mustard
95 x 62cm
MB-RAI-CAMU



Rainy Day Mini
Blanket
White/Ebony
95 x 62cm
MB-RAI-WHEB



Blah Blah Mini
Blanket
Black/White
95 x 62mm
MB-BLA-BLWH



Night Night Mini
Blanket
Blue
100 x 68cm
MB-NIGH-BLUE



Night Night Mini
Blanket
Grey
100 x 68cm
MB-NIGH-GREY



Night Night Mini
Blanket
Mustard
100 x 68cm
MB-NIGH-MUST



Hand in Hand Scarf
NEW



Panda Shawl
NEW

HATS & SCARVES

All made in 100% lambswool.
Made in Scotland.



Day and Night
Scarf **NEW**
Black/White
235 x 27cm
SC-DAY-BLWH



Day and Night
Scarf **NEW**
Grey/White
235 x 27cm
SC-DAY-GRWH



Swan Scarf
Large Black
7 x 174cm
SC-SWA-BLAC-LX

Mini Black
4 x 97cm
SC-SWA-BLAC-SX



Swan Scarf
Large White
7 x 174cm
C-SWA-WHIT-LX

Mini White
4 x 97cm
SC-SWA-WHIT-SX



Cactus Hat **NEW**
Blue/Mustard
One size
HA-CACT-BLMU



Cactus Hat **NEW**
Green/Brown
One size
HA-CACT-GRBR



Hand in Hand
Scarf **NEW**
Black/White
233 x 9.5cm
SC-HAND-BLWH



Hand in Hand
Scarf **NEW**
Blue
233 x 9.5cm
SC-HAND-BLUE



Hand in Hand
Scarf **NEW**
Gold
233 x 9.5cm
SC-HAND-GOLD



Sausage Dog Scarf
Brown
146 x 14 cm
SC-SAUS-BROW



Sausage Dog Scarf
Grey
146 x 14 cm
SC-SAUS-GREY



Raccoon Scarf
17 x 162cm
Brown
SC-RAC-BROW



Raccoon Scarf
17 x 162cm
Grey
SC-RAC-GREY



Fox Shawl **NEW**
Grey
140 x 45cm
SC-FOX-SHAWL-GR



Fox Shawl **NEW**
Orange
140 x 45cm
SC-FOX-SHAWL-OR



Panda Shawl **NEW**
Black/White
140 x 45cm
SC-PAN-SHAWL-BL



Brown Bear Shawl
Brown
140 x 50cm
SC-BEAR-BROW



Fox Scarf
Grey
10 x 118cm
SC-FOX-GREY



Fox Scarf
Orange
10 x 118cm
SC-FOX-ORAN



Tartan Fox
133 x 10cm
SC-FOX-ABER



Oak Tree Scarf
NEW
Green/Blue
150 x 18cm
SC-OAK-GRBL



Fir Tree Scarf **NEW**
Green/Pink
150 x 18cm
SC-FIR-GRPI



Lambswool Comb
To comb and care
for your woolies
ST-COM-WHIT



CERAMICS

Bone China made and decorated
in Stoke-on-Trent UK.



Dove Plate **NEW**
21mm ø
CE-DOVE-PINK



Nest Plate **NEW**
21mm ø
CE-NEST-MUST



Woodpecker
Plate **NEW**
21mm ø
CE-WOOD-BLUE



Grace Plate
21mm ø
CE-GRA-BROW



Greg Plate
21mm ø
CE-GREG-YELL



Baby Bear -
Small
4 x 13cm ø
CE-BAB-BOWL-SX



Mummy Bear -
Medium
5 x 15cm ø
CE-MUM-BOWL-MX



Daddy Bear -
Large
6 x 19cm ø
CE-DAD-BOWL-LX



Gwen Plate
21mm ø
CE-GWEN-ORAN



Goldie Plate
21mm ø
CE-GOL-YELL



Johnny Plate
21mm ø
CE-JOH-BROW



Bear Plate
21mm ø
CE-BAR-BROW



Fox Plate
21mm ø
CE-FOX-ORAN



Dove Mug **NEW**
9 x 8.5cm ø
CE-MUG-DOVE



Nest Mug **NEW**
9 x 8.5cm ø
CE-MUG-NEST-L



Mog Mug
9 x 8.5cm ø
CE-MUG-MOGG



London Bus Mug
8.5 x 8cm ø
CE-MUG-LON



Mog Plate
21mm ø
CE-MOG-WHIT



Forest Plate
21cm ø
CE-FORE-GREE



Forest Dinner
Plate
27cm ø
CE-FOR-GREE



Birdy Walk Dinner
Plate
27cm ø
CE-BIR-WHEB



Raindrop Dinner
Plate
27cm ø
CE-RAIN-BLUE



Woodpecker
Beaker **NEW**
10 x 7cm ø
CE-BEA-WOOD



Bear Beaker
10 x 7cm ø
CE-BEA-BEAR



Cat's Pyjamas
Beaker
10 x 7cm ø
CE-BEA-CAT



Grey Owl Beaker
10 x 7cm ø
CE-BEA-GREY



House on the Hill
Beaker
10 x 7cm ø
CE-BEA-HOU



Forest Bowl -
Small
4 x 13cm
CE-FORE-BOWL-SM



Forest Bowl -
Medium
5 x 15cm ø
CE-FORE-BOWL-M



Forest Bowl -
Large
6 x 19cm ø
CE-FORE-BOWL-L



Forest Tumbler
8 x 8cm ø
CE-TUM-FORE



Squirrel Beaker
10 x 7cm ø
CE-BEA-SQUI



Beardy Man
Egg Cup
6 x 5cm ø
CE-EGG-BURT



Meg Egg Cup
6 x 5cm ø
CE-EGG-MEGX



Mog Egg Cup
6 x 5cm ø
CE-EGG-MOGX

ECO-FRIENDLY PICNIC SET

Bio-degradable bamboo fibre recyclable and dishwasher proof.



Bamboo Bowl
Bear Spot
13cm ø
ME-SPOT-BOWL



Bamboo Bowl
Cool Cat
13cm ø
ME-COOL-BOWL



Bamboo Bowl
Fox Stripe
13cm ø
ME-STRIPE-BOWL



Bamboo Plate
Bear Spot
20cm ø
ME-SPOT-PLATE



Bamboo Plate
Cool Cat
20cm ø
ME-COOL-PLATE



Bamboo Plate
Fox Stripe
20cm ø
ME-STRIPE-PLATE



Bamboo Dinner
Plate
Spot Pattern
25cm ø
ME-SPOT-DINN



Bamboo Cup
Bear Spot
9 x 7.5cm ø
ME-SPOT-CUP



Bamboo Cup
Cool Cat
9 x 7.5cm ø
ME-COOL-CUP



Bamboo Cup
Fox Stripe
9 x 7.5cm ø
ME-STRIPE-CUP



Hungry Wolf Tray
45cm ø
TR-WOLF-ROUN



MELAMINE TRAYS



Bear Spot Mini
Tray **NEW**
27 x 18cm
TR-BEAR-MINI



Fox Stripe Mini
Tray **NEW**
27 x 18cm
TR-FOX-MINI



Cool Cat Tray **NEW**
43 x 33cm
TR-COOL-CAT



Fruit Bear Tray
43 x 33cm
TR-FRUI-BEAR



Fox in the Leaves
Tray
36cm ø
TR-FOX-GREEN



Carnival Tray
45cm ø
TR-BEAR-ROUN

TEA TOWELS &
KITCHEN ACCESSORIES

100% Cotton



Cat's Pyjamas
48 x 80cm
TE-CAT



Use My Mane
48 x 80cm
TE-MANE



Bear Friends
48 x 80cm
TE-BEA



Fox Friends
48 x 80cm
White/Multi
TE-FOX



Use My Beard
48 x 80cm
TE-USE



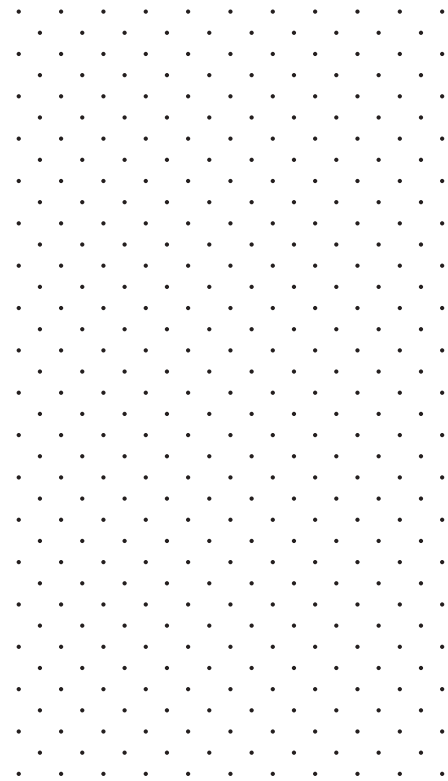
Use My Headscarf
NEW
Mixed
48 x 80cm
TE-HEAD



Use My Quiff NEW
Mixed
48 x 80cm
TE-QUIFF



Use My Moustache
NEW
Mixed
48 x 80cm
TE-TACHE



Cat Cook Oven
Mitt
19 x 35cm
TE-OVE-CAT



Menagerie Oven
Mitt
19 x 35cm
TE-OVE-MENA



Cat Cook Apron
66 x 80cm
TE-APR-CAT

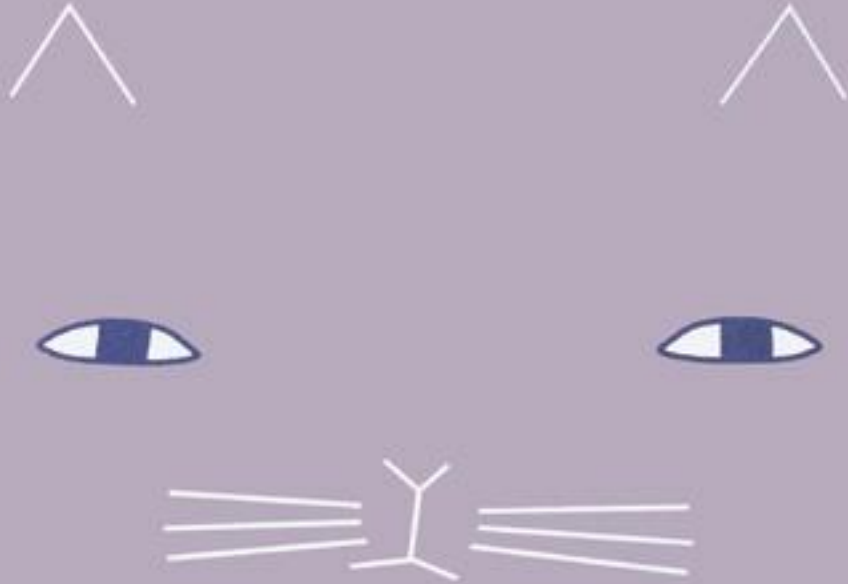


Menagerie Apron
66 x 80cm
TE-APR-MENA



Kids Seal Apron
(Ages 4-7)
55 x 45cm
TE-APR-SEAL-M

STATIONERY



Night Night
Hanging Decorations
(Set of 6)
Multi-coloured
ST-DECO-NIGHT



Candle Card **NEW**
A6
ST-CAR-CAND



Jumping for Joy
Card **NEW**
A6
ST-CAR-JUMP



Mog Card **NEW**
A6
ST-CAR-MOG



Elephant Card
A6
ST-CAR-ELEP



Giraffe Card
A6
ST-CAR-GIRA



Moose Card **NEW**
A6
ST-CAR-MOOSE



Say Cheese Card
NEW
A6
ST-CAR-CHEE



Tandem Card **NEW**
A6
ST-CAR-TANDEM



Tiger Card
A6
ST-CAR-TIGE



Zebra Card
A6
ST-CAR-ZEBR



Shaped Card
House **NEW**
11.5 x 13.5 cm
ST-CAR-HOUS



Shaped Card
Baby **NEW**
16.5 x 8 cm
ST-CAR-BABY



Shaped Card
Dove **NEW**
13.5 x 15 cm
ST-CAR-DOVE

COLLABORATIONS



Donna has achieved so much since graduating from The Royal College of Art and first showcasing her menagerie of knitted creatures in 2003. After rave reviews she set up her London based company to fulfil demand for her curious characters. Since then, her business has grown into an established brand where her distinctive style has won her a cult following of fans as well as a string of prestigious awards.

She has been named 'Designer of the Year' at Elle Decoration's British Design Awards, exhibited a solo show of knitted sculptures and paintings entitled 'Endangered Species' at the Yorkshire Sculpture Park and designed a line of childrenswear for UK retailer John Lewis. Donna has been a busy bee this year working on even more unique projects and exciting commissions.

John Lewis, UK

Autumn 2016 sees Donna's third season designing an exclusive childrenswear clothing collection for UK department store John Lewis. All garments are made with 100% organic cotton and only suppliers based in Europe were used to produce the line. Be prepared for circus performers, performing poodles and a bit of magic!

"It's been great to create an affordable collection of kid's clothes using our playful motifs and patterns, and I'm especially excited for the llama poncho which will appear in the stores this Autumn!"

www.johnlewis.com



Fogo Island Inn, Canada

Donna Wilson was one of a small team of designers selected and led by internationally acclaimed designer Ilse Crawford to design and furnish this boutique hotel and gallery complex located on the remote New Foundland Island of Fogo.

Donna designed for each bedroom, an armchair called Bertha with matching ottoman in bespoke knitted print, as well as a range of hand painted wall papers.

Building on the legacy of local craft traditions, all the furniture at the Inn is handcrafted using the skills of the local boat builders and guild of quilt makers, working together with an international roster of visiting designers.

"The Brett House in the town Joe Batt's Arm served as inspiration for the fabric print on our Bertha Chair. I took inspiration from the hand-cut shingles found on the outside of the building."

www.fogoislandinn.ca



Mamas and Papas, Worldwide

The second special edition of strollers and babies accessories was launched this year in partnership with UK's top nursery brand Mamas and Papas. The new Three Bears design is a monochrome lino-print pattern set against deep grey with accents of forest green. Mamas and Papas' reputation for quality paired with Donna's distinctly illustrative style is loved by big bears and little bears alike.

www.mamasandpapas.com

SCP, UK

In collaboration with SCP we created a series of distinctive patterned pouffes. Frank, Ernest and Henry pouffes are soft and shapely as occasional seating and yet robust enough to roll down hills.

The new upholstery fabric called Stitch was launched at Salone Internazionale del Mobile 2016 in Milan. This knitted design is reminiscent of traditional Swedish folk designs, in a natural muted colour palette of grey, blue and rust.

www.scp.co.uk



Ljubljana Puppet Theatre, Slovenia

Ljubljana Puppet Theatre hosts puppet shows and drama performances for both young and adult audiences. It was founded in 1948, and since 1984 it permanently resides in Krekov Square.

Working with award winning director Ivana Djilas, Donna designed the stage interior and all puppets for children's story 'Goose The Bear' by Katja Gehrman. Everything has been knitted in our London studio whilst collaborating with the Theatre's skilled team of makers and performers in their spectacular workshop. The show will be on for the next two years in the prestigious Ljubljana Puppet Theatre.

"This was one of the most enjoyable projects I've worked on. It was fantastic to see 'Big Ted' and the other characters come to life through puppetry and so rewarding to see for myself how much the audience loved it, there's nothing better than children's laughter!"

www.lgl.si



Design Marcia Mihotich
Photography Gareth Hacker
Stylist Charlotte Love

Donna would like to thank her fantastic team this year Rebecca, Kate, Sian, Jess, Amy and the two Lauras. Our dedicated team of outworkers around the country Elaine, Erin, Navida, Katherine, Genna and Tricia. Plus of course the wonderful manufacturers and suppliers who produce her designs from knitwear to ceramics to wooden dolls.

Thank you!



Check out our new website!
www.donnawilson.com
Facebook: www.facebook.com/DonnaWilson
Blog: www.donnawilson.com/blog
Instagram: @donnawilsonld
Twitter: @donnawilsonld



DONNA WILSON