

# Super Manifold

A new era of water control

REGAL JOINT CO., LTD.

1-9-49 Onodai Minami-ku Sagami-hara-shi  
Kanagawa Japan 252 0331  
Tel: +81-42 756 7411 Fax: +81-42 752 2004  
URL: <http://www.rgl.co.jp>

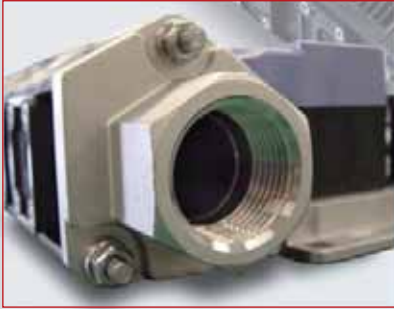


*With the diversification of the process, cooling water line branch a lot. Manifold new appearance that can correspond to the cooling water line of multi-system.*



(Reference photograph)

## POINT 1 A large bore



Main pipe 1 inch. I will be available to the cooling water line of a multi-branch system.

## POINT 2 Up to 10 consolidated

Improved structure for connecting the manifold block. This product, you can concatenate the manifold block of up to 10.

## POINT 3 Free flow path design



The use of the seal ring / seal disk and various adapter, you can design a variety of flow paths.

## A rich variation of water control equipment

### POINT 4 Compatibility



**Through pipe**

I passed through the fluid to the straight. I can be used as a dummy of the sensor.

**Stop plug**

Do not empty the fluid in the flow path.

**Ball valve**

It can open and close the flow path, the fluid can be adjusted.

**Solenoid valve**

**Air cylinder valve**

**Impeller flowmeter Series**

FS-S / FS-AR  
FS-N / FS-C

**Karman vortex flowmeter Series**

KSL 5L/30L

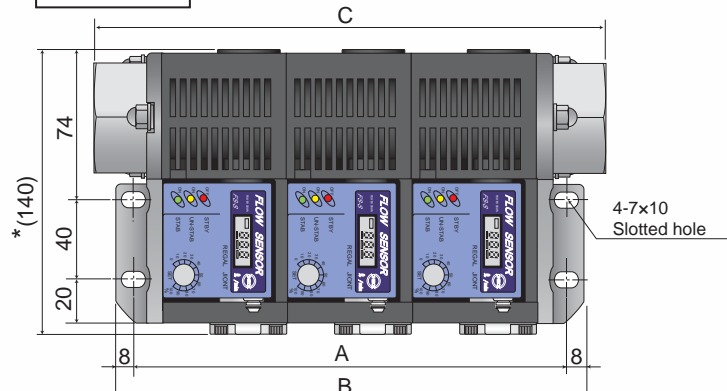
**Solenoid valve**

RSV

### Specification

Applicable fluid	Industrial water, water
Max. operating pressure	0.97MPa
Fluid temperature	0-90 ( No freezing )
Pipe diameter	Rc 1" ( Mother tube )
Material of liquid contacting part	Stainless steel / PPS / nylon
Number of stations	10 stations 1 station to a maximum of minimum

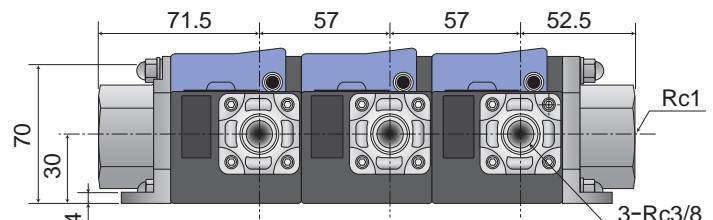
### Dimensions



\* Dimensions of the value depends on the type of adapter.

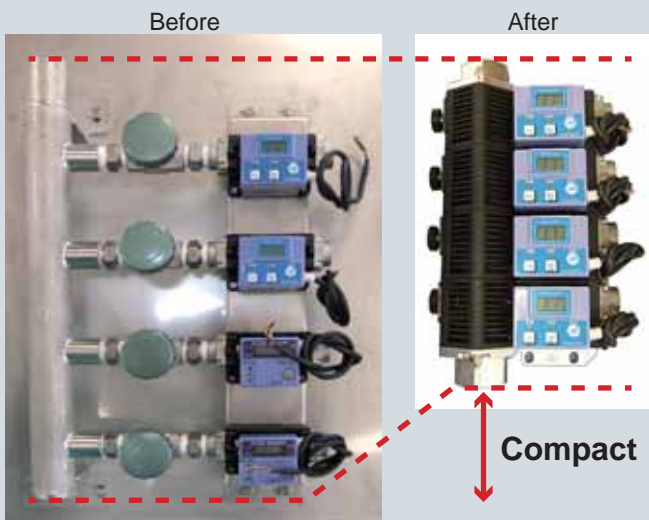
A=27+(57xn) B=43+(57xn) C=67+(57xn)

n=Number of stations



\* Please note that for performance improvement, that it may be subject to change without notice the shape and specifications.

## Achieve a compact piping without welding



Compact

Footprint by pipeless  
Reducing design arrangement man hours  
Reducing air leakage