

Original Article

Gemcitabine combined with gum mastic causes potent growth inhibition and apoptosis of pancreatic cancer cells

Xin-yu HUANG^{1, #, *}, Hong-cheng WANG^{1, #}, Zhou YUAN¹, Ang LI², Mei-lan HE², Kai-xing AI¹, Qi ZHENG¹, Huan-long QIN¹

¹Department of Surgery, the Sixth People's Hospital, Shanghai Jiaotong University, Shanghai 200233, China; ²School of Life Science and Technology, Tongji University, Shanghai 200092, China

Aim: To investigate the antiproliferative and apoptotic effects of gemcitabine combined with gum mastic and the underlying mechanisms in human pancreatic cancer cell lines.

Methods: Cell proliferation and apoptosis were examined using the methyl thiazolyl tetrazolium (MTT) assay and propidium iodine staining, respectively. The expression of Bcl-2, Bax, NF- κ B p65 subunit, and I κ B α protein was measured using Western blotting.

Results: Gemcitabine 0.01–100 μ g/mL inhibited cell proliferation and induced apoptosis in both pancreatic cancer BxPC-3 and COLO 357 cells. Gum mastic 40 μ g/mL significantly potentiated the antiproliferative and apoptotic effects of gemcitabine 10 μ g/mL after 72-h treatment. When cells were treated with gemcitabine in combination with gum mastic, the I κ B α level was increased, whereas NF- κ B activation was blocked; the expression of Bax protein was substantially increased, but Bcl-2 protein was down-regulated.

Conclusion: Gemcitabine combined with gum mastic causes potent apoptosis in pancreatic cancer cells. The combination may be an effective therapeutic strategy for pancreatic cancer.

Keywords: gemcitabine; gum mastic; pancreatic cancer; apoptosis; NF-kappaB; Bcl-2; Bax

Acta Pharmacologica Sinica (2010) 31: 741–745; doi: 10.1038/aps.2010.54

Introduction

Pancreatic cancer is the fourth leading cause of cancer death worldwide, with a one-year survival rate of just 10%, and only 5% of patients survive beyond five years^[1]. Even after curative resection, the 5-year survival is only 10%–20%^[2]. Conventional chemotherapy and radiotherapy, either as single agents or in combination, have limited effect on the overall survival of patients with pancreatic cancer^[3]. In the past decade, despite the availability of several therapeutic agents, gemcitabine (2',2'-difluorodeoxycytidine) is still the first-line treatment of locally advanced and metastatic pancreatic cancers^[4–8]. Gemcitabine has been used as a single antitumor agent or in combination with other cytotoxic agents for solid tumors such as ovarian, non-small cell lung, and pancreatic cancers^[9–11]. However, the efficiency of gemcitabine is not satisfactory^[12, 13], and improving its antitumor cytotoxic effects has attracted great interest in recent years.

Gum mastic, a natural resin obtained from the stem and

leaves of *Pistacia lentiscus* trees, has been extensively used for centuries in Mediterranean and Middle Eastern countries, as both a dietary supplement and an herbal remedy. Medical trials show that gum mastic may have cytoprotective or antacid effects on the gastrointestinal system. It has also been reported to possess antioxidant^[14] and antibacterial^[15] activity. Recently, it has been identified as an effective inhibitor of cell proliferation and cell cycle progression in human prostate cancer cells^[16, 17] and as an inducer of apoptosis in human HCT116 colon cancer cells^[18].

In the present study, we investigated the *in vitro* antiproliferative and apoptotic effects and mechanisms of gemcitabine combined with gum mastic in human pancreatic cell lines.

Materials and methods

Cell culture

Human pancreatic cell lines BxPC-3 and COLO 357 (American Type Culture Collection, Manassas, VA, USA) were grown in RPMI-1640 and DMEM, respectively, and supplemented with 10% heat-inactivated fetal bovine serum (FBS) at 37 °C with 5% CO₂. Cells were passaged twice weekly to ensure exponential growth.

These authors contributed equally to the article.

* To whom correspondence should be addressed.

E-mail huangxinyush@hotmail.com

Received 2010-01-03 Accepted 2010-04-03

Cell proliferation assay

3-(4,5-dimethylthiazol-2-yl)-2,5-diphenyltetrazolium bromide (MTT) assays were performed to evaluate cell growth and viability of cells after treatment with gemcitabine (Lilly, France) and/or gum mastic (Sigma, St Louis, MO, USA, N_Q G0878). Cells were seeded (BxPC-3, 1×10^4 cells/well; COLO 357, 5×10^4 cells/well) in 96-well plates in RPMI-1640 with 10% FBS for 72 h at 37 °C with 5% CO₂. MTT (Sigma Chemicals) reagent (5 mg/mL) was added at the time of evaluation of cell growth, and incubation was continued for an additional 4 h. The reaction was terminated with 150 μ L dimethylsulfoxide (DMSO, Sigma Chemicals) per well. Absorbance values were determined using an ELISA reader (Model 680, Bio-Rad) at 490 nm.

Analysis of cell apoptosis by flow cytometry

Cells were seeded (4×10^5 cells per well) in 6-well plates in RPMI-1640 medium for 24 h. The medium was removed and cells were washed with PBS, and then gemcitabine (10 μ g/mL) and/or gum mastic (40 μ g/mL) was added. After 48 h, cells were trypsinized and fixed overnight in 70% ice-cold ethanol at 4 °C. Before flow cytometric analysis, the fixed cells were centrifuged, washed twice with PBS, and resuspended in PI staining solution containing 5 μ g/mL PI and 250 μ g/mL RNase A (Sigma Chemicals). Using a FACSCalibur flow cytometer (FCM-500, Beckman Coulter), cell cycle analysis was performed on 10 000 cells for each sample. Quantitation of cell cycle distribution was performed using CellQuest software.

Western blot analysis

The cellular lysates were separated by 10% SDS-PAGE and electro-transferred onto nitrocellulose membranes. After being blocked with 5% non-fat milk in TBST (20 mmol/L Tris, 150 mmol/L NaCl, 0.2% Tween-20, pH 7.6), the membranes were incubated with specific anti-NF- κ B p65, anti-Bcl-2, anti-Bax, anti-I κ B α or anti- β -actin (Santa Cruz) antibodies at room temperature for 2 h, and subsequently with 1:4000 horseradish peroxidase (HRP)-conjugated second antibody (Santa Cruz) for 1 h. Immunoreactive bands were visualized using an enhanced chemiluminescence kit (ECL, Santa Cruz Biotechnology Inc, USA). β -actin was used to normalize the quantity of protein on the blot.

Statistical analysis

Each experiment was performed at least three times. Data were shown as the mean \pm SD where applicable, and differences were evaluated using Student's *t*-tests. The probability of $P < 0.05$ was considered to be statistically significant.

Results

The effect of gemcitabine and gum mastic on cell proliferation

To detect the effect of gemcitabine and gum mastic on cell growth, human pancreatic cancer cell lines BxPC-3 and COLO 357 were treated with graded concentrations of gemcitabine (0.01–100 μ g/mL) or gum mastic (10–50 μ g/mL) for 72 h. As shown in Figure 1A, cell proliferation was inhibited by either

gemcitabine or gum mastic treatment in a dose-dependent manner. Overall, 10 μ g/mL of gemcitabine or 40 μ g/mL of gum mastic produced maximal growth inhibition of 55.55% ($P < 0.01$) and 49.75% ($P < 0.01$), respectively, in BxPC-3 cells. Treatment of COLO 357 cells with these two agents was also effective. Results from Figure 1A indicate that gum mastic, a natural resin, can inhibit pancreatic cancer cells' growth *in vitro*. Subsequently, the effect of co-treatment with gemcitabine and gum mastic on cell proliferation using the MTT assay was observed. Cells were cultured in the presence of both 10 μ g/mL of gemcitabine and 40 μ g/mL of gum mastic for 72 h. After co-treatment with these two agents, cell proliferation was inhibited to a much greater extent than with either agent alone ($P < 0.01$) or control ($P < 0.01$, Figure 1B). These results suggest that gemcitabine combined with gum mastic induces potent growth inhibition.

The effect of gemcitabine and gum mastic on cell apoptosis

BxPC-3 and COLO 357 cells were treated with gemcitabine (10 μ g/mL) and gum mastic (40 μ g/mL) individually or in combination. Cell apoptosis was examined by Annexin V-PI double-labeling and FACS analysis. As shown in Figure 2, in BxPC-3 cells, 30.40% \pm 3.477% and 31.37% \pm 1.662% of cells were apoptotic in the gum mastic group and gemcitabine groups, respectively. In COLO 357 cells, 29.45% \pm 1.750% and 30.07% \pm 1.358% of cells were apoptotic in the two groups. Compared with single-agent treatment, the combination of gemcitabine and gum mastic resulted in apoptosis in a much higher percentage (BxPC-3, 45.13% \pm 4.005%, $P < 0.01$; COLO 357, 38.87% \pm 4.552%, $P < 0.05$). In contrast, in the control group, induction of apoptosis was not detected (BxPC-3, 5.067% \pm 1.365%, $P < 0.01$). The above results suggest that gemcitabine and/or gum mastic have inhibitory effects on cell apoptosis and growth inhibition, and induction of apoptosis is not cell type specific.

NF- κ B activation can be inhibited by combination use of gemcitabine and gum mastic

Recent reports^[19, 20] have revealed that, in pancreatic cancer cells, gemcitabine can induce activation of NF- κ B. The experiment was repeated and yielded the same results (Figure 3A–3B, lane 2). To detect whether the inhibitory effect of gum mastic on BxPC-3 cell proliferation was caused by the inactivation of NF- κ B, Western blotting was performed to test the changes in NF- κ B p65 protein expression. As shown in Figure 3B (lane 3), gum mastic alone suppressed NF- κ B expression. Most importantly, co-treatment with gum mastic inhibited gemcitabine-induced NF- κ B activation (Figure 3B, lane 4). A similar phenomenon was found in COLO 357 cells (Figure 3B).

The treatment of gemcitabine combined with gum mastic down-regulated the expression of Bcl-2, increased the expression of Bax, and prevented the degradation of I κ B α

Because NF- κ B has a central role in the regulation of the apoptotic pathway in pancreatic cancer, the expression of I κ B α , Bcl-2 (NF- κ B downstream anti-apoptotic molecules) and Bax (NF- κ B downstream pro-apoptotic molecules) was detected.

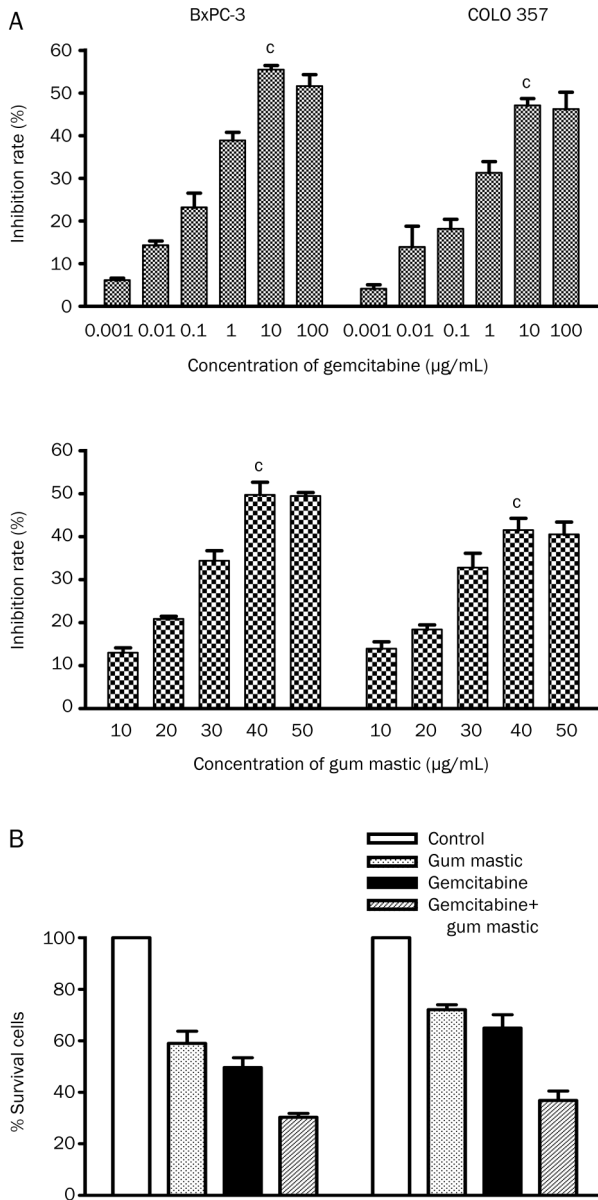


Figure 1. The inhibition of cell proliferation by either gemcitabine (0.01–100 µg/mL) or gum mastic (10–50 µg/mL) alone (A) or the combination (B). The concentration of gemcitabine (10 µg/mL) and gum mastic (40 µg/mL) used in Figure 1B is based on the result from Figure 1A. Results are representative of 3 independent experiments. ^c*P*<0.01.

Western blotting showed that the expression of Bcl-2 was significantly down-regulated in the combination group compared to treatment with an individual agent and control (*P*<0.01), whereas Bax expression was substantially increased. Translocation of NF-κB to the nucleus is normally regulated by IκBα degradation. Western blot for IκBα was done as an index of total inhibitor expression levels. When BxPC-3 cells were treated with different concentrations of gemcitabine in the presence or absence of gum mastic for 48 h, significant dose-dependent increases in total IκBα expression levels were observed (Figure 4). A similar effect was observed in COLO

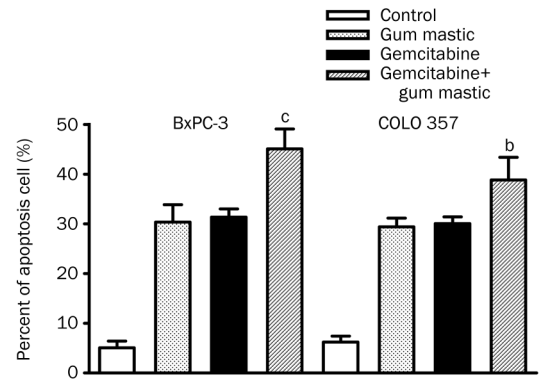


Figure 2. Effect of gemcitabine and gum mastic on cell apoptosis. BxPC-3 (4×10^5 cells per well) and COLO 357 cells (3×10^5 cells per well) were incubated with either gemcitabine (10 µg/mL) or gum mastic (40 µg/mL) or in combination. After 48 h, cell apoptosis was examined by Annexin V-PI double-labeling and FACS analysis. ^b*P*<0.05, ^c*P*<0.01 vs gemcitabine or gum mastic alone.

357 cells (data not shown).

Discussion

Over the past decade, the core drug of treatment for locally advanced and metastatic pancreatic cancer has remained gemcitabine^[21]. However, its efficacy is often limited. To improve its antitumor cytotoxic effect and to identify new treatments for pancreatic cancer treatment, we investigated the effects of gemcitabine in combination with a new agent, gum mastic, on cell proliferation as well as apoptosis in human pancreatic cancer cell lines and explored the mechanism contributing to these effects.

The antitumor activity of a drug is associated with inhibition of tumor cell proliferation, promotion of cellular differentiation, and induction of apoptosis. Gum mastic is a natural extract of *Pistacia lentiscus* trees, and its anticancer properties are newly identified^[16–18, 22]. *In vitro*, gum mastic has been proven to inhibit growth of prostate cancer cells and induce apoptosis of colon cancer cells. In this study, we evaluated the effects of gum mastic in pancreatic cancer cells. We found that gum mastic, *in vitro*, had antiproliferative and apoptotic effects on human pancreatic cancer cells (BxPC-3). Most importantly, gum mastic was synergistic when used with gemcitabine. After simultaneous treatment with these two agents, cell proliferation was greatly suppressed and the rate of cell apoptosis was significantly higher in comparison to cells treated with either agent alone.

NF-κB pathways are key regulators of numerous cellular events such as proliferation, differentiation, and apoptosis, and they are also related to tumor development and progression. Because NF-κB has a central role in the regulation of apoptotic pathways in pancreatic cancer, we evaluated the effect of gemcitabine combined with gum mastic on expression of the NF-κB upstream molecule IκBα and downstream molecules Bcl-2 and Bax. Mature NF-κB p65:p50 dimers are trapped in the cytoplasm of unstimulated cells by interaction

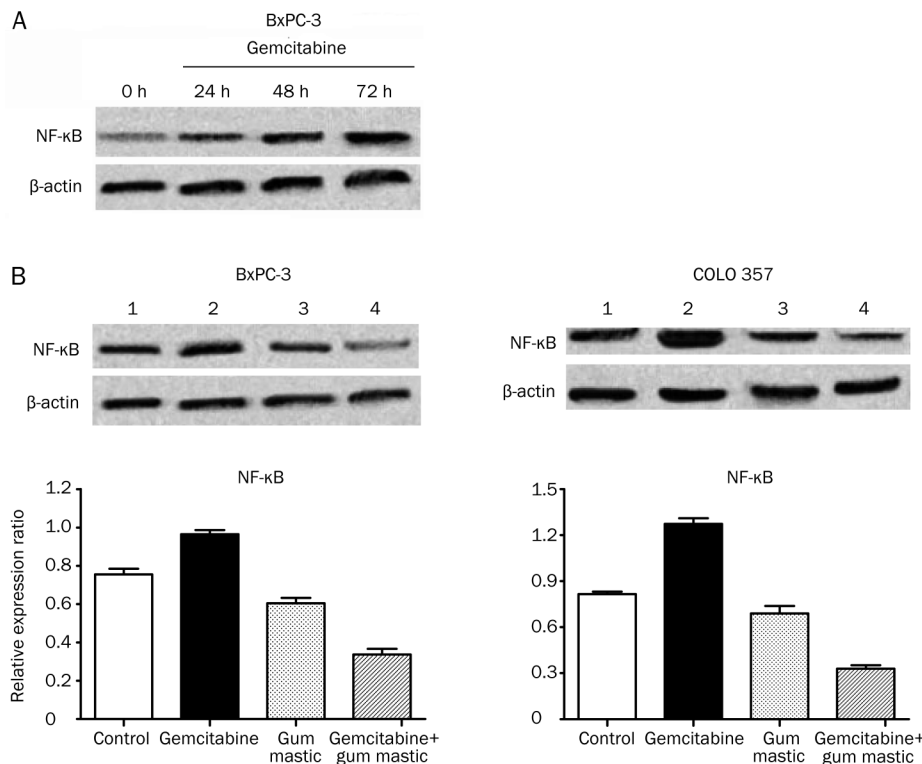


Figure 3. NF-κB activation can be inhibited by combined treatment with gemcitabine and gum mastic. (A) Western blot analysis for NF-κB in nuclear extracts of BxPC-3 cells treated with 10 μg/mL gemcitabine at different time points. (B) Western blot analysis for NF-κB p65 subunit in nuclear extracts of both BxPC-3 and COLO 357 cells after 48 h treatment with cell medium (lane 1), gum mastic (lane 2), gemcitabine (lane 3) or their combination (lane 4). β-actin protein was used as an internal control. Densitometric measurement for NF-κB p65 protein levels was normalized to internal control, respectively, and expressed as a relative value.

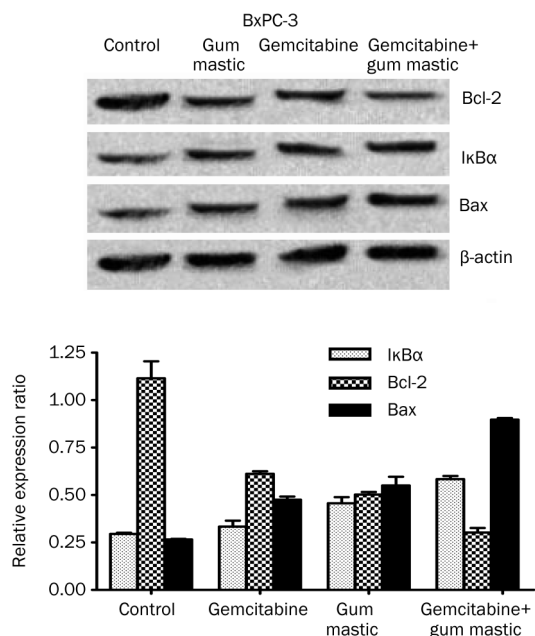


Figure 4. The treatment of gemcitabine combined with gum mastic alters the expression of Bcl-2, Bax, and IκBα. The expression of Bcl-2, Bax, and IκBα was analyzed by Western blot. BxPC-3 cells were treated with cell medium, 40 μg/mL of gum mastic, 10 μg/mL of gemcitabine or their combination for 48 h. β-actin was used as an internal control. Densitometric measurement for these proteins levels was normalized to internal control, respectively, and expressed as a relative value.

with inhibitory proteins termed IκBα. IKK phosphorylates IκBα proteins, thereby targeting them to rapid ubiquitin-dependent proteolysis that initiates NF-κB activation^[23, 24]. The activation of NF-κB leads to the expression of a large number of target genes, among which are Bcl-2 family proteins. The Bcl-2 family is very important in the regulation of apoptosis and is composed of both pro-apoptotic and anti-apoptotic members^[25]. It is clear that Bcl-2 protects many cell lines from induced apoptosis. Other proteins, such as Bcl-x_L, have the same anti-apoptotic function, but several molecules of the same family, such as Bcl-x_S and Bax-alpha, can trigger the opposite effect. Bcl-2 can interact with other proteins^[26-28]. For example, Bax, which can exist as a homodimer, is also able to form a heterodimer with Bcl-2. Overexpression of Bax in several cell lines counteracts the effect of Bcl-2^[25-28].

Similarly, in BxPC-3 and COLO357 cell lines, inhibition of NF-κB by gum mastic was associated with the increased apoptotic effect of gemcitabine. We found that when the cells were treated with gemcitabine and gum mastic, NF-κB p65 expression was strongly suppressed whereas IκBα expression was increased. The expression of Bcl-2 was significantly down-regulated and Bax was up-regulated in the combination group compared with individual agent treatment and untreated control. Thus, it can be speculated that the addition of gum mastic to gemcitabine increased the inhibition of the NF-κB signaling pathway on cell growth and apoptosis of BxPC-3 cells. The increased IκBα expression could inhibit NF-κB expression and activation, which induced cell apoptosis. The inhibition

of the NF- κ B pathway down-regulated anti-apoptotic Bcl-2 but up-regulated the expression of pro-apoptotic Bax.

Therefore, gemcitabine combined with gum mastic leads to potent suppression of pancreatic cancer cell proliferation and apoptosis. However, whether it is a common phenomenon should be determined by testing more pancreatic cell lines such as PANC-1^[29,30]. Our findings suggest that the combined use of gemcitabine and gum mastic has potential clinical value and may act as an effective therapeutic strategy for the clinical management of pancreatic cancer.

Author contribution

Xin-yu HUANG supervised the project and designed the experiments; Hong-cheng WANG, Zhou YUAN, Ang LI, Mei-lan HE, and Kai-xing AI performed the experiments; Qi ZHENG and Huan-long QIN wrote the paper; Ang LI critical revised the manuscript.

References

- 1 Fryer RA, Galustian C, Dalgleish AG. Recent advances and developments in treatment strategies against pancreatic cancer. *Curr Clin Pharmacol* 2009; 4: 102–12.
- 2 Yokoyama Y, Nimura Y, Nagino M. Advances in the treatment of pancreatic cancer: limitations of surgery and evaluation of new therapeutic strategies. *Surg Today* 2009; 39: 466–75.
- 3 Lockhart AC, Rothenberg ML, Berlin JD. Treatment for pancreatic cancer: current therapy and continued progress. *Gastroenterology* 2005; 128: 1642–54.
- 4 Burris HA, Moore MJ, Andersen J, Green MR, Rothenberg ML, Modiano MR, et al. Improvements in survival and clinical benefit with gemcitabine as first-line therapy for patients with advanced pancreatic cancer: a randomized-trial. *J Clin Oncol* 1997; 15: 2403–13.
- 5 Burris HA, Storniolo AM. Assessing clinical benefit in the treatment of pancreas cancer: gemcitabine compared to 5-fluorouracil. *Eur J Cancer* 1997; 33: 18–22.
- 6 Mackenzie RP, McCollum AD. Novel agents for the treatment of adenocarcinoma of the pancreas. *Expert Rev Anticancer Ther* 2009; 9: 1473–85.
- 7 Igarashi H, Ito T, Kawabe K, Hisano T, Arita Y, Kaku T, et al. Chemoradiotherapy with twice-weekly administration of low-dose gemcitabine for locally advanced pancreatic cancer. *World J Gastroenterol* 2008; 14: 5311–5.
- 8 Boeck S, Hinke A, Wilkowski R, Heinemann V. Importance of performance status for treatment outcome in advanced pancreatic cancer. *World J Gastroenterol* 2007; 13: 224–7.
- 9 Abratt RP, Bezwoda WR, Falkson G, Goedhals L, Hacking D, Rugg TA. Efficacy and safety profile of gemcitabine in non-small cell lung cancer. Phase II study. *J Clin Oncol* 1994; 12: 1535–40.
- 10 Lund B, Hansen OP, Theilade K, Hansen M, Neijit JP. Phase II study of gemcitabine (2',2'-difluorodeoxycytidine) in previously treated ovarian cancer patients. *J Natl Cancer Inst* 1994; 86: 1530–3.
- 11 Heinemann V. Gemcitabine: progress in the treatment of pancreatic cancer. *Oncology* 2001; 60: 8–18.
- 12 Nieto J, Grossbard ML, Kozuch P. Metastatic pancreatic cancer 2008: is the glass less empty? *Oncologist* 2008; 13: 562–76.
- 13 Custodio A, Puente J, Sastre J, Díaz-Rubio E. Second-line therapy for advanced pancreatic cancer: a review of the literature and future directions. *Cancer Treat Rev* 2009; 35: 676–84.
- 14 Dedoussis GV, Kaliora AC, Psarras S, Chiou A, Mylona A, Papadopoulos NG, et al. Antiatherogenic effect of *Pistacia lentiscus* via GSH restoration and downregulation of CD36 mRNA expression. *Atherosclerosis* 2004; 174: 293–303.
- 15 Huwez FU, Thirlwell D, Cockayne A, Ala'Aldeen DA. Mastic gum kills *Helicobacter pylori*. *N Engl J Med* 1998; 339: 1946.
- 16 He ML, Yuan HQ, Jiang AL, Gong AY, Chen WW, Zhang PJ, et al. Gum mastic inhibits the expression and function of the androgen receptor in prostate cancer cells. *Cancer* 2006; 106: 2547–55.
- 17 He ML, Li A, Xu CS, Wang SL, Zhang MJ, Gu H, et al. Mechanisms of antiprostata cancer by gum mastic: NF-kappaB signal as target. *Acta Pharmacol Sin* 2007; 28: 446–52.
- 18 Balan KV, Demetzos C, Prince J, Dimas K, Cladaras M, Han Z, et al. Induction of apoptosis in human colon cancer HCT116 cells treated with an extract of the plant product, Chios mastic gum. *In Vivo* 2005; 19: 93–102.
- 19 Li Y, Ellis KL, Ali S, El-Rayes BF, Nedeljkovic-Kurepa A, Kucuk O, et al. Apoptosis-inducing effect of chemotherapeutic agents is potentiated by soy isoflavone genistein, a natural inhibitor of NF-kB in BxPC-3 pancreatic cancer cell line. *Pancreas* 2004; 4: 90–5.
- 20 Banerjee S, Zhang YX, Ali S, Bhuiyan M, Wang ZW, Chiao PJ, et al. Molecular evidence for increased antitumor activity of gemcitabine by genistein *in vitro* and *in vivo* using an orthotopic model of pancreatic cancer. *Cancer Res* 2005; 65: 9064–72.
- 21 O'Reilly EM. Pancreatic adenocarcinoma: new strategies for success. *Gastrointest Cancer Res* 2009; 3: S11–5.
- 22 Dimas K, Hatziantoniou S, Wyche JH, Pantazis P. A mastic gum extract induces suppression of growth of human colorectal tumor xenografts in immunodeficient mice. *In Vivo* 2009; 23: 63–8.
- 23 Baltimore D, Beg AA. DNA-binding proteins. A butterfly flutters by. *Nature* 1995; 373: 278–87.
- 24 Gilmore TD, Koedood M, Piffat KA, White DW. Rel/NF-kappaB/IkappaB proteins and cancer. *Oncogene* 1996; 13: 1367–78.
- 25 Boise LH, Gottschalk AR, Quintans J, Thompson CB. Bcl-2 and Bcl-2-related proteins in apoptosis regulation. *Curr Top Microbiol Immunol* 1995; 200: 107–21.
- 26 Korsmeyer SJ, Shutter JR, Veis DJ, Merry DE, Oltvai ZN. Bcl-2/Bax: a rheostat that regulates an anti-oxidant pathway and cell death. *Semin Cancer Biol* 1993; 4: 327–32.
- 27 Chao DT, Korsmeyer SJ. BCL-2 family: regulators of cell death. *Annu Rev Immunol* 1998; 16: 395–419.
- 28 Fahy BN, Schlieman MG, Mortenson MM, Virudachalam S, Bold RJ. Targeting BCL-2 overexpression in various human malignancies through NF-kB inhibition by the proteasome inhibitor bortezomib. *Cancer Chemother Pharmacol* 2005; 56: 46–54.
- 29 Jiang PH, Motoo Y, Sawabu N, Minamoto T. Effect of gemcitabine on the expression of apoptosis-related genes in human pancreatic cancer cells. *World J Gastroenterol* 2006; 12: 1597–602.
- 30 Johnson SK, Haun RS. Insulin-like growth factor binding protein-5 influences pancreatic cancer cell growth. *World J Gastroenterol* 2009; 15: 3355–66.