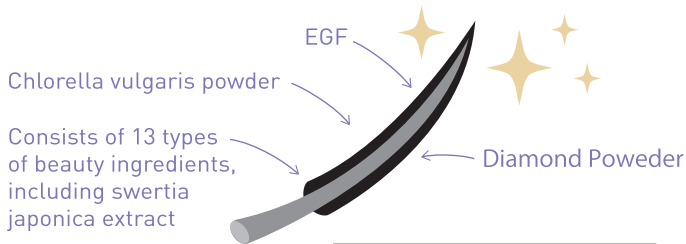


MASCARA FOR EYELASH

This serum mascara cares for and retains the beauty of eyelash extensions.



It gives you alimentionation.



A feeling of gloss

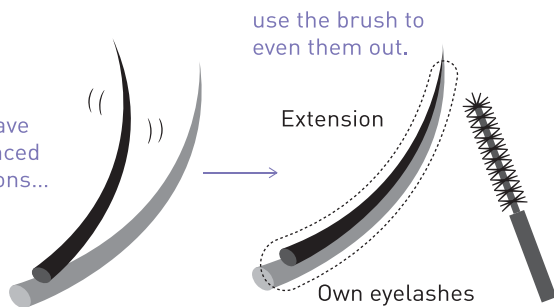
It consists of 13 types of beauty ingredients that care your eyelashes during application.

Some of them such as EGF, chlorellam, and swertia japonica extract can protect your eyelashes from any damage. It also contains a polymer with fine adhesiveness and elasticity. This polymer brings refinement to your eyelashes.

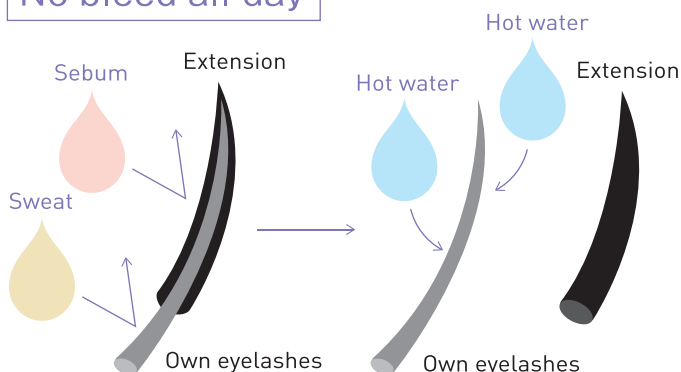
The special brush can adjust the balance of eyelash extensions.

The brush can balance extensions and maintain a beautiful curl all day. The brush can avoid clumps and set extensions right. Curl Lock Wax can maintain a beautiful curl all day.

If you have unbalanced extensions...



No bleed all day



It can be removed with warm water, and there is no need for scrubbing.

Our product will not come off due to sweat, sebum, and tears.

And it can be easily removed with warm water (around 40 degrees). There will be no friction from cleaning and no burden on your eyelash extensions. There will be no need to lower your eyelashes.